

Sierra Vista Unified School District

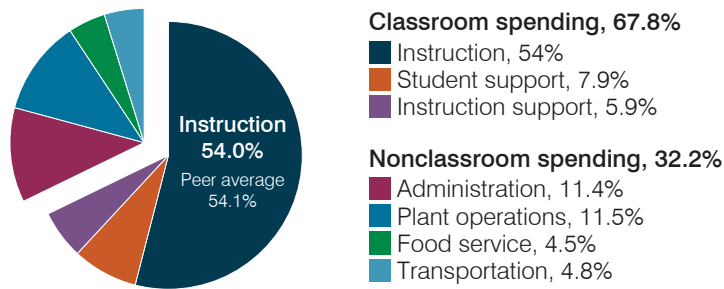
Cochise County
 Peer groups: Operational 3 and T-3, Achievement 3¹
 Legislative district(s): 14
 District location: City
 Number of schools: 8
 Graduation rate (2018): 91%

Students attending; Size: 5,335; Medium-large
 5-year change in students attending: 2% decrease
 Special education population: 12%
 English learner population: 2%
 Poverty rate (2018): 19%
 Free/reduced meal eligibility: 45%

Instructional spending percentage by year

2001	2002	2003	2004	2005	2006	2007	2008	2009	2010	2011	2012	2013	2014	2015	2016	2017	2018	2019
53.4	56.1	56.4	55.4	56.8	56.9	55.5	54.3	54.4	53.2	53.6	53.2	53.8	53.7	54.3	53.9	54.3	54.5	54.0

Spending by operational area



Operational measures relative to peer averages

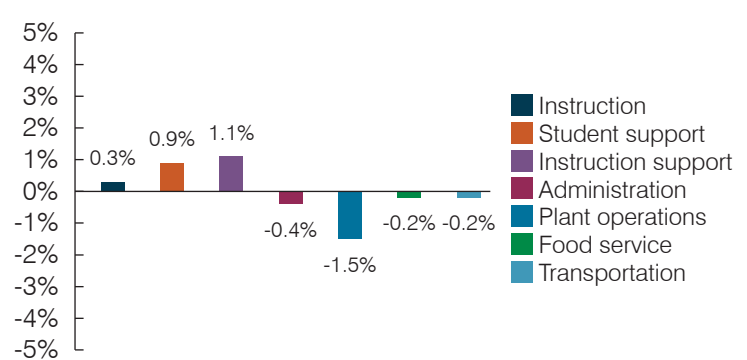
Operational area	Measure	District	Peer average	State average
Administration	Cost per pupil	\$926	\$887	\$903
	Students per administrative position	61	68	66
Plant operations	Cost per square foot	\$5.79	\$5.90	\$6.49
	Square footage per student	161	159	158
Food service	Cost per meal	\$3.36	\$3.35	\$3.08
Transportation	Cost per mile	\$3.42	\$4.60	\$4.29
	Cost per rider	\$1,048	\$1,224	\$1,424



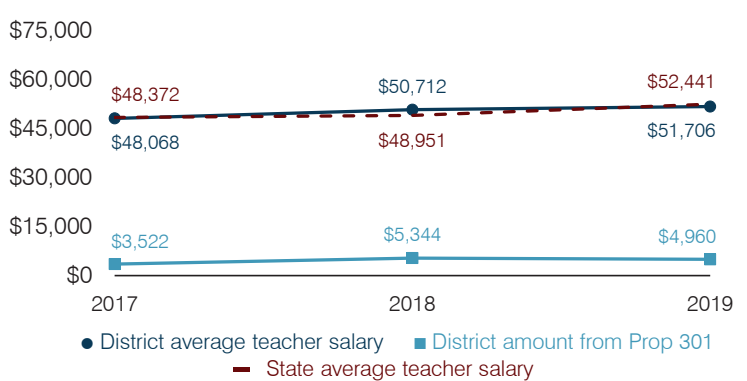
Per pupil spending

Spending by area	District		Peer average 2019	State average 2019
	2018	2019		
Instruction	\$ 4,181	\$ 4,385	\$ 4,496	\$ 4,869
Student support	612	642	730	754
Instruction support	467	481	377	497
Administration	847	926	887	903
Plant operations	863	930	977	1,027
Food service	347	365	353	438
Transportation	355	392	428	417
Total operational	7,672	8,121	8,248	8,905
Land and buildings	850	902	1,367	1,086
Equipment	1,134	568	508	496
Interest	78	129	319	261
Other	61	59	194	180
Total nonoperational	2,123	1,658	2,388	2,023
Total per pupil spending	\$ 9,795	\$ 9,779	\$10,636	\$10,928

Percentage point change in spending by operational area (fiscal year 2014 versus 2019)

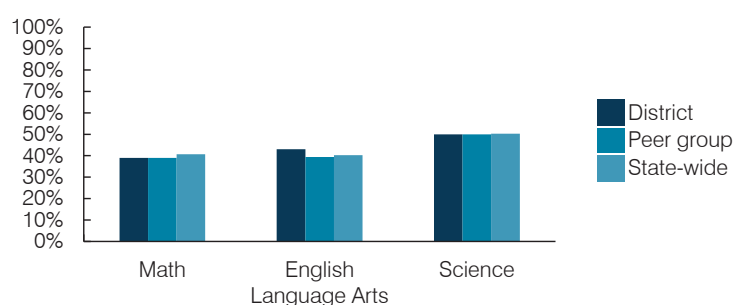


Average teacher salary and other measures



Measure	2017	2018	2019
Students per teacher	19.0	20.7	19.4
Average years of teacher experience	12.4	12.9	12.2
Percentage of teachers in first 3 years	8%	6%	10%

Students who passed State assessments²



¹ See Appendix A for information, such as districts included in each peer group, and Appendix B for sources and methodology.
² School letter grades are available at <https://azreportcards.azed.gov>.