

Sierra Vista Unified School District

Cochise County
Peer groups: Efficiency Group 4, Achievement Group 5
Legislative district(s): 30

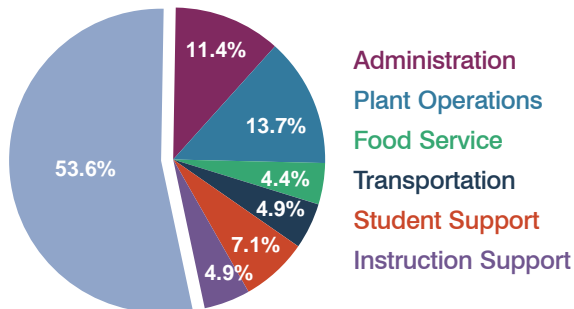
District size: Medium-Large
Students attending: 5,664
Number of schools: 8

OPERATIONAL EFFICIENCY

Spending by operational area

Classroom dollars

Nonclassroom dollars



5-year trend

Total spending per pupil increased by 10 percent. Spending in the classroom decreased significantly from 56.9 to 53.6 percent. Overall, spending on administration and plant operations increased, while spending on other nonclassroom areas remained fairly stable.

District's cost measures relative to peer group

Operational Area	Measure	District	Peer Average	State Average
Administration	Cost per pupil	\$786	\$736	\$728
	Students per administrator	64	65	66
Plant Operations	Cost per square foot	\$6.20	\$5.52	\$6.10
	Square footage per student	151	169	152
Food Service	Cost per meal equivalent	\$2.49	\$2.60	\$2.45
Transportation	Cost per mile	\$3.79	\$2.93	\$3.39
	Miles per rider	227	324	283

Very low Low Comparable High Very high

Per-pupil spending by operational area

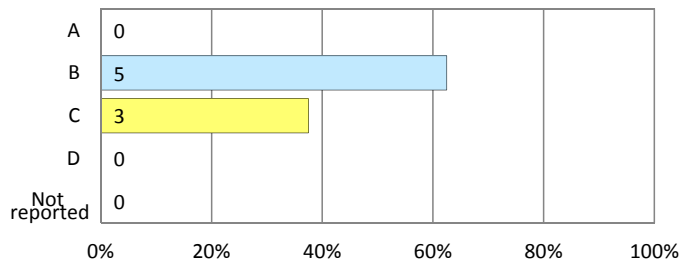
	District		Peer 2011	State 2011	National 2009
	2010	2011			
Total	\$7,151	\$6,864	\$7,026	\$7,485	\$10,591
Classroom dollars	\$3,804	\$3,678	\$3,783	\$4,098	\$6,456
Nonclassroom dollars:	\$3,347	\$3,186	\$3,243	\$3,387	\$4,135
Administration	782	786	736	728	1,147
Plant Operations	1,055	937	917	927	1,033
Food Service	318	299	351	375	404
Transportation	318	336	360	352	443
Student Support	517	490	528	571	573
Instruction Support	357	338	351	434	535

STUDENT ACHIEVEMENT AND TEACHER INFORMATION

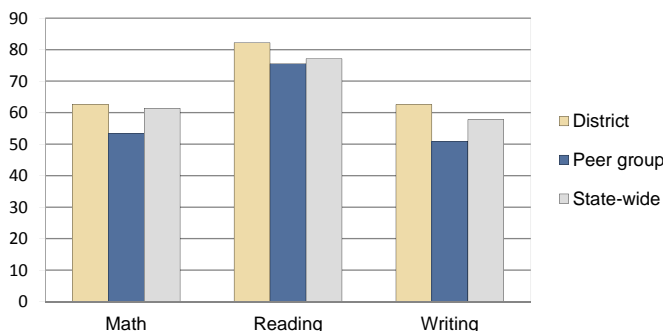
District and school letter grades

District grade: **B**

School grades (number and percentage):



Percentage of students meeting state standards (AIMS)



Student and teacher information

Measure	District	Peer Average	State Average
Attendance rate	94%	94%	95%
Graduation rate (2010)	86%	77%	78%
Poverty rate (2010)	15%	16%	22%
Students per teacher	19.2	15.1	18.1
Average teacher salary	\$44,507	\$39,479	\$45,637
Average years of experience	12.2	11.1	10.9
Percent of teachers in first 3 years	6%	21%	16%

Proposition 301 pay, goals, and results

Average additional salary earned by teachers: \$3,986

Type of goal	Goal met?
Student achievement	■
Dropout/graduation rates	-
Student attendance	-
Parent/student satisfaction	-
Teacher attendance	-
Teacher professional development	■
Teacher evaluations	-
Tutoring	-
Other	-

■ = yes, □ = no, ▬ = partially, and - = no goal set