

Sierra Vista Unified School District

Cochise County

Efficiency peer groups 3 and T-3, Achievement peer group 3

Legislative district(s): 14

District size, location:

Medium-large, City

Students attending¹:

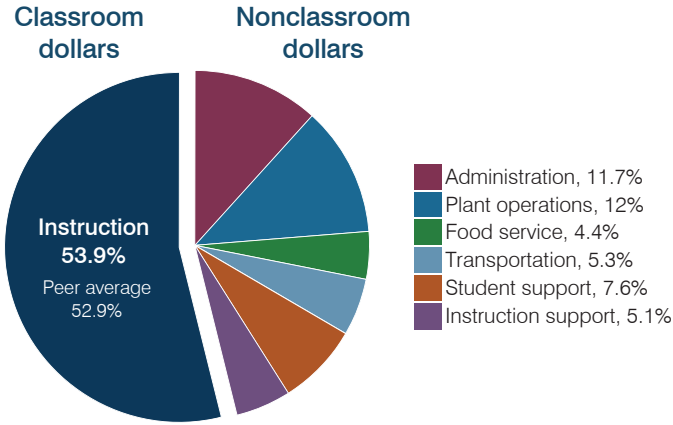
5,706

Number of schools:

8

OPERATIONAL EFFICIENCY

Spending by operational area



Efficiency measures relative to peer averages

Operational area	Measure	District	Peer average	State average
Administration	Cost per pupil	\$822	\$846	\$806
	Students per administrative position	66	69	67
Plant operations	Cost per square foot	\$5.66	\$5.78	\$6.10
	Square footage per student	150	163	154
Food service	Cost per meal	\$2.94	\$2.98	\$2.81
Transportation	Cost per mile	\$3.59	\$3.92	\$3.72
	Cost per rider	\$874	\$970	\$1,092

Per pupil spending

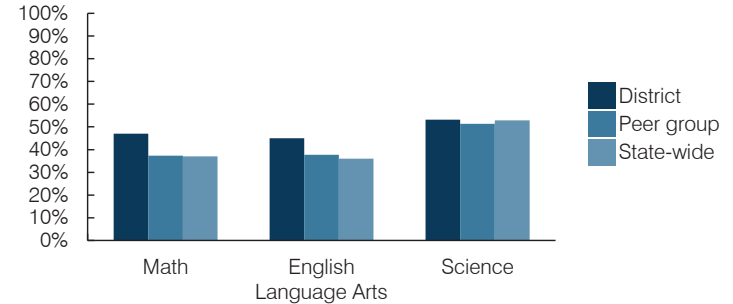
Spending by area	District		Peer average 2016	State average 2016
	2015	2016		
Instruction	\$ 3,751	\$ 3,803	\$ 3,774	\$ 4,145
Administration	771	822	846	806
Plant operations	862	849	923	939
Food service	317	309	314	415
Transportation	356	376	382	364
Student support	478	539	605	633
Instruction support	368	359	296	444
Total operational	\$ 6,903	\$ 7,057	\$ 7,140	\$ 7,746
Land and buildings	\$ 73	\$ 91	\$ 704	\$ 621
Equipment	294	178	259	400
Interest	2	2	191	216
Other	62	67	164	153
Total nonoperational	\$ 431	\$ 338	\$ 1,318	\$ 1,390
Total per pupil spending	\$ 7,334	\$ 7,395	\$ 8,458	\$ 9,136

STUDENT AND TEACHER MEASURES, FINANCIAL ASSESSMENT, AND REVENUES

Student and teacher measures

Measure	District	Peer average	State average
Attendance rate (2015)	94%	94%	94%
Graduation rate (2015)	88%	84%	78%
Poverty rate (2015)	19%	24%	23%
Students per teacher	19.7	19.0	18.6
Average teacher salary	\$46,090	\$44,998	\$46,384
Amount from Proposition 301	\$3,214	\$5,064	\$5,315
Average years of teacher experience	12.4	11.6	11.0
Percentage of teachers in first 3 years	10%	17%	20%

Students who passed state assessments



Financial stress assessment

Overall financial stress level: **Low**

Measure: 2014 through 2016

Measure	Assessment
Change in number of district students	Increase
Spending exceeded operating/capital budgets	No overspending
Spending increase election results	Voter-approved
Operating reserve percentage, Trend	4.8%, Increasing
Years of capital reserve held	1 to 3 years
Current financial and internal control status	Compliant

Low Moderate High

Per pupil revenues

Revenues by source	District		Peer average 2016	State average 2016
	2015	2016		
Federal	\$ 755	\$ 816	\$ 823	\$ 1,301
State	2,856	3,412	3,055	3,780
Local	3,705	3,524	4,806	4,268
Total revenues per pupil	\$ 7,316	\$ 7,752	\$ 8,684	\$ 9,349

Select revenues from common sources

Source	District 2015	District 2016	Peer average 2016	State average 2016
Equalization formula funding	\$ 5,177	\$ 5,191	\$ 5,498	\$ 5,471
Grants	711	732	891	1,182
Donations and tax credits	52	62	135	86

Select revenues from less common sources

Source	District 2015	District 2016	Number of peers receiving
Desegregation	\$ 0	\$ 0	1 of 15
Small school adjustment	0	0	0 of 15
Federal impact aid	53	96	3 of 15
Voter-approved levy increases	0	0	14 of 15

¹ District is working with the Arizona Department of Education to resolve student count discrepancy. See Appendix B, page b-5.

Classroom dollar percentage

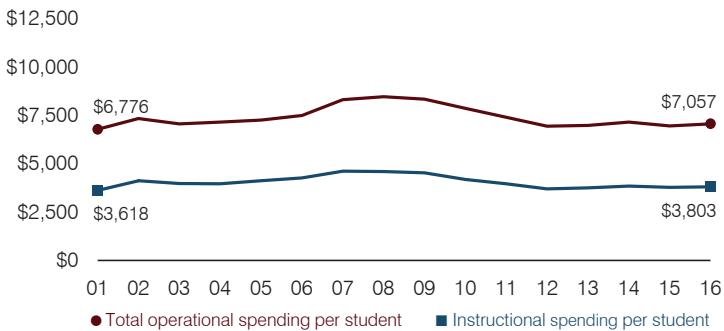
Year:	2001	2002	2003	2004	2005	2006	2007	2008	2009	2010	2011	2012	2013	2014	2015	2016
Percentage:	53.4	56.1	56.4	55.4	56.8	56.9	55.5	54.3	54.4	53.2	53.6	53.2	53.8	53.7	54.3	53.9

OPERATIONAL TRENDS
Fiscal years as indicated

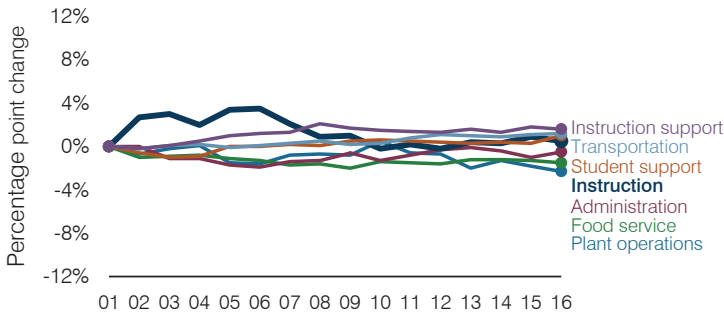
5-year spending trend (2011 through 2016)

Total operational spending per pupil, adjusted for inflation, decreased by 5 percent. The percentage of dollars spent in the classroom increased slightly overall from 53.6 to 53.9 percent. Overall, as a percentage of total operational spending, plant operations decreased, while student support increased slightly. Other nonclassroom areas remained fairly stable.

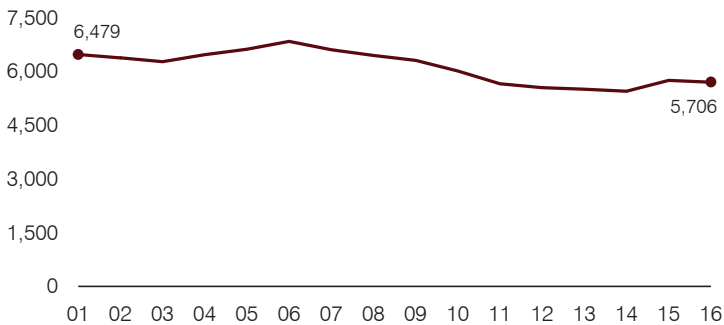
Total operational and instructional spending per pupil (inflation adjusted to 2016 dollars)



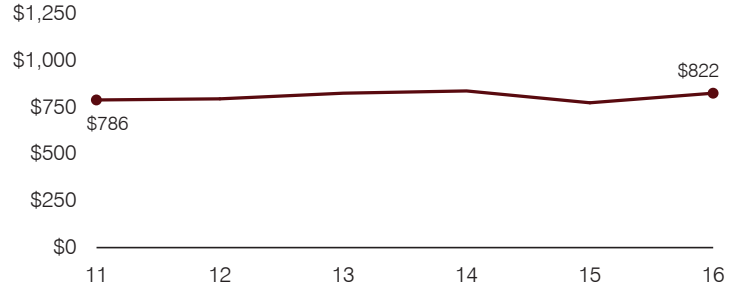
Changes in operational spending percentages



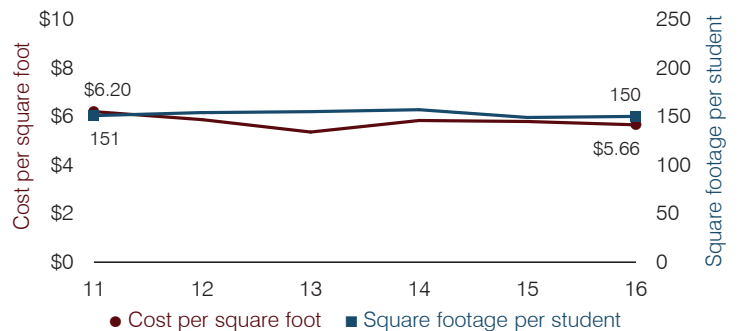
Students attending



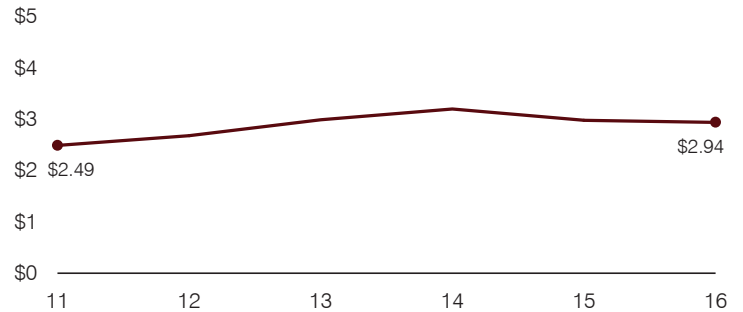
Administrative cost per pupil



Plant cost per square foot and square footage per student



Food service cost per meal



Transportation costs per mile and per rider

