

Sierra Vista Unified School District

Cochise County

Efficiency peer groups 3 and T-3, Achievement peer group 3¹

Legislative district(s): 14

District size, location:

Medium-large, City

Students attending:

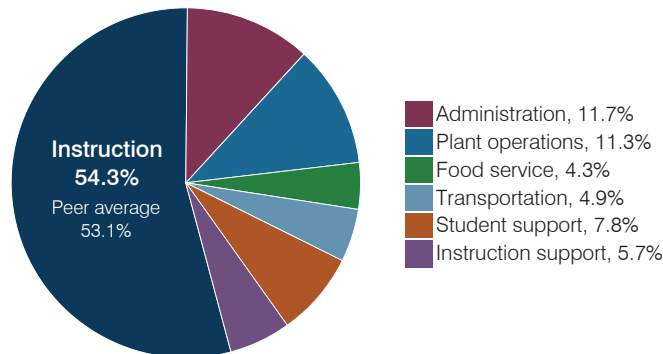
5,630

Number of schools:

8

OPERATIONAL EFFICIENCY

Spending by operational area



Efficiency measures relative to peer averages

Operational area	Measure	District	Peer average	State average
Administration	Cost per pupil	\$904	\$837	\$844
	Students per administrative position	63	69	67
Plant operations	Cost per square foot	\$5.74	\$6.01	\$6.30
	Square footage per student	152	157	155
Food service	Cost per meal	\$3.13	\$3.04	\$2.88
Transportation	Cost per mile	\$3.32	\$4.28	\$3.84
	Cost per rider	\$1,060	\$1,207	\$1,198

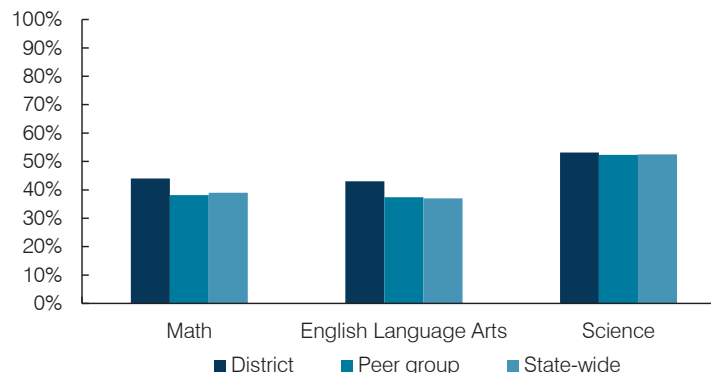
Very low Low Comparable High Very high

Per pupil spending

Spending by area	District		Peer average 2017	State average 2017
	2016	2017		
Instruction	\$ 3,803	\$ 4,184	\$ 3,991	\$ 4,377
Administration	822	904	837	844
Plant operations	849	873	965	977
Food service	309	331	324	422
Transportation	376	380	433	381
Student support	539	601	640	679
Instruction support	359	436	338	461
Total operational	\$ 7,057	\$ 7,709	\$ 7,528	\$ 8,141
Land and buildings	\$ 91	\$ 119	\$ 890	\$ 691
Equipment	178	427	406	424
Interest	2	2	258	236
Other	67	73	146	161
Total nonoperational	\$ 338	\$ 621	\$ 1,700	\$ 1,512
Total per pupil spending	\$ 7,395	\$ 8,330	\$ 9,228	\$ 9,653

STUDENT ACHIEVEMENT, STUDENT AND TEACHER MEASURES, AND REVENUES

Students who passed state assessments



Student and teacher measures

Measure	District	Peer average	State average
Attendance rate	94%	94%	94%
Graduation rate (2016)	88%	86%	80%
Poverty rate (2016)	29%	24%	22%
Special education population	12%	14%	12%
Students per teacher	19.0	18.8	18.5
Average teacher salary	\$48,068	\$45,975	\$48,372
Amount from Prop 301	\$3,522	\$5,671	\$5,840
Average years of teacher experience	12.4	11.8	11.3
Percentage of teachers in first 3 years	8%	16%	19%

Per pupil revenues

Revenues by source	District		Peer average 2017	State average 2017
	2016	2017		
Federal	\$ 816	\$ 812	\$ 781	\$ 1,318
State	3,412	3,329	3,243	3,831
Local	3,524	3,385	5,097	4,443
Total per pupil revenues	\$ 7,752	\$ 7,526	\$ 9,121	\$ 9,592

Select revenues from common sources

	District 2016	District 2017	Peer average 2017	State average 2017
Equalization formula funding	\$ 5,191	\$ 5,287	\$ 5,442	\$ 5,503
Amount from Prop 123	227	231	240	245
Prop 123 additional funding	47	48	47	46
Grants	732	762	866	1,185
Donations and tax credits	62	60	157	89

Select revenues from less common sources

	District 2016	District 2017	Number of peers receiving
Desegregation	\$ 0	\$ 0	1 of 15
Small school adjustment	0	0	0 of 15
Federal impact aid	96	92	3 of 15
Voter-approved levy increases	0	0	13 of 15

¹ See Appendix A for information such as districts included in each peer group and Appendix B for sources and methodology.

Instructional spending percentage

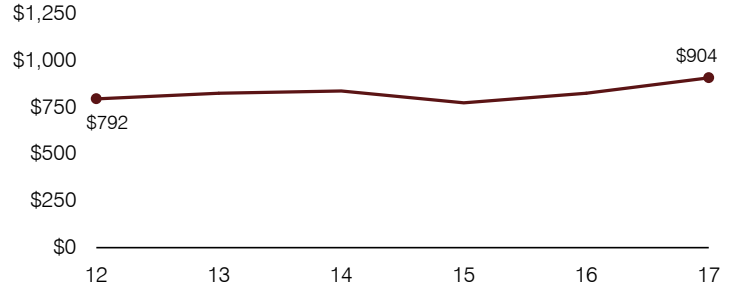
Year:	2001	2002	2003	2004	2005	2006	2007	2008	2009	2010	2011	2012	2013	2014	2015	2016	2017
Percentage:	53.4	56.1	56.4	55.4	56.8	56.9	55.5	54.3	54.4	53.2	53.6	53.2	53.8	53.7	54.3	53.9	54.3

OPERATIONAL TRENDS AND FINANCIAL STRESS ASSESSMENT
Fiscal years as indicated

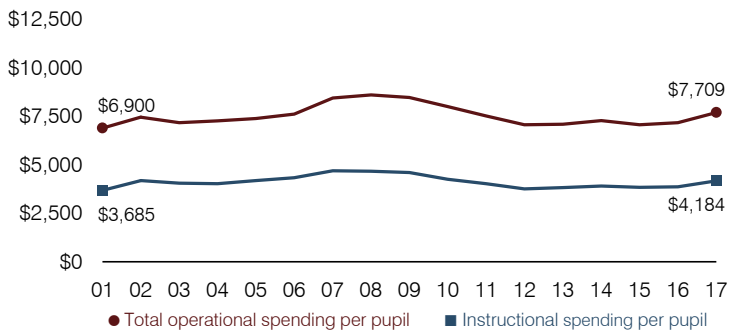
5-year spending trend (2012 through 2017)

Total operational spending per pupil, adjusted for inflation, increased by 9 percent. The percentage of dollars spent on instruction increased overall from 53.2 to 54.3 percent. Overall, as a percentage of total operational spending, plant operations decreased substantially, while student support and instruction support increased slightly. Most other noninstructional areas remained stable.

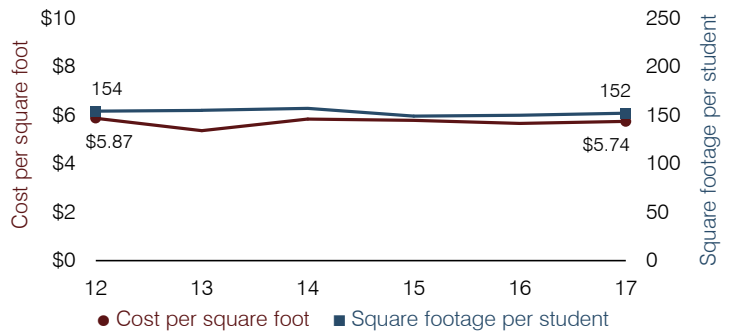
Administrative cost per pupil



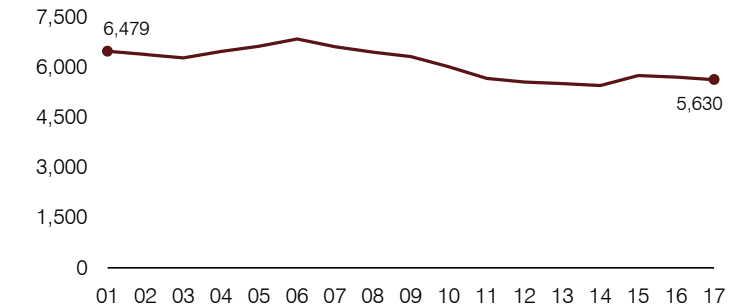
Total operational and instructional spending per pupil (inflation adjusted to 2017 dollars)



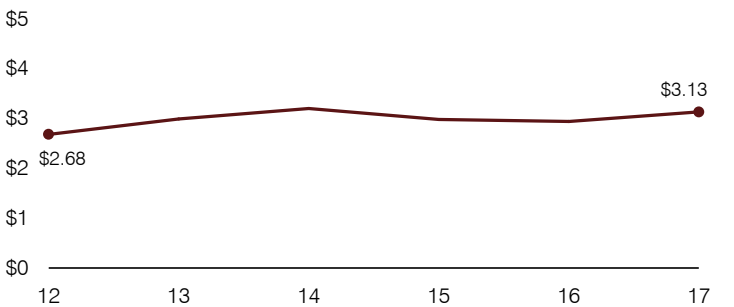
Plant cost per square foot and square footage per student



Students attending



Food service cost per meal



Financial stress assessment

Overall financial stress level: **Low**

Measure: 2015 through 2017

	Assessment
Change in number of district students	Steady
Spending exceeded operating/capital budgets	Isolated
Spending increase election results	Voter-approved
Operating reserve percentage, Trend	3.8%, Varying
Years of capital reserve held	1 to 3 years
Current financial and internal control status	Compliant

Low
Moderate
High

Transportation costs per mile and per rider

