

# Sierra Vista Unified School District

Cochise County  
Operational peer group: D  
Legislative districts: 30

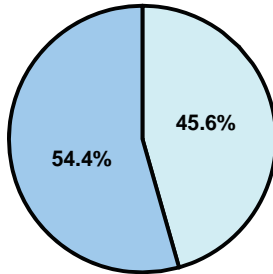
District size: Medium-Large  
Students attending: 6,316  
Number of schools: 9

## OPERATIONAL EFFICIENCY

### Average per-pupil spending

District  
State

**Classroom**  
\$4,079  
\$4,497



**Nonclassroom**  
\$3,426  
\$3,411

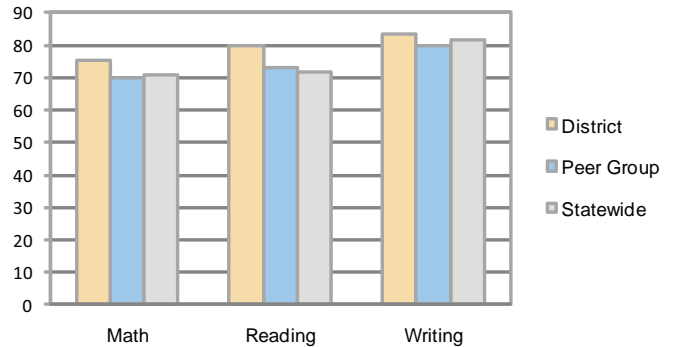
**Total**  
\$7,505  
\$7,908

### 5-year trend

Total spending per pupil increased by 34 percent. Spending in the classroom varied year to year and decreased overall from 55.4 to 54.4 percent. Spending on student and instruction support increased, spending on plant operations and food service decreased, and spending in other nonclassroom areas remained fairly stable.

## STUDENT ACHIEVEMENT AND TEACHER INFORMATION

### Percentage of students meeting state standards (AIMS)



### Adequate Yearly Progress (AYP) toward federal goals

8 schools met all applicable AYP objectives for NCLB. 1 did not because some students did not demonstrate sufficient academic progress.

### Student and teacher information

Measure	District	Peer average	State average
Attendance rate	96%	94%	95%
Graduation rate (2008)	82%	73%	75%
Poverty rate	14%	15%	19%
Student/teacher ratio	17.6	17.2	17.1
Average teacher salary	\$46,054	\$42,175	\$45,209
Average years' experience	11.8	8.4	8.3
Percent of teachers in first 3 years	13%	34%	16%

### District's cost measures relative to peer group

Operational Area	Measure	District	Peer Average	State Average
Administration	Cost per pupil	\$872	\$775	\$729
	Students per administrator	58	61	66
Plant Operations	Cost per square foot	\$7.47	\$6.13	\$6.40
	Square footage per student	136	168	144
Food Service	Cost per meal equivalent	\$2.52	\$2.64	\$2.53
Transportation	Cost per mile	\$4.04	\$2.96	\$3.36
	Miles per rider	205	307	271

Very Low   Low   Comparable   High   Very High

### Per-pupil spending by function

	District		Peer	State	National
	2008	2009	2009	2009	2007
<b>Total</b>	<b>\$7,516</b>	<b>\$7,505</b>	<b>\$7,896</b>	<b>\$7,908</b>	<b>\$9,683</b>
<b>Classroom dollars</b>	<b>\$4,077</b>	<b>\$4,079</b>	<b>\$4,312</b>	<b>\$4,497</b>	<b>\$5,903</b>
<b>Nonclassroom dollars:</b>	<b>\$3,439</b>	<b>\$3,426</b>	<b>\$3,584</b>	<b>\$3,411</b>	<b>\$3,780</b>
Administration	820	872	775	729	1,050
Plant Operations	1,021	1,012	1,032	920	951
Food Service	320	289	365	382	369
Transportation	347	326	397	343	406
Student Support	505	533	629	594	512
Instruction Support	426	394	380	431	470
Other	0	0	6	12	22

### Proposition 301

#### Teacher pay

On average, each teacher earned \$5,317 in additional salary, and each librarian, counselor, behavioral specialist, reading specialist, teacher on assignment, and athletic trainer earned between \$790 and \$5,988.

#### Performance pay plan goals and results

Type of goal	Goal met?
Student achievement	■
Dropout/ graduation rates	
Student attendance	
Parent/student satisfaction	
Teacher attendance	
Teacher professional development	■
Teacher evaluations	
Tutoring	
Other	

■ = yes, □ = no, and ▴ = partially