

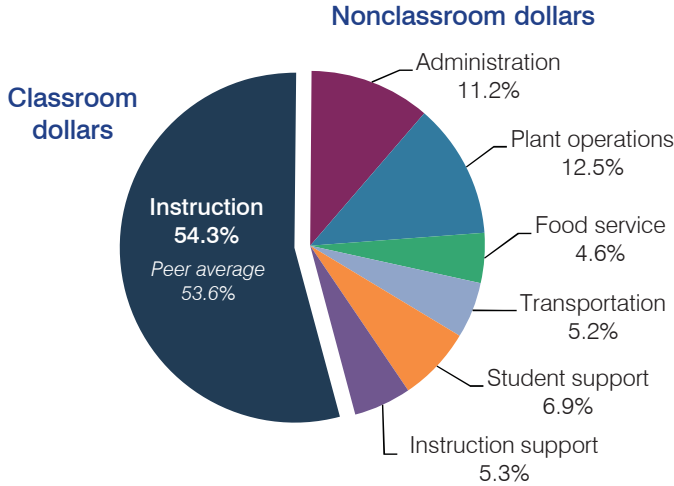
Sierra Vista Unified School District

Cochise County
 Efficiency peer groups 3 and T-3, Achievement peer group 3
 Legislative district(s): 14

District size, location: Medium-large, City
 Students attending: 5,755
 Number of schools: 8

OPERATIONAL EFFICIENCY

Spending by operational area



Efficiency measures relative to peer averages

Operational area	Measure	District	Peer average	State average
Administration	Cost per pupil	\$771	\$780	\$780
	Students per administrative position	65	68	67
Plant operations	Cost per square foot	\$5.79	\$5.87	\$6.09
	Square footage per student	149	160	153
Food service	Cost per meal equivalent	\$2.98	\$2.92	\$2.79
Transportation	Cost per mile	\$3.25	\$3.90	\$3.66
	Cost per rider	\$810	\$957	\$1,071

Very low Low Comparable High Very high

Per pupil spending

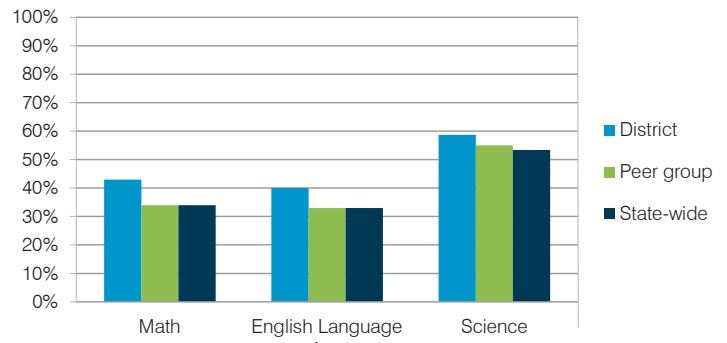
Spending by area	District		Peer average	State average
	2014	2015	2015	2015
Instruction	\$ 3,787	\$ 3,751	\$ 3,812	\$ 4,105
Administration	834	771	780	780
Plant operations	918	862	928	930
Food service	330	317	322	417
Transportation	355	356	412	371
Student support	493	478	553	613
Instruction support	338	368	304	442
Total operational	\$ 7,055	\$ 6,903	\$ 7,111	\$ 7,658
Land and buildings	\$ 108	\$ 73	\$ 676	\$ 641
Equipment	334	294	499	383
Interest	7	2	225	225
Other	58	62	145	150
Total nonoperational	\$ 507	\$ 431	\$ 1,545	\$ 1,399
Total per pupil spending	\$ 7,562	\$ 7,334	\$ 8,656	\$ 9,057

STUDENT AND TEACHER MEASURES, FINANCIAL ASSESSMENT, AND REVENUE

Student and teacher measures

Measure	District	Peer average	State average
Attendance rate	94%	94%	94%
Graduation rate (2014)	86%	81%	76%
Poverty rate (2014)	19%	22%	23%
Students per teacher	20.8	18.8	18.6
Average teacher salary	\$46,710	\$44,582	\$46,008
Average years of teacher experience	12.3	11.7	11.0
Percentage of teachers in first 3 years	11%	18%	20%

Students who met state standards



Financial stress assessment

Overall financial stress level: **Low**

Measure: 2013 through 2015	Assessment
Change in number of district students	Increase
Spending exceeded operating/capital budgets	No overspending
Spending increase election results	No election held
Operating reserve percentage (max. 4%), trend	3.9%, Steady
Years of capital reserve held	1 to 3 years
Current financial and internal control status	Compliant

Low Moderate High

Per pupil revenues

Revenues by source	District		Peer average	State average
	2014	2015	2015	2015
Federal	\$ 798	\$ 755	\$ 771	\$ 1,299
State	2,641	2,856	2,873	3,517
Local	3,958	3,705	4,889	4,248
Total revenues per pupil	\$ 7,397	\$ 7,316	\$ 8,533	\$ 9,064
Select revenues from common sources				
Equalization formula funding	\$ 5,536	\$ 5,177	\$ 5,412	\$ 5,303
Grants	701	711	798	1,167
Donations and tax credits	53	52	127	78
Select revenues from less common sources				
Desegregation	\$ 0	\$ 0	1 of 15	
Small school adjustment	0	0	0 of 15	
Federal impact aid	109	53	3 of 15	
Voter-approved levy increases	0	0	14 of 15	

Sierra Vista USD—page 2

Classroom dollar percentage

Year:	2001	2002	2003	2004	2005	2006	2007	2008	2009	2010	2011	2012	2013	2014	2015
Percentage:	53.4	56.1	56.4	55.4	56.8	56.9	55.5	54.3	54.4	53.2	53.6	53.2	53.8	53.7	54.3

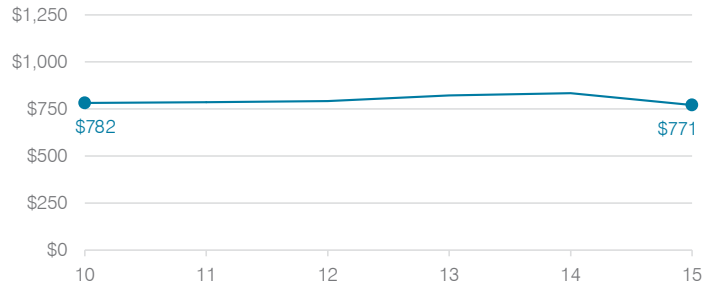
OPERATIONAL TRENDS

Fiscal years as indicated

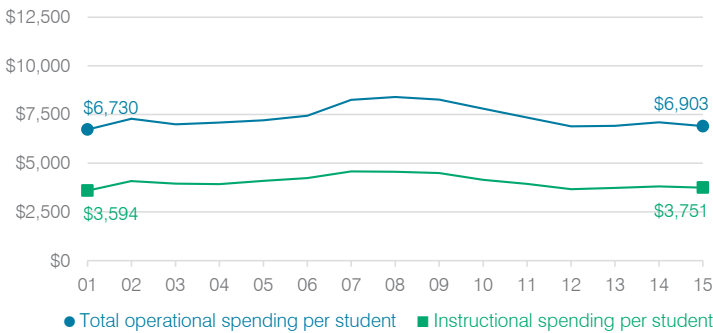
5-year spending trend (2010 through 2015)

Total operational spending per pupil, adjusted for inflation, decreased by 12 percent. The percentage of dollars spent in the classroom increased overall from 53.2 to 54.3 percent. As a percentage of total operational spending, plant operations decreased substantially, transportation increased slightly, and other nonclassroom areas remained fairly stable.

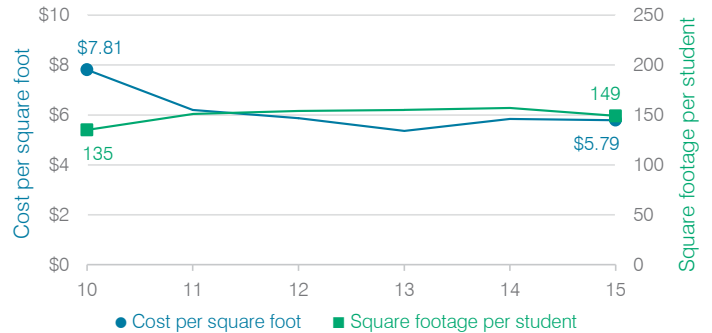
Administrative cost per student



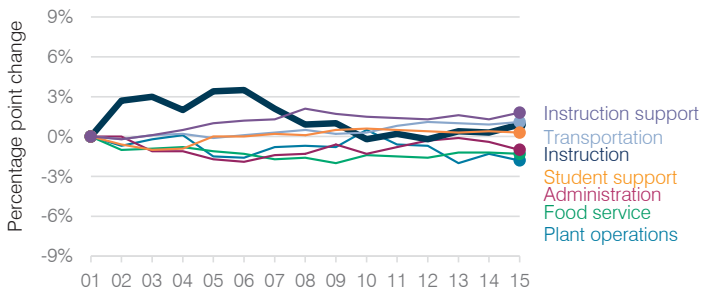
Total operational and instructional spending per student (inflation adjusted to 2015 dollars)



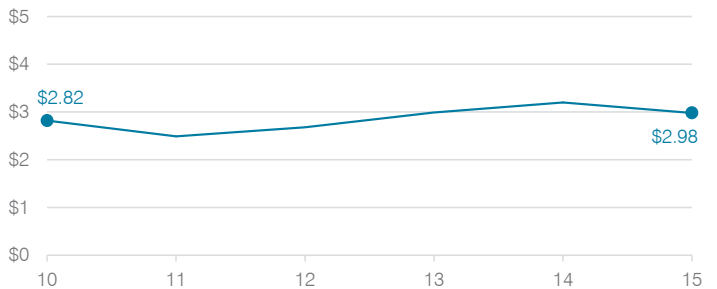
Plant cost per square foot and square footage per student



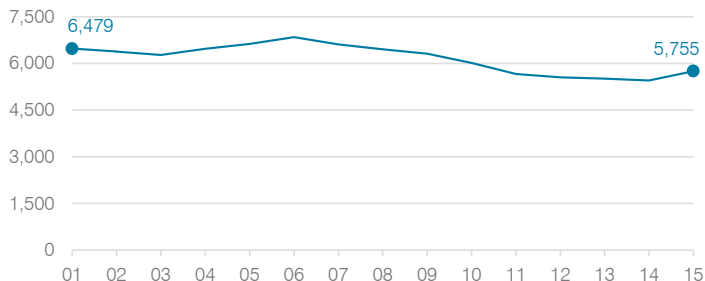
Changes in operational spending percentages



Food service cost per meal



Students attending



Transportation costs per mile and per rider

