

Snowflake Unified School District

Navajo County
Operational peer group: D
Legislative districts: 5

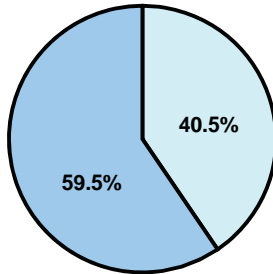
District size: Medium-Large
Students attending: 2,406
Number of schools: 6

OPERATIONAL EFFICIENCY

Average per-pupil spending

District
State

Classroom
\$4,312
\$4,497



Nonclassroom
\$2,940
\$3,411

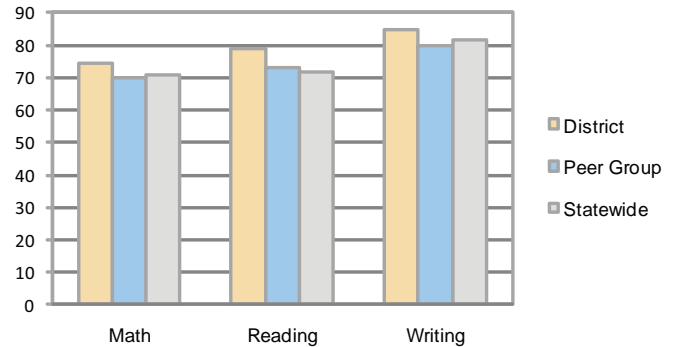
Total
\$7,252
\$7,908

5-year trend

Total spending per pupil increased by 27 percent. Spending in the classroom increased significantly from 57.3 to 59.5 percent. Spending on administration and plant operations decreased significantly, while spending in other nonclassroom areas remained fairly stable.

STUDENT ACHIEVEMENT AND TEACHER INFORMATION

Percentage of students meeting state standards (AIMS)



Adequate Yearly Progress (AYP) toward federal goals

6 schools met all applicable AYP objectives for NCLB.

District's cost measures relative to peer group

Operational Area	Measure	District	Peer Average	State Average
Administration	Cost per pupil	\$515	\$775	\$729
	Students per administrator	52	61	66
Plant Operations	Cost per square foot	\$4.73	\$6.13	\$6.40
	Square footage per student	171	168	144
Food Service	Cost per meal equivalent	\$2.99	\$2.64	\$2.53
Transportation	Cost per mile	\$3.41	\$2.96	\$3.36
	Miles per rider	355	307	271

Very Low Low Comparable High Very High

Student and teacher information

Measure	District	Peer average	State average
Attendance rate	93%	94%	95%
Graduation rate (2008)	83%	73%	75%
Poverty rate	16%	15%	19%
Student/teacher ratio	19.5	17.2	17.1
Average teacher salary	\$45,042	\$42,175	\$45,209
Average years' experience	13.8	8.4	8.3
Percent of teachers in first 3 years	13%	34%	16%

Proposition 301

Teacher pay

On average, each teacher, librarian, and counselor earned between \$7,241 and \$8,670 in additional salary.

Per-pupil spending by function

	District		Peer	State	National
	2008	2009	2009	2009	2007
Total	\$7,142	\$7,252	\$7,896	\$7,908	\$9,683
Classroom dollars	\$4,257	\$4,312	\$4,312	\$4,497	\$5,903
Nonclassroom dollars:	\$2,885	\$2,940	\$3,584	\$3,411	\$3,780
Administration	485	515	775	729	1,050
Plant Operations	904	812	1,032	920	951
Food Service	290	296	365	382	369
Transportation	432	444	397	343	406
Student Support	595	630	629	594	512
Instruction Support	179	243	380	431	470
Other	0	0	6	12	22

Performance pay plan goals and results

Type of goal	Goal met?
Student achievement	■
Dropout/ graduation rates	
Student attendance	
Parent/student satisfaction	
Teacher attendance	
Teacher professional development	
Teacher evaluations	
Tutoring	
Other	

■ = yes, □ = no, and ▴ = partially