

Solomon Elementary School District

Graham County

District size, location:

Very small, Town

Efficiency peer groups 11 and T-11, Achievement peer group 17¹

Students attending:

182

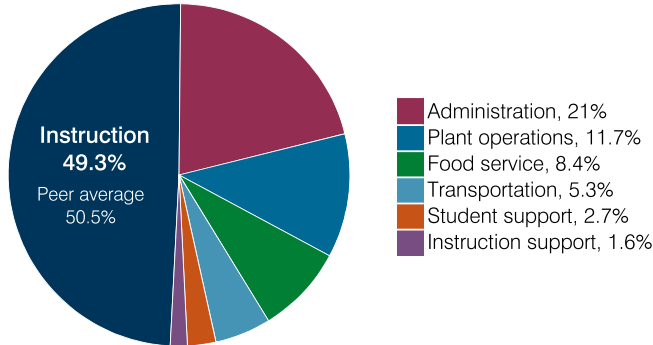
Legislative district(s): 14

Number of schools:

1

OPERATIONAL EFFICIENCY

Spending by operational area



Efficiency measures relative to peer averages

Operational area	Measure	District	Peer average	State average
Administration	Cost per pupil	\$1,942	\$3,064	\$860
	Students per administrative position	47	33	66
Plant operations	Cost per square foot	\$4.45	\$7.31	\$6.34
	Square footage per student	244	371	156
Food service	Cost per meal	\$3.79	\$5.79	\$3.02
Transportation	Cost per mile	\$2.42	\$1.94	\$4.05
	Cost per rider	NR	\$1,614	\$1,301

Per pupil spending

Spending by area	District		Peer average 2018	State average 2018
	2017	2018		
Instruction	\$ 4,723	\$ 4,562	\$ 8,493	\$ 4,480
Administration	2,034	1,942	3,064	860
Plant operations	874	1,085	2,439	988
Food service	771	774	932	425
Transportation	461	486	973	388
Student support	308	251	656	693
Instruction support	282	155	400	462
Total operational	9,453	9,255	16,957	8,296
Land and buildings	1,160	2,526	965	827
Equipment	827	287	562	409
Interest	0	0	25	228
Other	8	1	88	169
Total nonoperational	1,995	2,814	1,640	1,633
Total per pupil spending	\$ 11,448	\$ 12,069	\$ 18,597	\$ 9,929

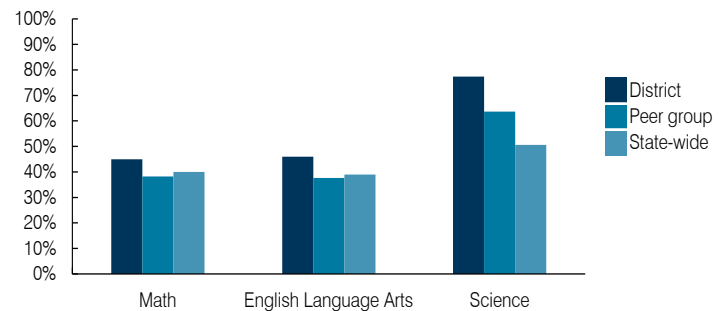
¹ See Appendix A for information such as districts included in each peer group and Appendix B for sources and methodology.

STUDENT ACHIEVEMENT, STUDENT AND TEACHER MEASURES, AND REVENUES

ADE-assigned school letter grades

Grade	Number of schools	Percentage of schools
A	0	0%
B	1	100%
C	0	0%
D	0	0%
F	0	0%

Students who passed State assessments



Student and teacher measures

Measure	District	Peer average	State average
Attendance rate	94%	94%	94%
Graduation rate (2017)	N/A	N/A	N/A
Poverty rate (2017)	16%	19%	19%
Special education population	8%	13%	12%
Students per teacher	20.9	14.1	18.4
Average teacher salary	\$46,904	\$50,510	\$48,951
Amount from Prop 301	\$5,017	\$5,096	\$6,411
Average years of teacher experience	15.7	13.8	11.4
Percentage of teachers in first 3 years	0%	9%	19%

Per pupil revenues

Revenues by source	District		Peer average 2018	State average 2018
	2017	2018		
Federal	\$ 1,575	\$ 1,331	\$ 3,021	\$ 1,317
State	6,062	9,801	4,788	4,011
Local	2,387	2,635	12,812	4,592
Total per pupil revenues	\$ 10,024	\$ 13,767	\$ 20,621	\$ 9,920

Select revenues from common sources

Equalization formula funding	\$ 6,738	\$ 7,027	\$ 8,282	\$ 5,585
Grants	1,767	5,010	3,020	1,241
Donations and tax credits	50	41	125	90

Select revenues from less common sources

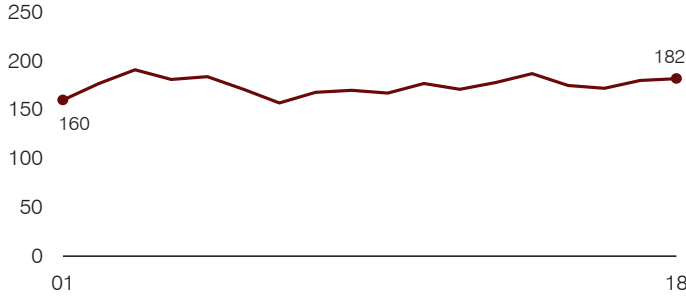
			Number of peers receiving
Desegregation	\$ 0	\$ 0	0 of 56
Small school adjustment	0	0	45 of 56
Federal impact aid	0	0	5 of 56
Voter-approved levy increases	0	0	5 of 56

Instructional spending percentage

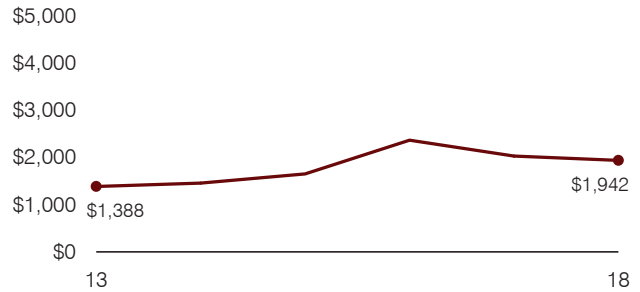
Year: 2001 2002 2003 2004 2005 2006 2007 2008 2009 2010 2011 2012 2013 2014 2015 2016 2017 2018
 Percentage: 49.0 52.1 54.5 50.9 55.1 54.1 55.3 53.8 51.6 52.9 54.1 52.3 53.3 52.8 51.2 45.6 50.0 49.3

TRENDS AND FINANCIAL STRESS ASSESSMENT
 Fiscal years as indicated

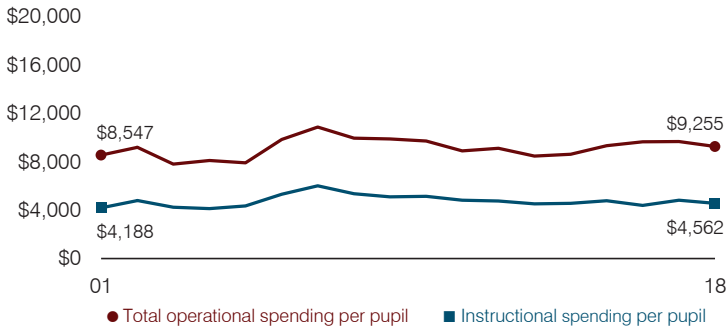
Students attending



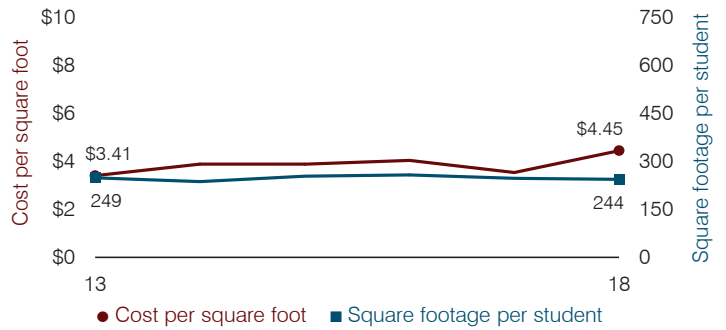
Administrative cost per pupil



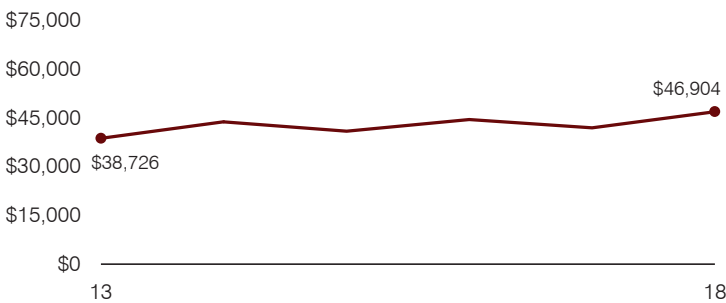
Total operational and instructional spending per pupil (inflation adjusted to 2018 dollars)



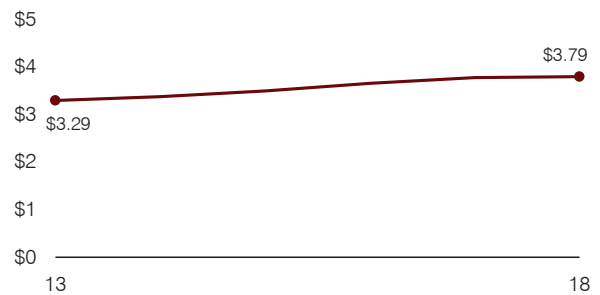
Plant cost per square foot and square footage per student



Average teacher salary



Food service cost per meal



Financial stress assessment

Overall financial stress level: **Low**

Measure: 2016 through 2018	Assessment
Change in number of district students	Increase
Spending exceeded operating/capital budgets	No overspending
Spending increase election results	No election held
Operating reserve percentage, Trend	5.9%, Varying
Years of capital reserve held	More than 3 years
Current financial and internal control status	Compliant

Low
Moderate
High

Transportation costs per mile and per rider

