

Solomon Elementary School District

Graham County
Operational peer group: L
Legislative districts: 5

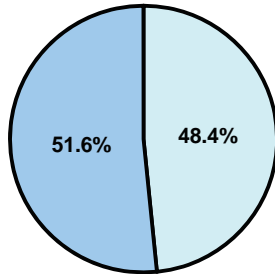
District size: Very Small
Students attending: 170
Number of schools: 1

OPERATIONAL EFFICIENCY

Average per-pupil spending

District
State

Classroom
\$4,406
\$4,497



Nonclassroom
\$4,134
\$3,411

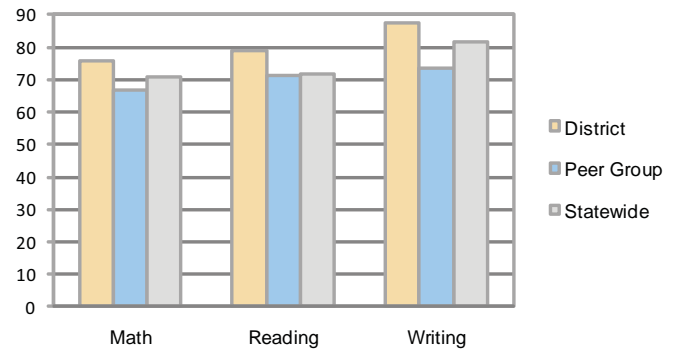
Total
\$8,540
\$7,908

5-year trend

Total spending per pupil increased by 40 percent. Spending in the classroom varied year to year and increased overall from 50.9 to 51.6 percent. Spending on administration decreased, spending on plant operations increased, and spending in other nonclassroom areas varied year to year.

STUDENT ACHIEVEMENT AND TEACHER INFORMATION

Percentage of students meeting state standards (AIMS)



Adequate Yearly Progress (AYP) toward federal goals

The District's school met all applicable AYP objectives for NCLB.

Student and teacher information

Measure	District	Peer average	State average
Attendance rate	96%	94%	95%
Graduation rate (2008)	N/A	54%	75%
Poverty rate	21%	31%	19%
Student/teacher ratio	15.5	10.8	17.1
Average teacher salary	\$41,738	\$45,165	\$45,209
Average years' experience	9.6	12.7	8.3
Percent of teachers in first 3 years	28%	15%	16%

District's cost measures relative to peer group

Operational Area	Measure	District	Peer Average	State Average
Administration	Cost per pupil	\$1,298	\$2,656	\$729
	Students per administrator	55	32	66
Plant Operations	Cost per square foot	\$2.57	\$7.53	\$6.40
	Square footage per student	503	318	144
Food Service	Cost per meal equivalent	\$3.09	\$5.10	\$2.53
Transportation	Cost per mile	\$1.60	\$1.79	\$3.36
	Miles per rider	210	710	271

Very Low Low Comparable High Very High

Per-pupil spending by function

	District		Peer 2009	State 2009	National 2007
	2008	2009			
Total	\$8,490	\$8,540	\$16,311	\$7,908	\$9,683
Classroom dollars	\$4,563	\$4,406	\$8,757	\$4,497	\$5,903
Nonclassroom dollars:	\$3,927	\$4,134	\$7,554	\$3,411	\$3,780
Administration	1,248	1,298	2,656	729	1,050
Plant Operations	1,147	1,295	2,297	920	951
Food Service	605	683	859	382	369
Transportation	480	369	930	343	406
Student Support	392	332	474	594	512
Instruction Support	52	157	338	431	470
Other	3	0	0	12	22

Proposition 301

Teacher pay

On average, each teacher earned an additional \$6,669 in salary.

Performance pay plan goals and results

Type of goal	Goal met?
Student achievement	■
Dropout/ graduation rates	■
Student attendance	■
Parent/student satisfaction	■
Teacher attendance	■
Teacher professional development	■
Teacher evaluations	■
Tutoring	■
Other	■

■ = yes, □ = no, and ▮ = partially