

Classroom Dollars and Proposition 301 Results

Solomon Elementary School District

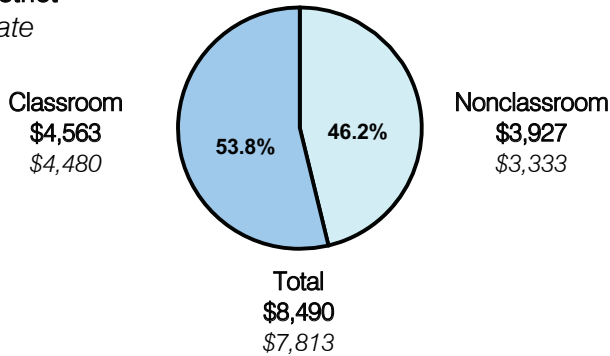
Graham County

District size: Very Small
 Students attending: 168
 Number of schools: 1
 Number of certified teachers: 11

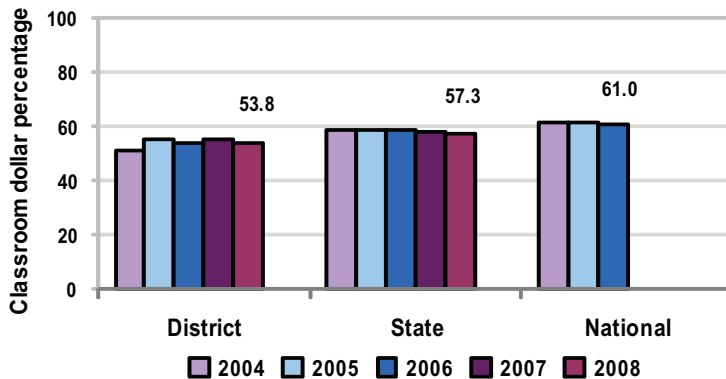
Classroom Dollars

Fiscal year 2008 averages per pupil

District
 State



5-year comparison



Expenditures by function

	Percentage					State 2008	National 2006
	District						
	2004	2005	2006	2007	2008		
Classroom dollars	50.9	55.1	54.1	55.3	53.8	57.3	61.0
Nonclassroom dollars:							
Administration	16.9	13.5	13.8	14.0	14.7	9.2	10.8
Plant operations	13.6	14.1	13.5	12.8	13.5	11.3	9.9
Food service	7.3	8.0	7.6	6.7	7.1	4.8	3.8
Transportation	5.5	5.5	5.2	4.4	5.7	4.4	4.2
Student support	4.5	2.9	4.5	5.2	4.6	7.4	5.2
Instruction support	1.3	0.9	1.3	1.5	0.6	5.4	4.9
Other				0.1		0.2	0.2

Comparative Information

	District			State
	2006	2007	2008	2008
Student/teacher ratio	14.9	13.3	15.0	17.3
Average teacher salary	\$35,859	\$37,408	\$40,934	\$44,967
Average years' experience	8.3	7.8	8.0	8.1

Classroom dollar ranking: 140 of 230 districts.

Proposition 301

District-reported 2008 results

Teacher pay

- On average, each teacher earned an additional \$5,701 in salary.

Performance

- The District accomplished its goals, which were the same as the prior fiscal year's goals and were based on school performance.
- Students maintained or improved standardized test scores in reading, math, and language.
- At least two-thirds of parents participating in a satisfaction survey rated the District's school as satisfactory.

Menu

- Teachers could earn additional monies for participating in professional development activities to become highly qualified.
- Teachers were also compensated for participating in after-school community-centered activities.
- Monies were also used for AIMS intervention, such as analyzing test scores and planning appropriate interventions to help increase future test scores.