

# Classroom Dollars and Proposition 301 Results

## Solomon Elementary School District

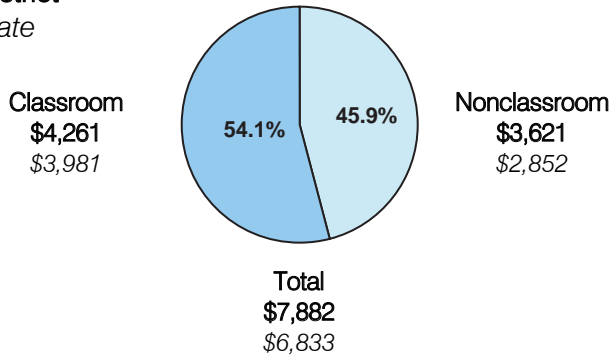
Graham County

District size: Very Small  
 Students attending: 171  
 Number of schools: 1  
 Number of certified teachers: 12

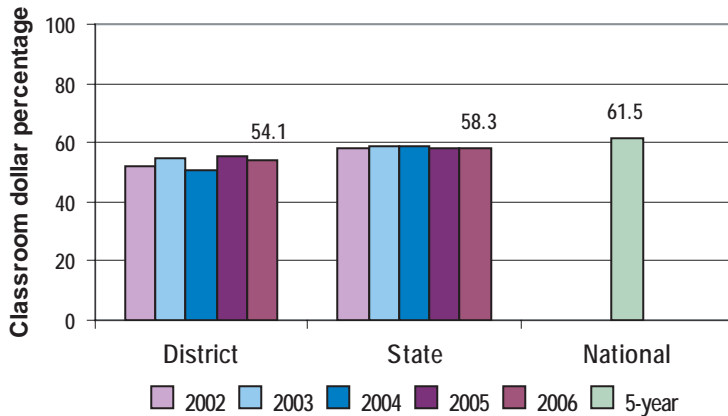
### Classroom Dollars

Fiscal year 2006 averages per pupil

District  
 State



### 5-year comparison



### Expenditures by function

	District					State 2006	National 5-year
	2002	2003	2004	2005	2006		
Classroom dollars	52.1	54.5	50.9	55.1	54.1	58.3	61.5
Nonclassroom dollars:							
Administration	18.0	16.5	16.9	13.5	13.8	9.4	11.0
Plant operations	14.8	12.4	13.6	14.1	13.5	11.2	9.6
Food service	6.2	7.0	7.3	8.0	7.6	4.7	3.9
Transportation	6.0	5.8	5.5	5.5	5.2	4.2	4.0
Student support	2.8	3.6	4.5	2.9	4.5	7.2	5.1
Instruction support	0.1	0.2	1.3	0.9	1.3	4.8	4.7
Other						0.2	0.2

### Comparative Information

	District			State 2006
	2004	2005	2006	
Student/teacher ratio	18.1	16.7	14.9	17.7
Average teacher salary	\$30,028	\$31,543	\$35,859	\$42,967
Average years' experience	7.6	8.3	8.3	8.3

Classroom dollar ranking: 137 of 229 districts.

### Proposition 301

#### District-reported 2006 results

##### Teacher pay

- On average, each teacher earned an additional \$6,114 in salary, and the nurse earned an additional \$1,358.

##### Performance

- The District accomplished most of its goals, which were similar to the prior fiscal year's goals and were based on school performance.
- Monies were awarded based on students' standardized test scores and overall improvement in core subjects, as well as parent satisfaction.

##### Menu

- 12 teachers and 1 nurse were compensated for participating in after-school activities, such as computer lab tutoring and reading programs.
- 12 teachers were compensated for participating in professional development workshops and in-service trainings.