

Classroom Dollars and Proposition 301 Results

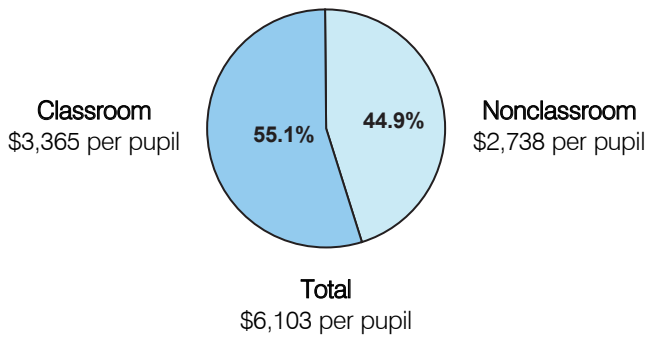
Solomon Elementary School District

Graham County

District size: Very Small
 Students attending: 184
 Number of schools: 1
 Number of certified teachers: 11

Classroom Dollars

Fiscal year 2005

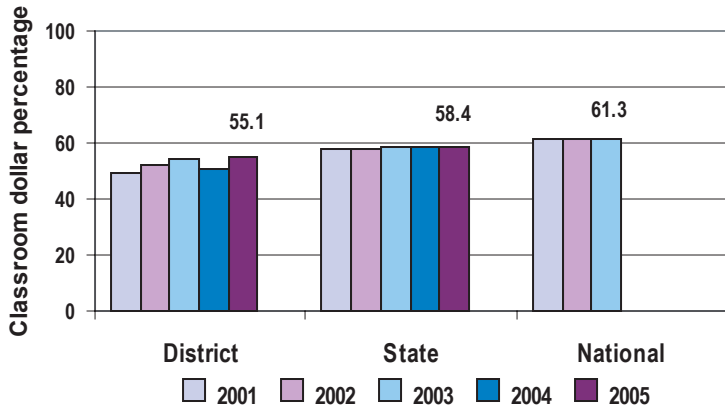


Comparative Information

	District			State
	2003	2004	2005	2005
Student/teacher ratio	15.9	18.1	16.7	18.3
Average teacher salary	\$31,207	\$30,028	\$31,543	\$39,095
Average years' experience	8.9	7.6	8.3	8.5

Classroom dollar ranking: 125 of 228 districts.

5-year comparison



Expenditures by function

	District					State	National
	2001	2002	2003	2004	2005	2005	2002
Classroom dollars	49.0	52.1	54.5	50.9	55.1	58.4	61.5
Nonclassroom dollars:							
Administration	15.8	18.0	16.5	16.9	13.5	9.5	11.1
Plant operations	16.9	14.8	12.4	13.6	14.1	11.4	9.5
Food service		6.2	7.0	7.3	8.0	4.8	4.0
Transportation	15.5	6.0	5.8	5.5	5.5	4.1	4.0
Student support	2.7	2.8	3.6	4.5	2.9	7.0	5.0
Instruction support	0.1	0.1	0.2	1.3	0.9	4.6	4.7
Other						0.2	0.2

Proposition 301

District-reported 2005 results

Teacher pay

- On average, each teacher earned an additional \$3,061 in salary, and a nurse earned an additional \$200.

Performance

- The District accomplished its goals, which were similar to the prior fiscal year's goals and were based on school performance.
- Monies were awarded based on standardized achievement test scores and parent satisfaction.

Menu

- 11 teachers and 1 nurse were compensated for completing professional development workshops and activities.