

# Somerton Elementary School District

Yuma County

Efficiency peer groups 9 and T-6, Achievement peer group 19<sup>1</sup>

Legislative district(s): 4

District size, location:

Medium-large, Town

Students attending:

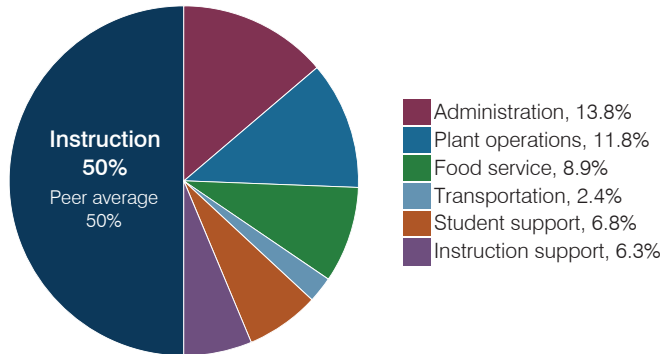
2,835

Number of schools:

5

## OPERATIONAL EFFICIENCY

### Spending by operational area



### Efficiency measures relative to peer averages

Operational area	Measure	District	Peer average	State average
Administration	Cost per pupil	\$1,013	\$1,060	\$844
	Students per administrative position	62	58	67
Plant operations	Cost per square foot	\$7.58	\$6.71	\$6.30
	Square footage per student	114	153	155
Food service	Cost per meal	\$2.89	\$3.04	\$2.88
Transportation	Cost per mile	\$3.29	\$3.94	\$3.84
	Cost per rider	\$521	\$728	\$1,198

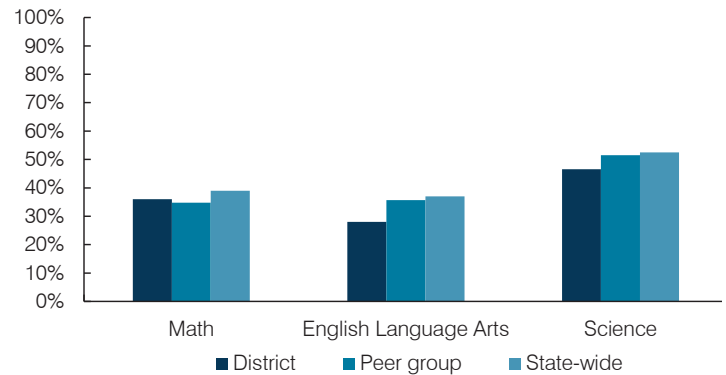
Very low    Low    Comparable    High    Very high

### Per pupil spending

Spending by area	District		Peer average 2017	State average 2017
	2016	2017		
Instruction	\$ 3,444	\$ 3,658	\$ 4,115	\$ 4,377
Administration	956	1,013	1,060	844
Plant operations	876	865	1,004	977
Food service	627	647	571	422
Transportation	164	173	427	381
Student support	523	499	528	679
Instruction support	424	460	463	461
<b>Total operational</b>	<b>\$ 7,014</b>	<b>\$ 7,315</b>	<b>\$ 8,168</b>	<b>\$ 8,141</b>
Land and buildings	\$ 331	\$ 300	\$ 917	\$ 691
Equipment	417	890	314	424
Interest	82	72	77	236
Other	146	146	148	161
<b>Total nonoperational</b>	<b>\$ 976</b>	<b>\$ 1,408</b>	<b>\$ 1,456</b>	<b>\$ 1,512</b>
<b>Total per pupil spending</b>	<b>\$ 7,990</b>	<b>\$ 8,723</b>	<b>\$ 9,624</b>	<b>\$ 9,653</b>

## STUDENT ACHIEVEMENT, STUDENT AND TEACHER MEASURES, AND REVENUES

### Students who passed state assessments



### Student and teacher measures

Measure	District	Peer average	State average
Attendance rate	95%	93%	94%
Graduation rate (2016)	N/A	N/A	N/A
Poverty rate (2016)	33%	34%	22%
Special education population	11%	15%	12%
Students per teacher	20.6	14.8	18.5
Average teacher salary	\$43,669	\$46,717	\$48,372
Amount from Prop 301	\$4,809	\$4,152	\$5,840
Average years of teacher experience	9.2	11.3	11.3
Percentage of teachers in first 3 years	14%	16%	19%

### Per pupil revenues

Revenues by source	District		Peer average 2017	State average 2017
	2016	2017		
Federal	\$ 2,007	\$ 1,893	\$ 1,753	\$ 1,318
State	4,948	5,112	4,842	3,831
Local	868	974	2,654	4,443
<b>Total per pupil revenues</b>	<b>\$ 7,823</b>	<b>\$ 7,979</b>	<b>\$ 9,249</b>	<b>\$ 9,592</b>

### Select revenues from common sources

	District 2016	District 2017	Peer average	State average
Equalization formula funding	\$ 5,010	\$ 5,016	\$ 5,748	\$ 5,503
Amount from Prop 123	234	230	239	245
Prop 123 additional funding	43	42	44	46
Grants	2,012	1,939	2,064	1,185
Donations and tax credits	48	31	69	89

### Select revenues from less common sources

	District 2016	District 2017	Number of peers receiving
Desegregation	\$ 0	\$ 0	0 of 10
Small school adjustment	0	0	0 of 10
Federal impact aid	24	21	3 of 10
Voter-approved levy increases	544	427	8 of 10

<sup>1</sup> See Appendix A for information such as districts included in each peer group and Appendix B for sources and methodology.

# Somerton ESD—page 2

## Instructional spending percentage

Year:	2001	2002	2003	2004	2005	2006	2007	2008	2009	2010	2011	2012	2013	2014	2015	2016	2017
Percentage:	50.4	51.4	52.1	51.7	50.7	50.5	50.6	47.9	49.6	49.7	47.1	46.6	47.1	47.7	48.9	49.1	50.0

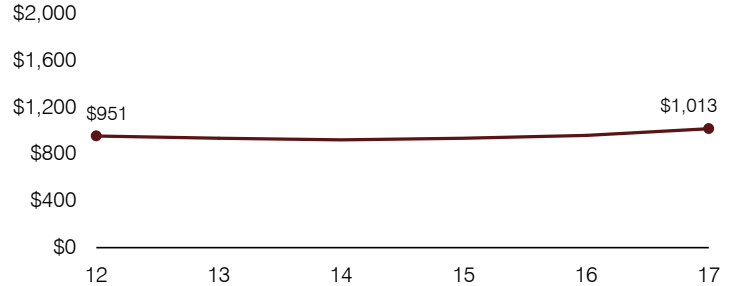
## OPERATIONAL TRENDS AND FINANCIAL STRESS ASSESSMENT

Fiscal years as indicated

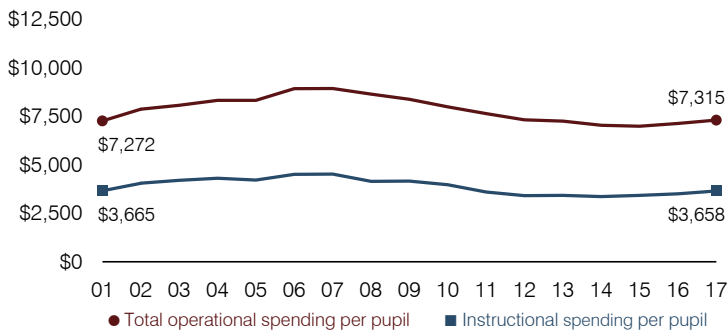
### 5-year spending trend (2012 through 2017)

Total operational spending per pupil, adjusted for inflation, returned to 2012 levels. The percentage of dollars spent on instruction increased from 46.6 to 50 percent. Overall, as a percentage of total operational spending, instruction support decreased substantially, plant operations decreased, and transportation decreased slightly, while food service increased slightly.

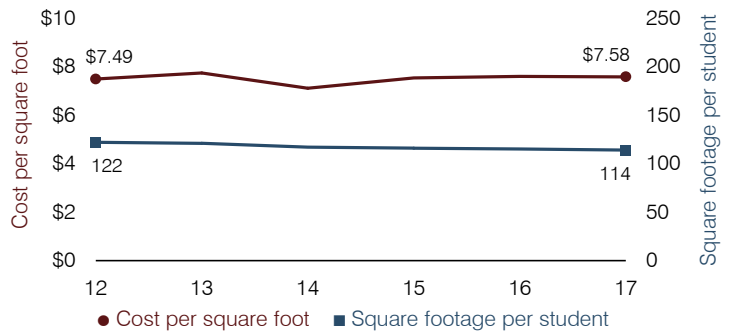
### Administrative cost per pupil



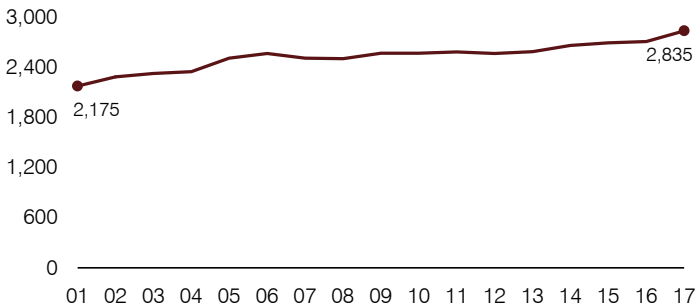
### Total operational and instructional spending per pupil (inflation adjusted to 2017 dollars)



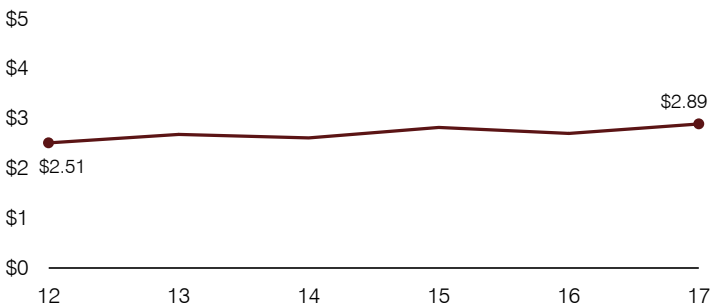
### Plant cost per square foot and square footage per student



### Students attending



### Food service cost per meal



### Financial stress assessment

Overall financial stress level:

**Low**

Measure: 2015 through 2017

Assessment

Change in number of district students	Increase
Spending exceeded operating/capital budgets	No overspending
Spending increase election results	Voter-approved
Operating reserve percentage, Trend	4.6%, Increasing
Years of capital reserve held	More than 3 years
Current financial and internal control status	Compliant

Low

Moderate

High

### Transportation costs per mile and per rider

