

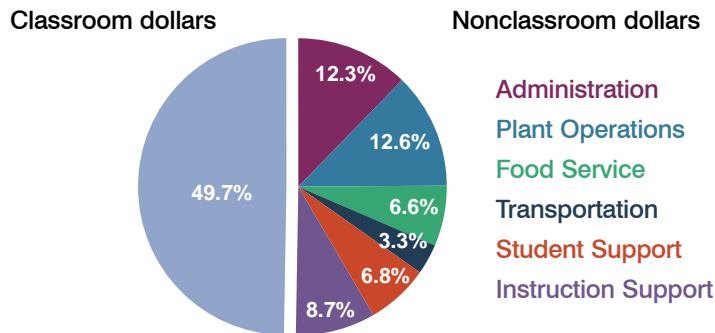
# Somerton Elementary School District

Yuma County  
Peer groups: Efficiency 10, Achievement 8  
Legislative district(s): 24

District size: Medium-Large  
Students attending: 2,568  
Number of schools: 5

## OPERATIONAL EFFICIENCY

### Spending by function



### 5-year trend

Total spending per pupil increased by 9 percent. Spending in the classroom remained fairly stable, but decreased overall from 50.7 to 49.7 percent. Spending on food service and student support decreased, while spending in all other nonclassroom areas increased.

### District's cost measures relative to peer group

Operational Area	Measure	District	Peer Average	State Average
Administration	Cost per pupil	\$880	\$1,019	\$721
	Students per administrator	61	65	66
Plant Operations	Cost per square foot	\$7.40	\$6.70	\$6.25
	Square footage per student	121	130	146
Food Service	Cost per meal equivalent	\$2.04	\$2.42	\$2.41
Transportation	Cost per mile	\$3.55	\$3.03	\$3.35
	Miles per rider	163	196	282

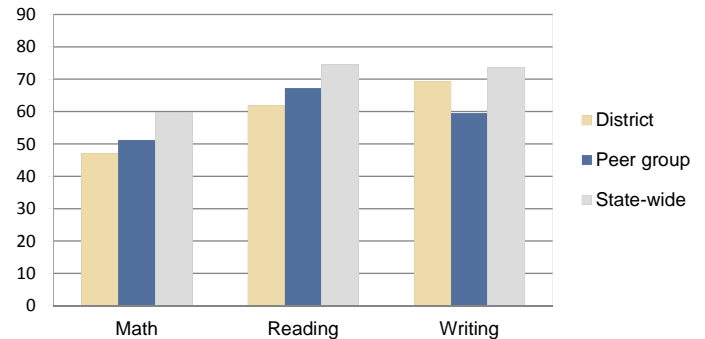
Very low Low Comparable High Very high

### Per-pupil spending by function

	District		Peer 2010	State 2010	National 2008
	2009	2010			
<b>Total</b>	<b>\$7,425</b>	<b>\$7,150</b>	<b>\$7,810</b>	<b>\$7,609</b>	<b>\$10,297</b>
<b>Classroom dollars</b>	<b>\$3,681</b>	<b>\$3,553</b>	<b>\$4,011</b>	<b>\$4,253</b>	<b>\$6,262</b>
<b>Nonclassroom dollars:</b>	<b>\$3,744</b>	<b>\$3,597</b>	<b>\$3,799</b>	<b>\$3,356</b>	<b>\$4,035</b>
Administration	976	880	1,019	721	1,109
Plant Operations	945	899	916	914	1,003
Food Service	545	472	503	366	390
Transportation	230	234	432	342	438
Student Support	521	491	478	581	556
Instruction Support	527	621	451	432	539

## STUDENT ACHIEVEMENT AND TEACHER INFORMATION

### Percentage of students meeting state standards (AIMS)



### Adequate Yearly Progress (AYP) toward federal goals

3 schools met all applicable AYP objectives for NCLB. 1 did not because some students did not demonstrate sufficient academic progress. 1 school was not eligible for an AYP determination.

### Student and teacher information

Measure	District	Peer Average	State Average
Attendance rate	94%	94%	94%
Graduation rate (2009)	N/A	N/A	76%
Poverty rate (2009)	33%	34%	21%
Student/teacher ratio	20.2	14.4	17.9
Average teacher salary	\$40,904	\$43,616	\$47,077
Average years' experience	7.2	11.0	10.6
Percent of teachers in first 3 years	31%	20%	20%

### Proposition 301

#### Teacher and other staff pay

On average, each teacher earned \$2,632 in additional pay, and each speech pathologist, counselor, reading coach, mentor teacher, intervention specialist, and migrant advocate earned between \$2,288 and \$2,750.

#### Performance pay plan goals and results

Type of goal	Goal met?
Student achievement	■
Dropout/graduation rates	-
Student attendance	■
Parent/student satisfaction	-
Teacher attendance	-
Teacher professional development	-
Teacher evaluations	-
Tutoring	-
Other	-

■ = yes, □ = no, ▴ = partially, and - = no goal set