

Classroom Dollars and Proposition 301 Results

Somerton Elementary School District

Yuma County

District size: Medium
 Students attending: 2,502
 Number of schools: 5
 Number of certified teachers: 131

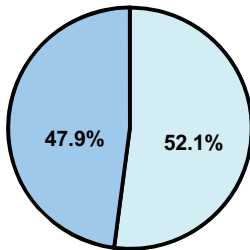
Classroom Dollars

Fiscal year 2008 averages per pupil

District

State

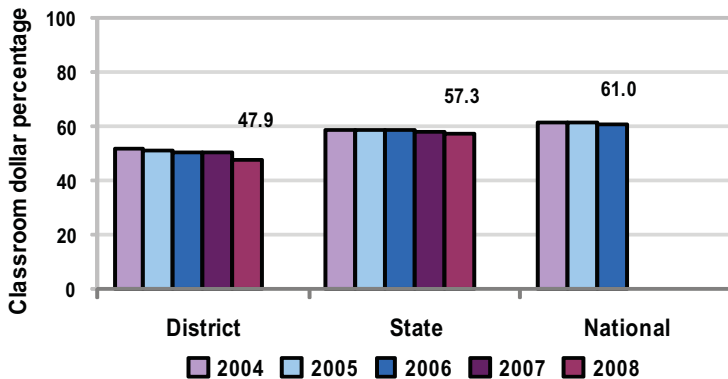
Classroom
 \$3,619
 \$4,480



Nonclassroom
 \$3,933
 \$3,333

Total
 \$7,552
 \$7,813

5-year comparison



Expenditures by function

	District					State 2008	National 2006
	2004	2005	2006	2007	2008		
Classroom dollars	51.7	50.7	50.0	50.6	47.9	57.3	61.0
Nonclassroom dollars:							
Administration	10.8	10.5	12.9	12.5	14.0	9.2	10.8
Plant operations	11.6	10.7	10.8	10.1	11.4	11.3	9.9
Food service	8.7	8.9	7.4	7.6	8.2	4.8	3.8
Transportation	3.3	3.2	2.9	3.0	3.6	4.4	4.2
Student support	6.3	8.2	6.6	7.5	7.4	7.4	5.2
Instruction support	7.6	7.8	9.4	8.7	7.5	5.4	4.9
Other						0.2	0.2

Comparative Information

	District			State 2008
	2006	2007	2008	
Student/teacher ratio	19.3	20.2	19.0	17.3
Average teacher salary	\$35,853	\$36,956	\$37,574	\$44,967
Average years' experience	6.3	6.0	5.8	8.1

Classroom dollar ranking: 192 of 230 districts.

Proposition 301

District-reported 2008 results

Teacher pay

- On average, each teacher, speech pathologist, and counselor earned \$4,626 in additional salary.

Performance

- The District accomplished its goals, which were the same as the prior fiscal year's goals and were based on district, school, and individual performance.
- Student achievement goals were based on students' standardized test scores.
- Teachers had to develop and implement instructional strategies and curriculum maps, provide tutorials, and monitor students' progress.
- Student attendance was at least 94 percent.
- Parent and student satisfaction with the District improved over the previous year.

Menu

- Monies were used to increase eligible employee compensation.
- 4 teachers were compensated for tutoring approximately 170 students for AIMS intervention.
- Monies were also used to hire 3 teachers to reduce 5th-grade class sizes.