

# Sonoita Elementary School District

Santa Cruz County

Efficiency peer groups 11 and T-11, Achievement peer group 17<sup>1</sup>

Legislative district(s): 2

District size, location:

Very small, Rural

Students attending:

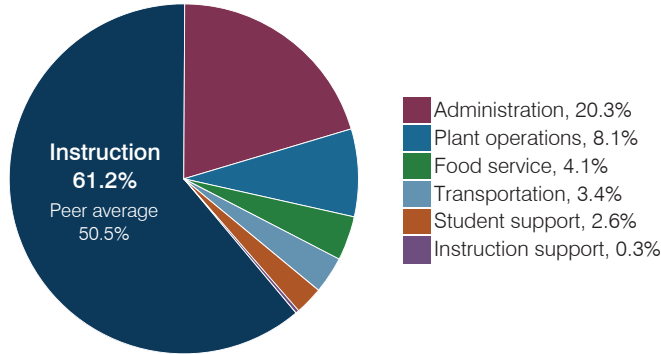
103

Number of schools:

1

## OPERATIONAL EFFICIENCY

### Spending by operational area



### Efficiency measures relative to peer averages

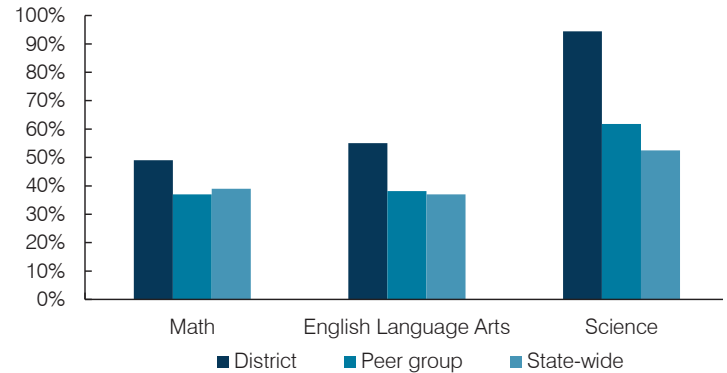
| Operational area | Measure                              | District | Peer average | State average |
|------------------|--------------------------------------|----------|--------------|---------------|
| Administration   | Cost per pupil                       | \$3,922  | \$3,137      | \$844         |
|                  | Students per administrative position | 23       | 32           | 67            |
| Plant operations | Cost per square foot                 | \$5.11   | \$6.96       | \$6.30        |
|                  | Square footage per student           | 308      | 412          | 155           |
| Food service     | Cost per meal                        | \$6.20   | \$5.79       | \$2.88        |
| Transportation   | Cost per mile                        | \$1.16   | \$1.87       | \$3.84        |
|                  | Cost per rider                       | \$1,530  | \$1,459      | \$1,198       |

### Per pupil spending

| Spending by area                | District         |                  | Peer average 2017 | State average 2017 |
|---------------------------------|------------------|------------------|-------------------|--------------------|
|                                 | 2016             | 2017             |                   |                    |
| Instruction                     | \$ 9,701         | \$ 11,803        | \$ 8,613          | \$ 4,377           |
| Administration                  | 3,275            | 3,922            | 3,137             | 844                |
| Plant operations                | 1,789            | 1,572            | 2,644             | 977                |
| Food service                    | 638              | 782              | 1,000             | 422                |
| Transportation                  | 1,099            | 666              | 961               | 381                |
| Student support                 | 622              | 494              | 601               | 679                |
| Instruction support             | 188              | 60               | 498               | 461                |
| <b>Total operational</b>        | <b>\$ 17,312</b> | <b>\$ 19,299</b> | <b>\$ 17,454</b>  | <b>\$ 8,141</b>    |
| Land and buildings              | \$ 2,689         | \$ 79            | \$ 1,161          | \$ 691             |
| Equipment                       | 722              | 635              | 735               | 424                |
| Interest                        | 0                | 0                | 31                | 236                |
| Other                           | 1                | 0                | 90                | 161                |
| <b>Total nonoperational</b>     | <b>\$ 3,412</b>  | <b>\$ 714</b>    | <b>\$ 2,017</b>   | <b>\$ 1,512</b>    |
| <b>Total per pupil spending</b> | <b>\$ 20,724</b> | <b>\$ 20,013</b> | <b>\$ 19,471</b>  | <b>\$ 9,653</b>    |

## STUDENT ACHIEVEMENT, STUDENT AND TEACHER MEASURES, AND REVENUES

### Students who passed state assessments



### Student and teacher measures

| Measure                                 | District | Peer average | State average |
|---|----------|--------------|---------------|
| Attendance rate                         | 93%      | 94%          | 94%           |
| Graduation rate (2016)                  | N/A      | N/A          | N/A           |
| Poverty rate (2016)                     | 18%      | 19%          | 22%           |
| Special education population            | 22%      | 14%          | 12%           |
| Students per teacher                    | 7.7      | 13.3         | 18.5          |
| Average teacher salary                  | \$50,107 | \$44,961     | \$48,372      |
| Amount from Prop 301                    | \$777    | \$4,257      | \$5,840       |
| Average years of teacher experience     | 9.6      | 12.6         | 11.3          |
| Percentage of teachers in first 3 years | 30%      | 11%          | 19%           |

### Per pupil revenues

| Revenues by source              | District         |                  | Peer average 2017 | State average 2017 |
|---------------------------------|------------------|------------------|-------------------|--------------------|
|                                 | 2016             | 2017             |                   |                    |
| Federal                         | \$ 1,714         | \$ 1,864         | \$ 2,908          | \$ 1,318           |
| State                           | 5,509            | 4,096            | 5,692             | 3,831              |
| Local                           | 12,482           | 14,261           | 13,343            | 4,443              |
| <b>Total per pupil revenues</b> | <b>\$ 19,705</b> | <b>\$ 20,221</b> | <b>\$ 21,943</b>  | <b>\$ 9,592</b>    |

#### Select revenues from common sources

|                              | District 2016 | District 2017 | Peer average | State average |
|------------------------------|---------------|---------------|--------------|---------------|
| Equalization formula funding | \$ 7,611      | \$ 8,223      | \$ 9,932     | \$ 5,503      |
| Amount from Prop 123         | 231           | 255           | 315          | 245           |
| Prop 123 additional funding  | 49            | 57            | 57           | 46            |
| Grants                       | 1,717         | 1,943         | 2,701        | 1,185         |
| Donations and tax credits    | 167           | 211           | 184          | 89            |

#### Select revenues from less common sources

|                               | District 2016 | District 2017 | Number of peers receiving |
|-------------------------------|---------------|---------------|---------------------------|
| Desegregation                 | \$ 0          | \$ 0          | 0 of 54                   |
| Small school adjustment       | 5,809         | 5,635         | 44 of 54                  |
| Federal impact aid            | 0             | 0             | 5 of 54                   |
| Voter-approved levy increases | 0             | 0             | 7 of 54                   |

<sup>1</sup> See Appendix A for information such as districts included in each peer group and Appendix B for sources and methodology.

**Instructional spending percentage**

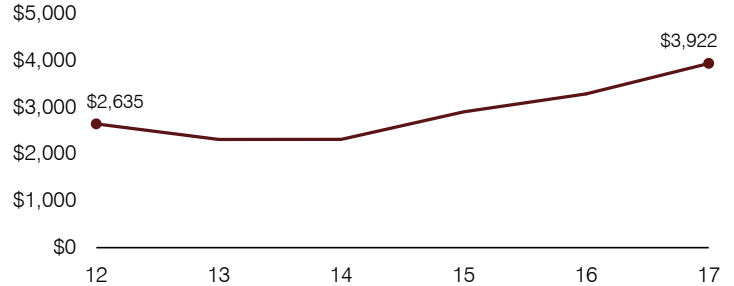
|             |      |      |      |      |      |      |      |      |      |      |      |      |      |      |      |      |      |
|-------------|------|------|------|------|------|------|------|------|------|------|------|------|------|------|------|------|------|
| Year:       | 2001 | 2002 | 2003 | 2004 | 2005 | 2006 | 2007 | 2008 | 2009 | 2010 | 2011 | 2012 | 2013 | 2014 | 2015 | 2016 | 2017 |
| Percentage: | 65.5 | 63.7 | 68.3 | 74.2 | 68.1 | 66.7 | 68.5 | 65.7 | 69.6 | 64.7 | 59.7 | 57.9 | 61.0 | 58.9 | 55.1 | 56.0 | 61.2 |

**OPERATIONAL TRENDS AND FINANCIAL STRESS ASSESSMENT**  
Fiscal years as indicated

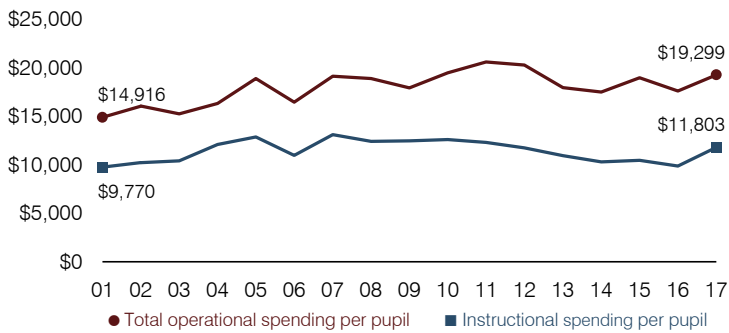
**5-year spending trend (2012 through 2017)**

Total operational spending per pupil, adjusted for inflation, decreased by 5 percent. The percentage of dollars spent on instruction varied year to year, increasing overall from 57.9 to 61.2 percent. As a percentage of total operational spending, most noninstructional areas also varied year to year, as is common for very small districts. Overall, plant operations and transportation decreased substantially.

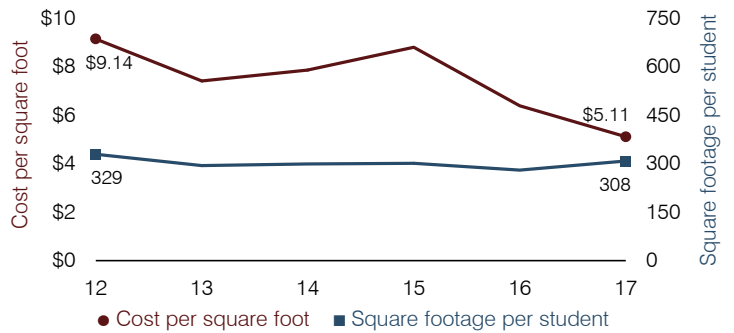
**Administrative cost per pupil**



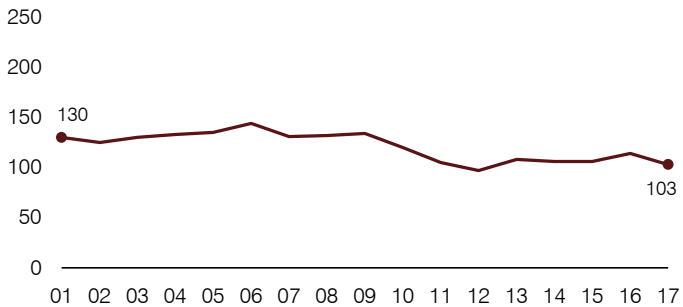
**Total operational and instructional spending per pupil (inflation adjusted to 2017 dollars)**



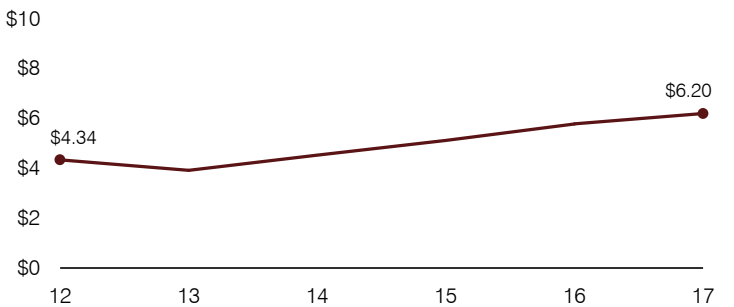
**Plant cost per square foot and square footage per student**



**Students attending**



**Food service cost per meal**



**Financial stress assessment**

Overall financial stress level: **Low**

| Measure: 2015 through 2017                    | Assessment              |
|---|-------------------------|
| Change in number of district students         | Small school adjustment |
| Spending exceeded operating/capital budgets   | No overspending         |
| Spending increase election results            | No election held        |
| Operating reserve percentage, Trend           | 14.9%, Varying          |
| Years of capital reserve held                 | More than 3 years       |
| Current financial and internal control status | Compliant               |

Low
Moderate
High

**Transportation costs per mile and per rider**

