

# Stanfield Elementary School District

Pinal County  
Operational peer group: J  
Legislative districts: 23

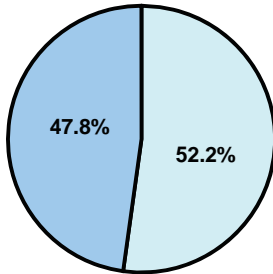
District size: Medium  
Students attending: 687  
Number of schools: 1

## OPERATIONAL EFFICIENCY

### Average per-pupil spending

District  
State

**Classroom**  
**\$3,959**  
\$4,497



**Nonclassroom**  
**\$4,329**  
\$3,411

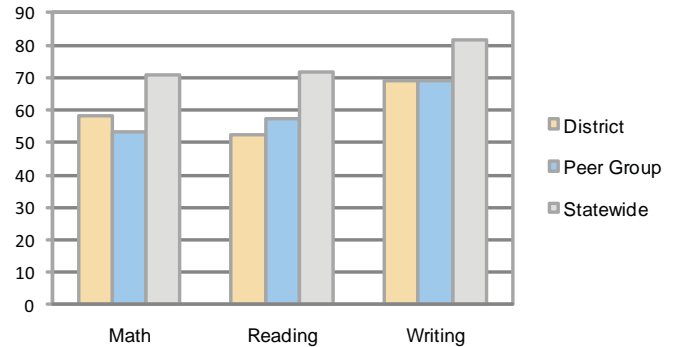
**Total**  
**\$8,288**  
\$7,908

### 5-year trend

Total spending per pupil increased by 3 percent. Spending in the classroom was very inconsistent year to year and increased overall from 46.9 to 47.8 percent. Spending on administration and instruction support decreased significantly, while spending in other nonclassroom areas was very inconsistent year to year.

## STUDENT ACHIEVEMENT AND TEACHER INFORMATION

### Percentage of students meeting state standards (AIMS)



### Adequate Yearly Progress (AYP) toward federal goals

The District's school did not meet all applicable AYP objectives for NCLB because it failed to meet the percentage of students tested objective.

### Student and teacher information

Measure	District	Peer average	State average
Attendance rate	94%	93%	95%
Graduation rate (2008)	N/A	70%	75%
Poverty rate	21%	31%	19%
Student/teacher ratio	17.4	14.9	17.1
Average teacher salary	\$42,662	\$41,086	\$45,209
Average years' experience	8.2	11.1	8.3
Percent of teachers in first 3 years	15%	20%	16%

### District's cost measures relative to peer group

Operational Area	Measure	District	Peer Average	State Average
Administration	Cost per pupil	\$1,010	\$921	\$729
	Students per administrator	57	64	66
Plant Operations	Cost per square foot	\$7.02	\$6.71	\$6.40
	Square footage per student	142	125	144
Food Service	Cost per meal equivalent	\$2.73	\$2.56	\$2.53
Transportation	Cost per mile	\$2.04	\$3.04	\$3.36
	Miles per rider	NR	145	271

Very Low   Low   Comparable   High   Very High

### Per-pupil spending by function

	District		Peer	State	National
	2008	2009	2009	2009	2007
<b>Total</b>	<b>\$8,484</b>	<b>\$8,288</b>	<b>\$7,752</b>	<b>\$7,908</b>	<b>\$9,683</b>
<b>Classroom dollars</b>	<b>\$4,007</b>	<b>\$3,959</b>	<b>\$4,151</b>	<b>\$4,497</b>	<b>\$5,903</b>
<b>Nonclassroom dollars:</b>	<b>\$4,477</b>	<b>\$4,329</b>	<b>\$3,601</b>	<b>\$3,411</b>	<b>\$3,780</b>
Administration	1,023	1,010	921	729	1,050
Plant Operations	990	995	879	920	951
Food Service	652	668	524	382	369
Transportation	852	683	410	343	406
Student Support	459	463	483	594	512
Instruction Support	501	510	384	431	470
Other	0	0	0	12	22

### Proposition 301

#### Teacher pay

On average, each teacher earned \$2,699 in additional salary, and the librarian and counselor earned between \$915 and \$2,785.

#### Performance pay plan goals and results

Type of goal	Goal met?
Student achievement	■
Dropout/ graduation rates	■
Student attendance	■
Parent/student satisfaction	■
Teacher attendance	■
Teacher professional development	■
Teacher evaluations	■
Tutoring	■
Other	■

■ = yes, □ = no, and ▴ = partially