

Classroom Dollars and Proposition 301 Results

Stanfield Elementary School District

Pinal County

District size: Medium
 Students attending: 684
 Number of schools: 1
 Number of certified teachers: 40

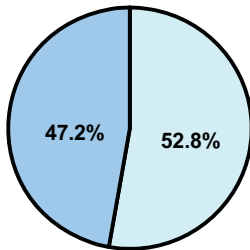
Classroom Dollars

Fiscal year 2008 averages per pupil

District

State

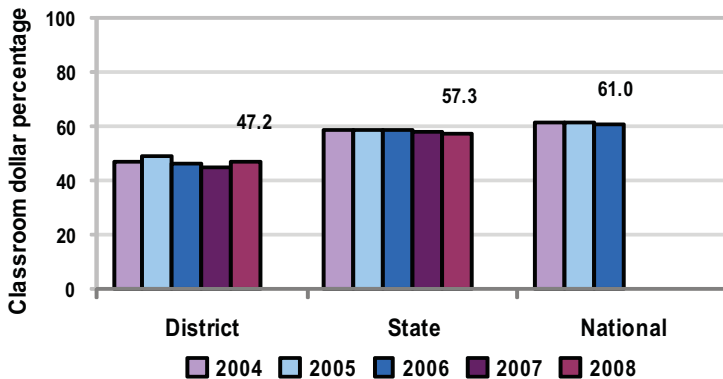
Classroom
\$4,007
\$4,480



Nonclassroom
\$4,477
\$3,333

Total
\$8,484
\$7,813

5-year comparison



Expenditures by function

	District					State 2008	National 2006
	2004	2005	2006	2007	2008		
Classroom dollars	46.9	48.9	46.3	44.6	47.2	57.3	61.0
Nonclassroom dollars:							
Administration	15.2	15.9	15.9	11.1	12.1	9.2	10.8
Plant operations	9.4	9.1	10.2	13.9	11.7	11.3	9.9
Food service	7.0	6.4	6.1	7.7	7.7	4.8	3.8
Transportation	8.5	7.5	9.0	9.1	10.0	4.4	4.2
Student support	1.6	5.7	7.8	9.1	5.4	7.4	5.2
Instruction support	11.4	6.5	4.7	4.5	5.9	5.4	4.9
Other						0.2	0.2

Comparative Information

	District			State
	2006	2007	2008	2008
Student/teacher ratio	16.2	17.2	17.1	17.3
Average teacher salary	\$33,906	\$39,030	\$41,930	\$44,967
Average years' experience	6.8	6.6	7.1	8.1

Classroom dollar ranking: 194 of 230 districts.

Proposition 301

District-reported 2008 results

Teacher pay

- On average, each teacher and librarian earned between \$4,057 and \$4,104 in additional salary.

Performance

- The District accomplished its goals, which were similar to the prior fiscal year's goals and were based on school and individual performance.
- Student attendance exceeded 95 percent during state testing.
- Teachers received acceptable performance evaluations.
- Teachers also participated in committees and other leadership activities and completed instructional activities related to student achievement of academic standards.

Menu

- Monies were used for a part-time Dropout Prevention Coordinator, who sent 240 letters to parents of students with poor attendance and issued citations to 9 students with continued poor attendance. The District reported that the number of students with 5 or more unexcused absences declined by 28 percent from the previous year.