

# Stanfield Elementary School District

Pinal County

Efficiency peer groups 10 and T-8, Achievement peer group 17

Legislative district(s): 4 and 11

District size, location:

Small, Rural

Students attending:

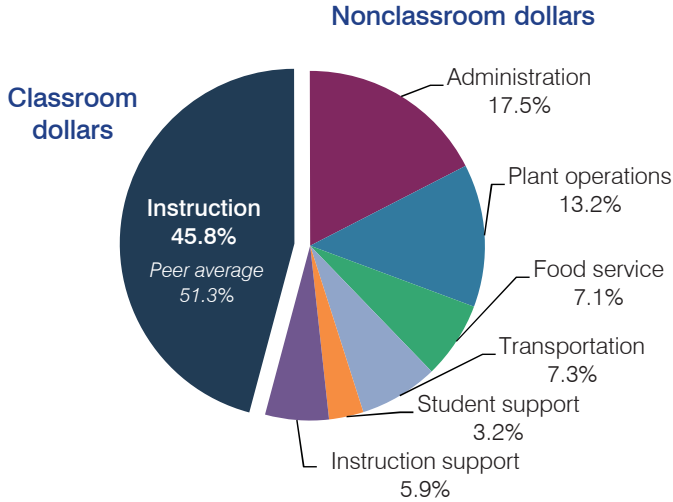
499

Number of schools:

1

## OPERATIONAL EFFICIENCY

### Spending by operational area



### Efficiency measures relative to peer averages

Operational area	Measure	District	Peer average	State average
Administration	Cost per pupil	\$1,550	\$1,214	\$780
	Students per administrative position	43	57	67
Plant operations	Cost per square foot	\$5.96	\$6.49	\$6.09
	Square footage per student	195	181	153
Food service	Cost per meal equivalent	\$2.56	\$3.15	\$2.79
Transportation	Cost per mile	\$2.13	\$2.54	\$3.66
	Cost per rider	\$870	\$854	\$1,071

Very low   Low   Comparable   High   Very high

### Per pupil spending

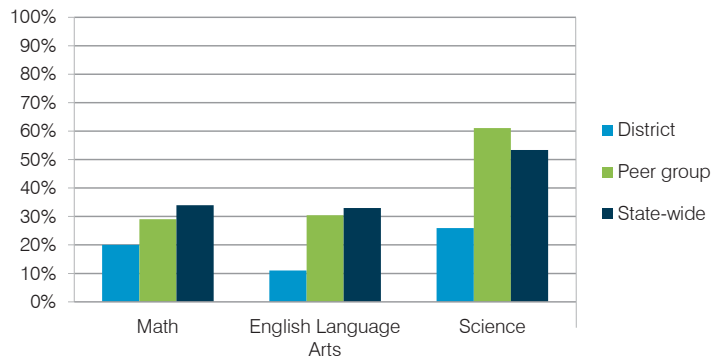
Spending by area	District		Peer average	State average
	2014	2015	2015	2015
Instruction	\$ 4,798	\$ 4,052	\$ 4,673	\$ 4,105
Administration	1,232	1,550	1,214	780
Plant operations	1,159	1,164	1,094	930
Food service	711	631	571	417
Transportation	758	646	541	371
Student support	272	280	489	613
Instruction support	623	526	283	442
<b>Total operational</b>	<b>\$ 9,553</b>	<b>\$ 8,849</b>	<b>\$ 8,865</b>	<b>\$ 7,658</b>
Land and buildings	\$ 5	\$ 152	\$ 778	\$ 641
Equipment	606	513	319	383
Interest	6	0	211	225
Other	0	14	53	150
<b>Total nonoperational</b>	<b>\$ 617</b>	<b>\$ 679</b>	<b>\$ 1,361</b>	<b>\$ 1,399</b>
<b>Total per pupil spending</b>	<b>\$ 10,170</b>	<b>\$ 9,528</b>	<b>\$ 10,226</b>	<b>\$ 9,057</b>

## STUDENT AND TEACHER MEASURES, FINANCIAL ASSESSMENT, AND REVENUE

### Student and teacher measures

Measure	District	Peer average	State average
Attendance rate	93%	95%	94%
Graduation rate (2014)	N/A	N/A	N/A
Poverty rate (2014)	22%	19%	23%
Students per teacher	18.5	12.5	18.6
Average teacher salary	\$46,551	\$42,845	\$46,008
Average years of teacher experience	11.6	12.2	11.0
Percentage of teachers in first 3 years	10%	13%	20%

### Students who met state standards



### Financial stress assessment

Overall financial stress level: **Low**

Measure: 2013 through 2015

Assessment

Change in number of district students	Moderate decrease
Spending exceeded operating/capital budgets	No overspending
Spending increase election results	Voter-rejected
Operating reserve percentage (max. 4%), trend	3.6%, Decreasing
Years of capital reserve held	More than 3 years
Current financial and internal control status	Compliant

Low   Moderate   High

### Per pupil revenues

Revenues by source	District		Peer average	State average
	2014	2015	2015	2015
Federal	\$ 2,460	\$ 2,640	\$ 3,069	\$ 1,299
State	5,113	4,853	3,876	3,517
Local	2,217	1,902	4,375	4,248
<b>Total revenues per pupil</b>	<b>\$ 9,790</b>	<b>\$ 9,395</b>	<b>\$ 11,320</b>	<b>\$ 9,064</b>
<b>Select revenues from common sources</b>				
Equalization formula funding	\$ 6,472	\$ 6,021	\$ 6,395	\$ 5,303
Grants	2,168	2,326	2,153	1,167
Donations and tax credits	10	14	205	78
<b>Select revenues from less common sources</b>				
Desegregation	\$ 0	\$ 0	0 of 13	
Small school adjustment	0	0	1 of 13	
Federal impact aid	295	319	4 of 13	
Voter-approved levy increases	372	0	8 of 13	

# Stanfield ESD—page 2

## Classroom dollar percentage

Year:	2001	2002	2003	2004	2005	2006	2007	2008	2009	2010	2011	2012	2013	2014	2015
Percentage:	56.0	54.3	52.0	46.9	48.9	46.3	44.6	47.2	47.8	48.2	49.1	51.8	51.5	50.2	45.8

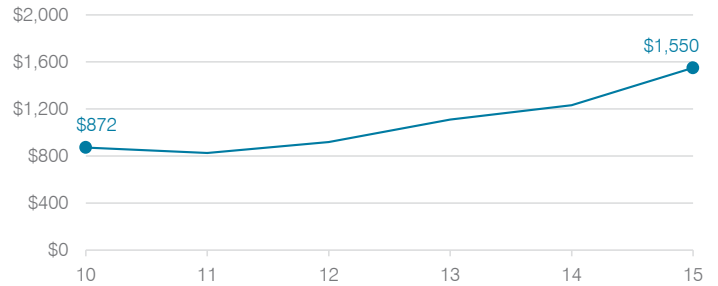
## OPERATIONAL TRENDS

Fiscal years as indicated

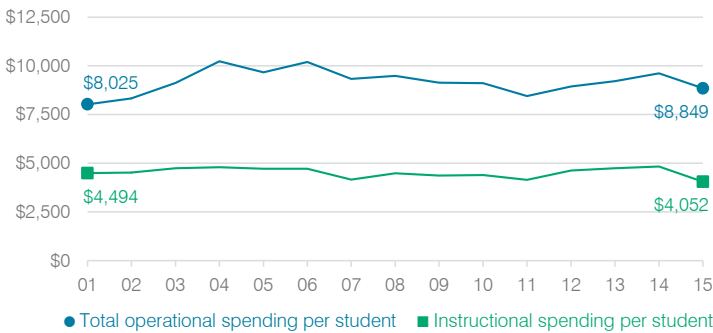
### 5-year spending trend (2010 through 2015)

Total operational spending per pupil, adjusted for inflation, decreased by 3 percent. The percentage of dollars spent in the classroom decreased overall from 48.2 to 45.8 percent. As a percentage of total operational spending, administration increased substantially. Overall, instruction support decreased substantially and plant operations and student support decreased. Transportation varied year to year.

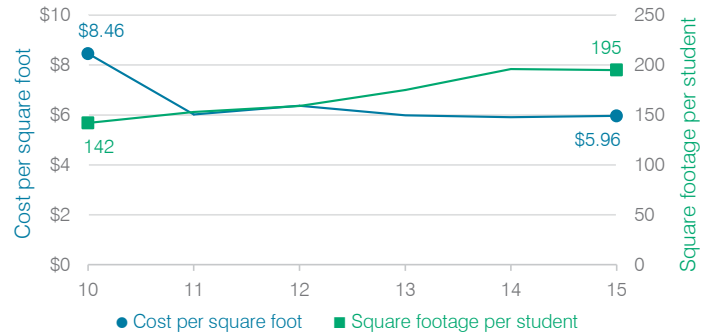
### Administrative cost per student



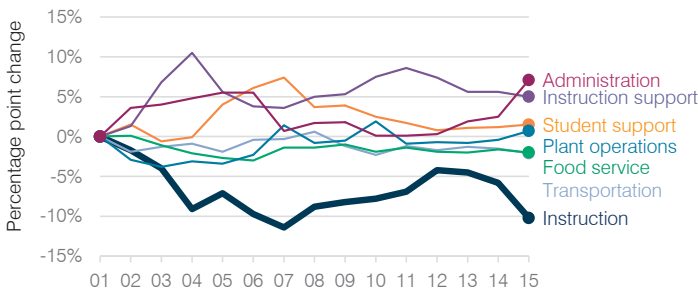
### Total operational and instructional spending per student (inflation adjusted to 2015 dollars)



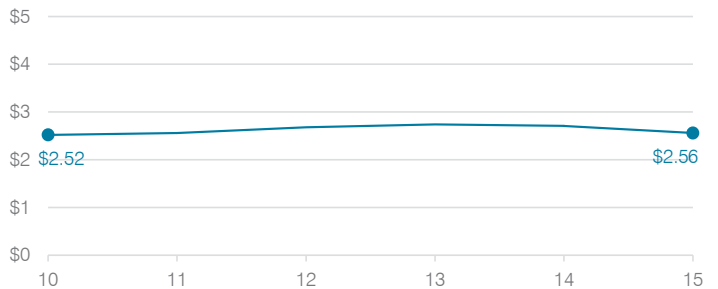
### Plant cost per square foot and square footage per student



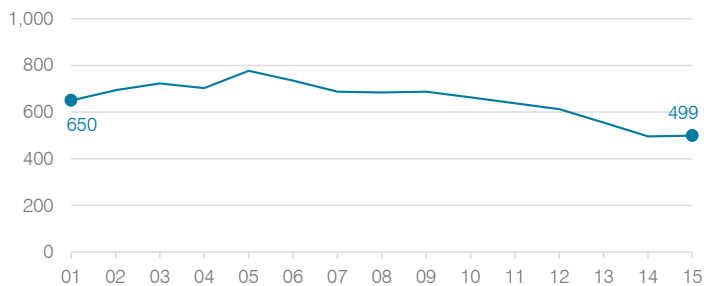
### Changes in operational spending percentages



### Food service cost per meal



### Students attending



### Transportation costs per mile and per rider

