

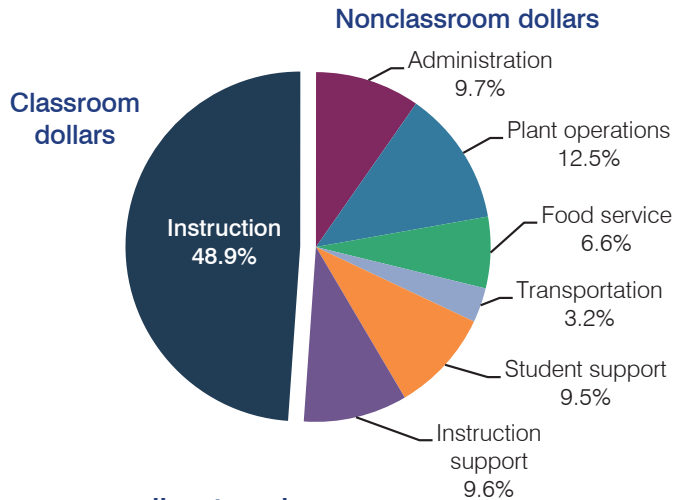
Sunnyside Unified School District

Pima County
 Efficiency peer groups 2 and T-1, Achievement peer group 7
 Legislative district(s): 2, 3 and 4

District size, location: Large, City
 Students attending: 16,638
 Number of schools: 21

OPERATIONAL EFFICIENCY

Spending by operational area



5-year spending trend

Total spending per pupil decreased by 16 percent. Spending in the classroom decreased from 55.2 to 48.9 percent. Overall, spending on instruction support increased substantially, spending on administration and plant operations increased, and spending on food service increased slightly. Spending on other nonclassroom areas remained fairly stable.

Cost measures relative to peer averages

Operational area	Measure	District	Peer average	State average
Administration	Cost per pupil	\$654	\$658	\$746
	Students per administrator	62	68	67
Plant operations	Cost per square foot	\$7.59	\$6.23	\$6.03
	Square footage per student	112	145	153
Food service	Cost per meal equivalent	\$2.62	\$2.58	\$2.58
Transportation	Cost per mile	\$2.99	\$6.28	\$3.55
	Cost per rider	\$559	\$582	\$1,015

Very low Low Comparable High Very high

Per pupil spending by operational area

	District		Peer average	State average	National average
	2012	2013	2013	2013	2011
Total	\$7,004	\$6,759	\$7,059	\$7,496	\$10,658
Classroom dollars	3,527	3,304	3,824	4,031	6,520
Nonclassroom dollars:	3,477	3,455	3,235	3,465	4,138
Administration	625	654	658	746	1,138
Plant operations	853	848	896	924	1,015
Food service	464	446	332	396	412
Transportation	202	216	351	369	452
Student support	673	643	524	582	593
Instruction support	660	648	474	448	528

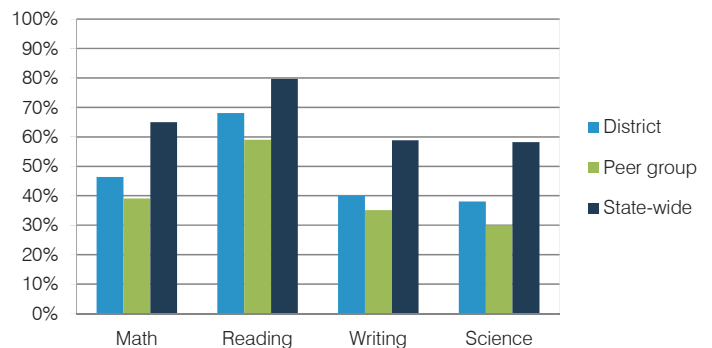
STUDENT ACHIEVEMENT, TEACHER MEASURES, AND FINANCIAL ASSESSMENT

ADE-reported district and school letter grades

District grade: **C**

Grade	Number of schools	Percentage of schools
A	0	0%
B	7	33%
C	6	29%
D	7	33%
F	0	0%
Not rated	1	5%

Students who met state standards (AIMS)



Student and teacher measures

Measure	District	Peer average	State average
Attendance rate	93%	92%	94%
Graduation rate (2012)	73%	69%	77%
Poverty rate (2012)	44%	42%	25%
Students per teacher	19.6	15.1	18.3
Average teacher salary	\$41,611	\$42,614	\$45,264
Amount from Proposition 301	\$3,979	\$3,663	\$3,784
Average years of teacher experience	11.2	12.2	10.9
Percentage of teachers in first 3 years	20%	15%	19%

Financial stress assessment

Overall financial stress level: **Moderate**

Measure: 2011 through 2013	Assessment
Number of students attending district	Steady
Spending exceeded operating/capital budgets	No overspending
Spending increase election results	Mixed election results
Operating reserve percentage (max. 4%), trend	2.7%, Increasing
Years of capital reserve held	Less than 1 year
Current financial and internal control status	Compliant

