

Sunnyside Unified School District

Pima County
Operational peer group: B
Legislative districts: 29

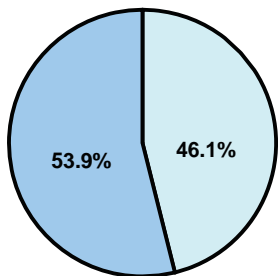
District size: Large
Students attending: 16,734
Number of schools: 22

OPERATIONAL EFFICIENCY

Average per-pupil spending

District
State

Classroom
\$4,306
\$4,497



Nonclassroom
\$3,685
\$3,411

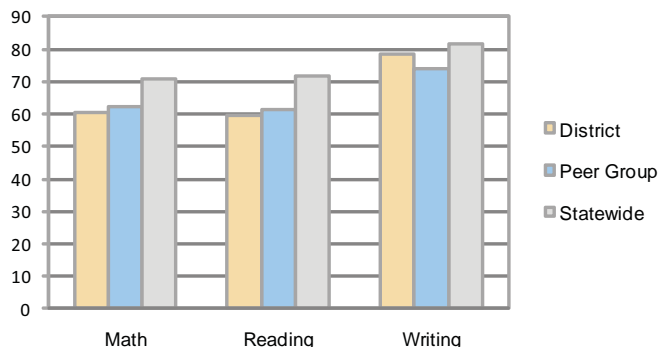
Total
\$7,991
\$7,908

5-year trend

Total spending per pupil increased by 20 percent. Spending in the classroom varied year to year and decreased significantly overall from 58.7 to 53.9 percent. Spending on student and instruction support increased significantly, while spending in other nonclassroom areas remained fairly stable.

STUDENT ACHIEVEMENT AND TEACHER INFORMATION

Percentage of students meeting state standards (AIMS)



Adequate Yearly Progress (AYP) toward federal goals

10 schools met all applicable AYP objectives for NCLB. 12 did not because they failed to meet 1 or more of the following: percentage of students tested (3); academic progress (11); attendance rate (2); graduation rate (2).

Student and teacher information

Measure	District	Peer average	State average
Attendance rate	94%	95%	95%
Graduation rate (2008)	64%	74%	75%
Poverty rate	34%	28%	19%
Student/teacher ratio	16.7	18.0	17.1
Average teacher salary	\$46,045	\$48,318	\$45,209
Average years' experience	10.6	8.9	8.3
Percent of teachers in first 3 years	30%	33%	16%

District's cost measures relative to peer group

Operational Area	Measure	District	Peer Average	State Average
Administration	Cost per pupil	\$642	\$634	\$729
	Students per administrator	66	67	66
Plant Operations	Cost per square foot	\$8.12	\$6.67	\$6.40
	Square footage per student	111	142	144
Food Service	Cost per meal equivalent	\$2.77	\$2.64	\$2.53
Transportation	Cost per mile	\$3.66	\$3.44	\$3.36
	Miles per rider	105	290	271

Very Low Low Comparable High Very High

Per-pupil spending by function

	District		Peer 2009	State 2009	National 2007
	2008	2009			
Total	\$8,014	\$7,991	\$7,523	\$7,908	\$9,683
Classroom dollars	\$4,421	\$4,306	\$4,247	\$4,497	\$5,903
Nonclassroom dollars:	\$3,593	\$3,685	\$3,276	\$3,411	\$3,780
Administration	628	642	634	729	1,050
Plant Operations	905	898	936	920	951
Food Service	461	445	310	382	369
Transportation	235	226	359	343	406
Student Support	756	812	571	594	512
Instruction Support	604	658	443	431	470
Other	4	4	23	12	22

Proposition 301

Teacher pay

On average, each teacher earned \$5,681 in additional salary, and each librarian, speech pathologist, counselor, nurse, and psychologist earned between \$1,059 and \$13,293.

Performance pay plan goals and results

Type of goal	Goal met?
Student achievement	▴
Dropout/ graduation rates	□
Student attendance	
Parent/student satisfaction	
Teacher attendance	■
Teacher professional development	■
Teacher evaluations	
Tutoring	
Other	

■ = yes, □ = no, and ▴ = partially