

# Classroom Dollars and Proposition 301 Results

## Superior Unified School District

Pinal County

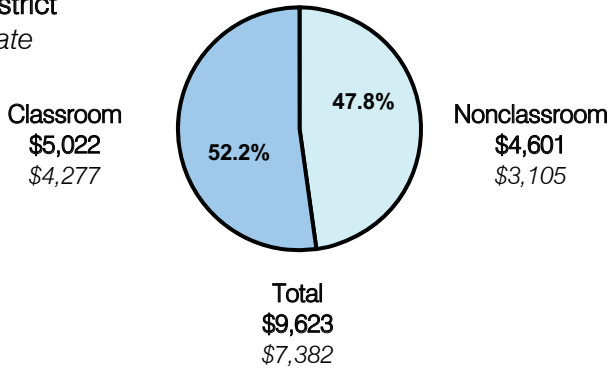
District size: Small  
 Students attending: 483  
 Number of schools: 3  
 Number of certified teachers: 35

### Classroom Dollars

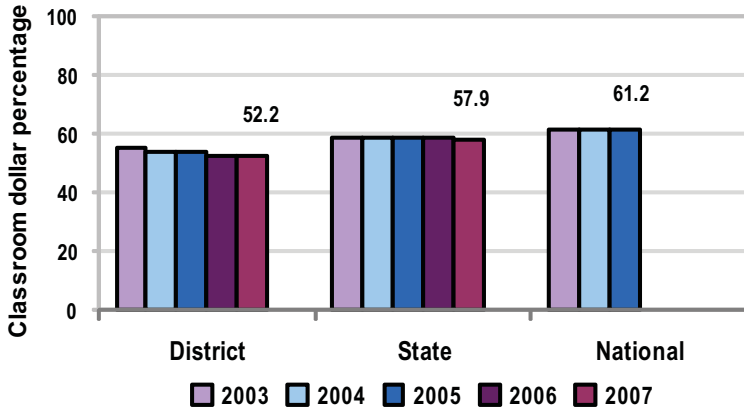
Fiscal year 2007 averages per pupil

District

State



5-year comparison



Expenditures by function

	District					State 2007	National 2005
	2003	2004	2005	2006	2007		
Classroom dollars	55.3	53.5	53.8	52.3	52.2	57.9	61.2
Nonclassroom dollars:							
Administration	14.8	15.1	13.6	13.4	14.5	9.5	11.0
Plant operations	14.7	13.8	15.0	16.3	16.3	11.3	9.6
Food service	5.0	5.0	5.1	5.4	5.5	4.7	3.9
Transportation	4.0	3.8	3.1	3.7	3.7	4.3	4.1
Student support	2.8	4.4	3.6	3.7	4.5	7.3	5.2
Instruction support	3.4	4.4	5.7	5.2	3.3	4.8	4.8
Other			0.1			0.2	0.2

### Comparative Information

	District			State 2007
	2005	2006	2007	
Student/teacher ratio	13.3	14.1	13.7	17.4
Average teacher salary	\$37,456	\$38,222	\$40,574	\$43,833
Average years' experience	8.7	9.4	9.0	8.1

Classroom dollar ranking: 159 of 229 districts.

### Proposition 301

#### District-reported 2007 results

##### Teacher pay

- On average, each teacher, librarian, and counselor earned between \$4,250 through \$4,497 in additional salary.

##### Performance

- The District accomplished its goals, which were based on school performance.
- Students' writing and math skills improved based on pre- and post-test results.

##### Menu

- Eligible employees were compensated for extra duties. 5 teachers were compensated for attending conferences, 7 teachers participated in AIMS intervention tutoring, 2 teachers participated in dropout prevention programs, and 23 teachers attended SEI training.