

# Tempe Elementary School District

Maricopa County

Efficiency peer groups 7 and T-1, Achievement peer group 13<sup>1</sup>

Legislative district(s): 18, 26, and 27

District size, location:

Large, City

Students attending:

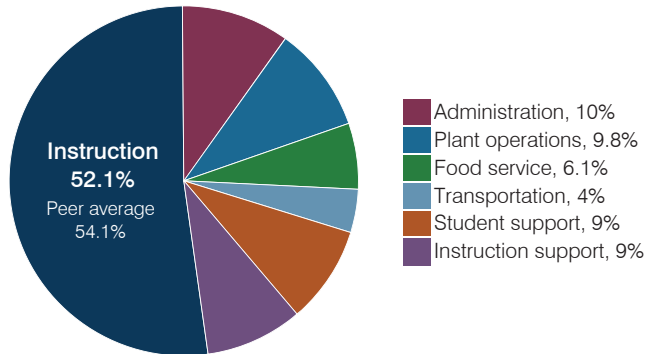
11,049

Number of schools:

21

## OPERATIONAL EFFICIENCY

### Spending by operational area



### Efficiency measures relative to peer averages

Operational area	Measure	District	Peer average	State average
Administration	Cost per pupil	\$901	\$796	\$844
	Students per administrative position	58	75	67
Plant operations	Cost per square foot	\$5.70	\$6.23	\$6.30
	Square footage per student	156	135	155
Food service	Cost per meal	\$3.11	\$2.77	\$2.88
Transportation	Cost per mile	\$4.83	\$6.81	\$3.84
	Cost per rider	\$719	\$942	\$1,198

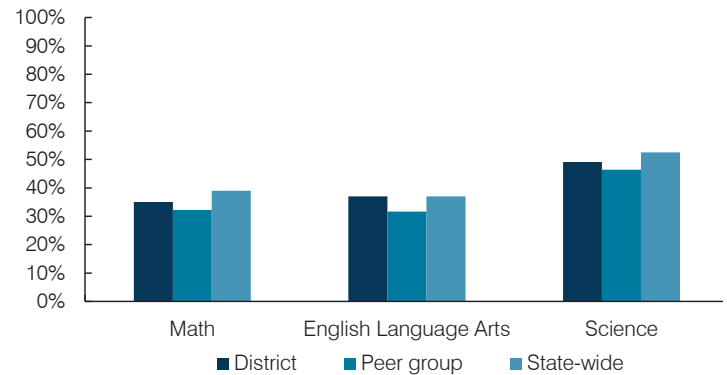
Very low   Low   Comparable   High   Very high

### Per pupil spending

Spending by area	District		Peer average 2017	State average 2017
	2016	2017		
Instruction	\$ 4,577	\$ 4,700	\$ 4,304	\$ 4,377
Administration	851	901	796	844
Plant operations	911	889	837	977
Food service	536	550	566	422
Transportation	362	357	303	381
Student support	765	814	671	679
Instruction support	709	809	511	461
<b>Total operational</b>	<b>\$ 8,711</b>	<b>\$ 9,020</b>	<b>\$ 7,988</b>	<b>\$ 8,141</b>
Land and buildings	\$ 1,574	\$ 1,491	\$ 499	\$ 691
Equipment	597	291	357	424
Interest	373	375	361	236
Other	84	122	168	161
<b>Total nonoperational</b>	<b>\$ 2,628</b>	<b>\$ 2,279</b>	<b>\$ 1,385</b>	<b>\$ 1,512</b>
<b>Total per pupil spending</b>	<b>\$ 11,339</b>	<b>\$ 11,299</b>	<b>\$ 9,373</b>	<b>\$ 9,653</b>

## STUDENT ACHIEVEMENT, STUDENT AND TEACHER MEASURES, AND REVENUES

### Students who passed state assessments



### Student and teacher measures

Measure	District	Peer average	State average
Attendance rate	95%	94%	94%
Graduation rate (2016)	N/A	N/A	N/A
Poverty rate (2016)	28%	25%	22%
Special education population	12%	12%	12%
Students per teacher	15.1	19.1	18.5
Average teacher salary	\$40,899	\$43,084	\$48,372
Amount from Prop 301	\$4,894	\$4,885	\$5,840
Average years of teacher experience	9.3	8.3	11.3
Percentage of teachers in first 3 years	26%	30%	19%

### Per pupil revenues

Revenues by source	District		Peer average 2017	State average 2017
	2016	2017		
Federal	\$ 1,283	\$ 1,446	\$ 1,522	\$ 1,318
State	2,933	3,053	4,236	3,831
Local	6,937	7,013	3,488	4,443
<b>Total per pupil revenues</b>	<b>\$ 11,153</b>	<b>\$ 11,512</b>	<b>\$ 9,246</b>	<b>\$ 9,592</b>

#### Select revenues from common sources

	District 2016	District 2017	Peer average	State average
Equalization formula funding	\$ 5,116	\$ 5,178	\$ 5,133	\$ 5,503
Amount from Prop 123	235	239	235	245
Prop 123 additional funding	43	43	44	46
Grants	1,278	1,552	1,543	1,185
Donations and tax credits	51	54	45	89

#### Select revenues from less common sources

	District 2016	District 2017	Number of peers receiving
Desegregation	\$ 1,118	\$ 1,040	4 of 10
Small school adjustment	0	0	0 of 10
Federal impact aid	0	0	2 of 10
Voter-approved levy increases	2,606	2,670	10 of 10

<sup>1</sup> See Appendix A for information such as districts included in each peer group and Appendix B for sources and methodology.

**Instructional spending percentage**

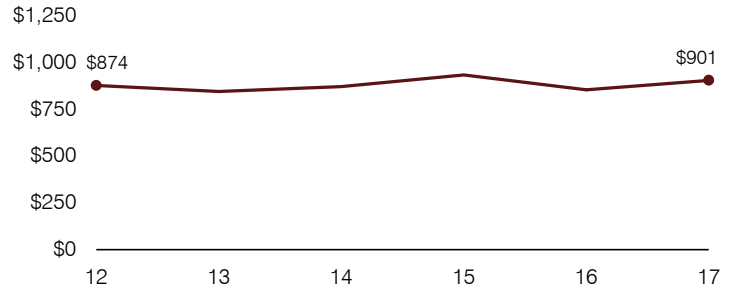
Year:	2001	2002	2003	2004	2005	2006	2007	2008	2009	2010	2011	2012	2013	2014	2015	2016	2017
Percentage:	55.7	54.9	55.6	56.3	55.9	55.5	55.4	55.3	56.0	54.2	53.6	52.7	52.3	53.4	52.8	52.5	52.1

**OPERATIONAL TRENDS AND FINANCIAL STRESS ASSESSMENT**  
Fiscal years as indicated

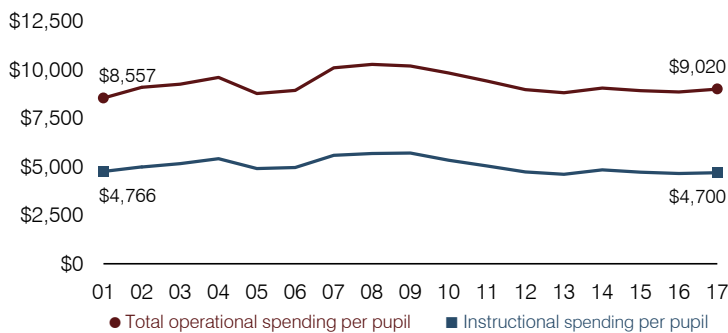
**5-year spending trend (2012 through 2017)**

Total operational spending per pupil, adjusted for inflation, returned to 2012 levels. The percentage of dollars spent on instruction decreased slightly overall from 52.7 to 52.1 percent. Overall, as a percentage of total operational spending, food service and instruction support increased and student support increased slightly, while plant operations decreased and transportation decreased slightly.

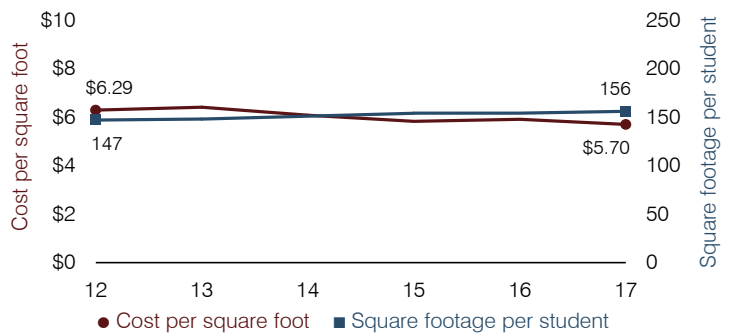
**Administrative cost per pupil**



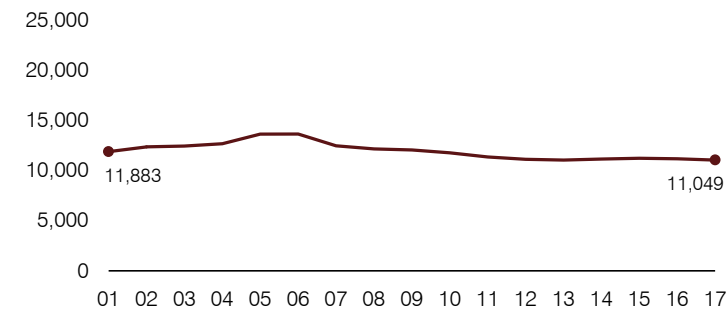
**Total operational and instructional spending per pupil (inflation adjusted to 2017 dollars)**



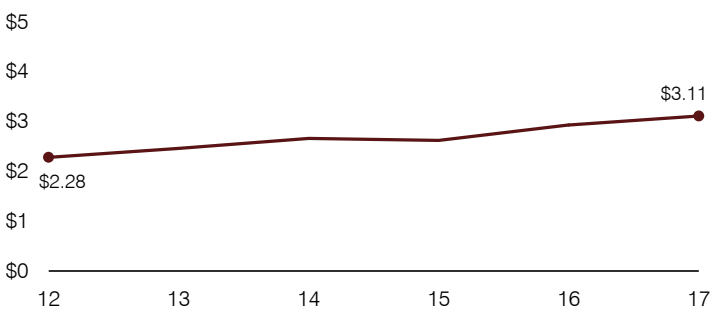
**Plant cost per square foot and square footage per student**



**Students attending**



**Food service cost per meal**



**Financial stress assessment**

Overall financial stress level: **Low**

Measure: 2015 through 2017	Assessment
Change in number of district students	Steady
Spending exceeded operating/capital budgets	No overspending
Spending increase election results	Voter-approved
Operating reserve percentage, Trend	5.0%, Varying
Years of capital reserve held	More than 3 years
Current financial and internal control status	Compliant

Low
Moderate
High

**Transportation costs per mile and per rider**

