

# Classroom Dollars and Proposition 301 Results

## Tempe Elementary School District

Maricopa County

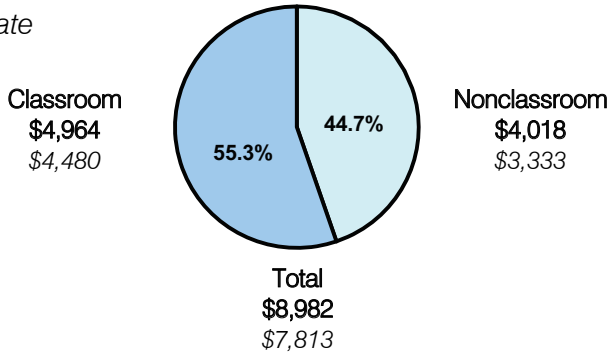
District size: Large  
 Students attending: 12,156  
 Number of schools: 24  
 Number of certified teachers: 893

### Classroom Dollars

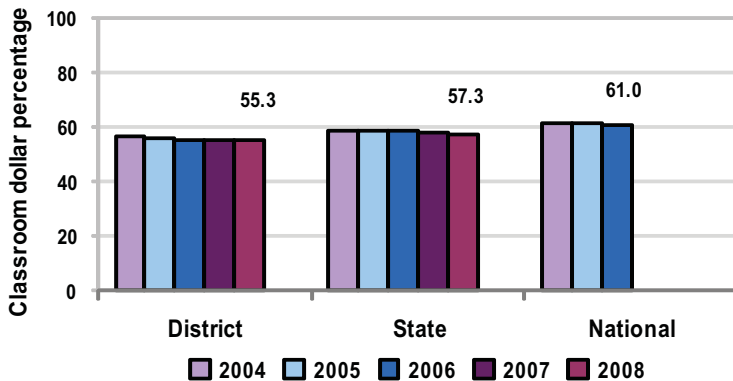
Fiscal year 2008 averages per pupil

District

State



5-year comparison



### Expenditures by function

	District					State 2008	National 2006
	2004	2005	2006	2007	2008		
Classroom dollars	56.3	55.9	55.5	55.4	55.3	57.3	61.0
Nonclassroom dollars:							
Administration	9.6	9.0	9.4	9.1	9.5	9.2	10.8
Plant operations	11.7	11.8	10.9	11.0	10.4	11.3	9.9
Food service	4.5	4.8	5.5	5.6	5.2	4.8	3.8
Transportation	3.5	3.7	3.8	4.0	4.0	4.4	4.2
Student support	7.7	7.9	8.1	8.0	7.7	7.4	5.2
Instruction support	6.7	6.9	6.8	6.9	7.9	5.4	4.9
Other						0.2	0.2

### Comparative Information

	District			State
	2006	2007	2008	2008
Student/teacher ratio	15.1	13.6	13.6	17.3
Average teacher salary	\$42,190	\$44,353	\$42,851	\$44,967
Average years' experience	7.5	7.6	7.6	8.1

Classroom dollar ranking: 113 of 230 districts.

### Proposition 301

#### District-reported 2008 results

##### Teacher pay

- On average, each teacher, librarian, and counselor earned an additional \$6,200 in salary, and each teacher curriculum specialist received an additional \$2,239.

##### Performance

- The District accomplished its goals, which were the same as the prior fiscal year's goals and were based on district and individual performance.
- Student achievement data increased over the prior year.
- Student attendance was above 94 percent.
- 96 percent of parents participating in a satisfaction survey rated schools as satisfactory.
- Teachers developed professional investment plans, which included various components such as committee work, staff development, coordination, and acting as a liaison.

##### Menu

- Monies were used solely to increase eligible employee compensation.