

Tempe Union High School District

Maricopa County
Peer groups: Efficiency Group 2, Achievement Group 9
Legislative district(s): 16, 17, 18 and 20

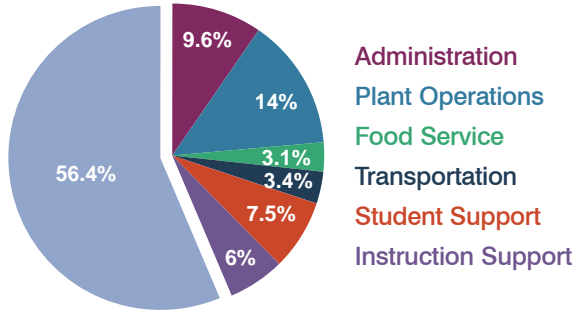
District size: Large
Students attending: 13,688
Number of schools: 7

OPERATIONAL EFFICIENCY

Spending by operational area

Classroom dollars

Nonclassroom dollars

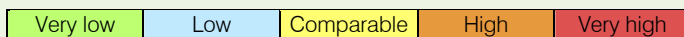


5-year trend

Total spending per pupil increased by 7 percent. Spending in the classroom decreased significantly from 59.6 to 56.4 percent. Overall, spending on plant operations and transportation increased, while spending on all other nonclassroom areas remained fairly stable.

District's cost measures relative to peer group

Operational Area	Measure	District	Peer Average	State Average
Administration	Cost per pupil	\$685	\$611	\$728
	Students per administrator	79	70	66
Plant Operations	Cost per square foot	\$5.90	\$6.25	\$6.10
	Square footage per student	170	147	152
Food Service	Cost per meal equivalent	\$2.97	\$2.59	\$2.45
Transportation	Cost per mile	\$4.17	\$3.34	\$3.39
	Miles per rider	243	324	283



Per-pupil spending by operational area

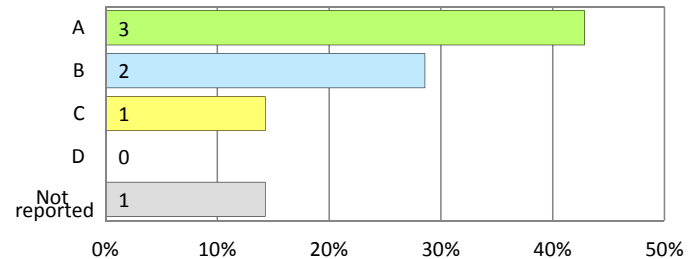
	District		Peer 2011	State 2011	National 2009
	2010	2011			
Total	\$7,208	\$7,155	\$6,961	\$7,485	\$10,591
Classroom dollars	\$4,087	\$4,032	\$3,867	\$4,098	\$6,456
Nonclassroom dollars:	\$3,121	\$3,123	\$3,094	\$3,387	\$4,135
Administration	684	685	611	728	1,147
Plant Operations	985	1,004	909	927	1,033
Food Service	233	223	304	375	404
Transportation	212	245	333	352	443
Student Support	569	540	518	571	573
Instruction Support	438	426	419	434	535

STUDENT ACHIEVEMENT AND TEACHER INFORMATION

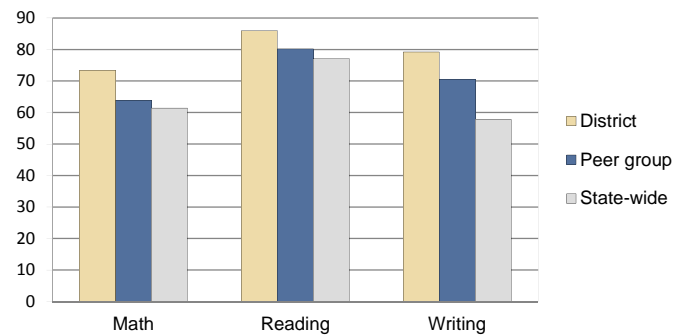
District and school letter grades

District grade: **B**

School grades (number and percentage):



Percentage of students meeting state standards (AIMS)



Student and teacher information

Measure	District	Peer Average	State Average
Attendance rate	97%	95%	95%
Graduation rate (2010)	91%	86%	78%
Poverty rate (2010)	13%	16%	22%
Students per teacher	21.7	20.4	18.1
Average teacher salary	\$51,413	\$44,754	\$45,637
Average years of experience	11.7	9.2	10.9
Percent of teachers in first 3 years	12%	17%	16%

Proposition 301 pay, goals, and results

Average additional salary earned by teachers: \$4,195

Type of goal	Goal met?
Student achievement	-
Dropout/graduation rates	-
Student attendance	-
Parent/student satisfaction	-
Teacher attendance	-
Teacher professional development	▀
Teacher evaluations	-
Tutoring	-
Other	▀

▀ = yes, □ = no, ▀ = partially, and - = no goal set