

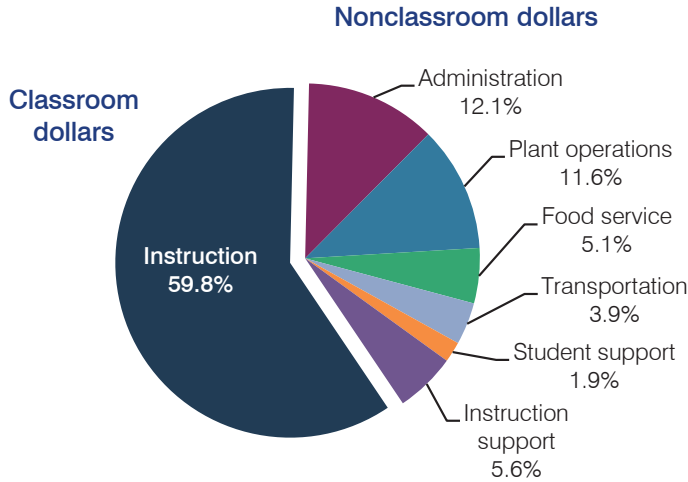
# Thatcher Unified School District

Graham County  
 Efficiency peer groups 5 and T-6, Achievement peer group 5  
 Legislative district(s): 14

District size, location: Medium, Town  
 Students attending: 1,521  
 Number of schools: 4

## OPERATIONAL EFFICIENCY

### Spending by operational area



### 5-year spending trend

Total spending per pupil decreased by 15 percent. Spending in the classroom decreased overall from 62.2 to 59.8 percent. Overall, spending on instruction support increased substantially, spending on food service increased slightly, and spending on other nonclassroom areas remained fairly stable.

### Cost measures relative to peer averages

Operational area	Measure	District	Peer average	State average
Administration	Cost per pupil	\$686	\$1,077	\$746
	Students per administrator	73	56	67
Plant operations	Cost per square foot	\$3.63	\$4.83	\$6.03
	Square footage per student	182	260	153
Food service	Cost per meal equivalent	\$3.69	\$3.14	\$2.58
Transportation	Cost per mile	\$2.92	\$3.58	\$3.55
	Cost per rider	\$434	\$462	\$1,015

Very low   Low   Comparable   High   Very high

### Per pupil spending by operational area

	District		Peer average	State average	National average
	2012	2013	2013	2013	2011
<b>Total</b>	<b>\$5,531</b>	<b>\$5,687</b>	<b>\$8,465</b>	<b>\$7,496</b>	<b>\$10,658</b>
<b>Classroom dollars</b>	<b>3,192</b>	<b>3,401</b>	<b>4,259</b>	<b>4,031</b>	<b>6,520</b>
<b>Nonclassroom dollars:</b>	<b>2,339</b>	<b>2,286</b>	<b>4,206</b>	<b>3,465</b>	<b>4,138</b>
Administration	750	686	1,077	746	1,138
Plant operations	586	661	1,237	924	1,015
Food service	289	289	419	396	412
Transportation	248	221	535	369	452
Student support	182	107	630	582	593
Instruction support	284	322	308	448	528

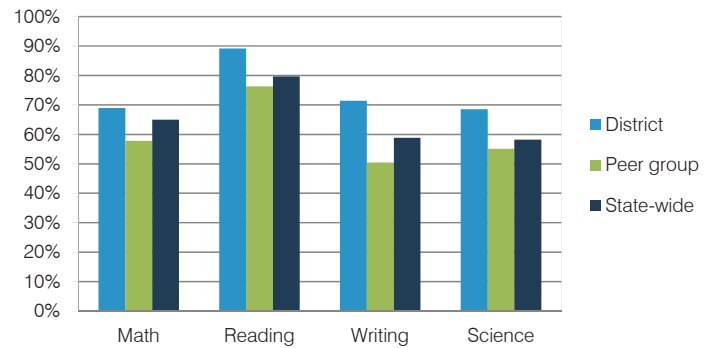
## STUDENT ACHIEVEMENT, TEACHER MEASURES, AND FINANCIAL ASSESSMENT

### ADE-reported district and school letter grades

District grade: **B**

Grade	Number of schools	Percentage of schools
A	1	25%
B	3	75%
C	0	0%
D	0	0%
F	0	0%
Not rated	0	0%

### Students who met state standards (AIMS)



### Student and teacher measures

Measure	District	Peer average	State average
Attendance rate	95%	94%	94%
Graduation rate (2012)	90%	83%	77%
Poverty rate (2012)	21%	24%	25%
Students per teacher	19.8	16.6	18.3
Average teacher salary	\$38,850	\$41,866	\$45,264
Amount from Proposition 301	\$5,212	\$4,192	\$3,784
Average years of teacher experience	13.5	11.7	10.9
Percentage of teachers in first 3 years	12%	16%	19%

### Financial stress assessment

Overall financial stress level: **Low**

Measure: 2011 through 2013

Measure	Assessment
Number of students attending district	Increase
Spending exceeded operating/capital budgets	No overspending
Spending increase election results	Voter-approved
Operating reserve percentage (max. 4%), trend	4.0%, Steady
Years of capital reserve held	More than 3 years
Current financial and internal control status	Compliant

Stress level

