

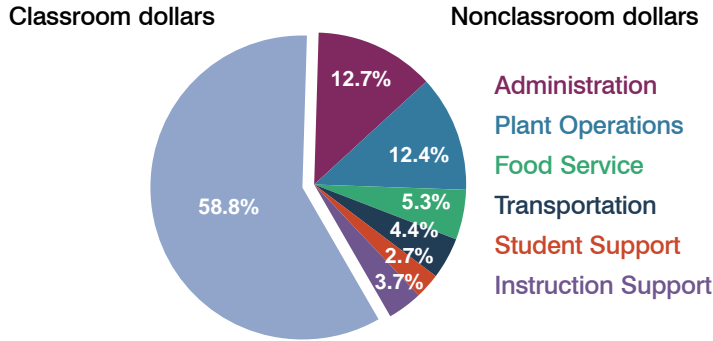
# Thatcher Unified School District

Graham County  
Peer groups: Efficiency Group 5, Achievement Group 6  
Legislative district(s): 5

District size: Medium  
Students attending: 1,332  
Number of schools: 4

## OPERATIONAL EFFICIENCY

### Spending by operational area



### 5-year trend

Total spending per pupil decreased by 1 percent. Spending in the classroom varied year to year, decreasing overall from 59.9 to 58.8 percent. Spending on student support increased, while spending on other nonclassroom areas varied year to year.

### District's cost measures relative to peer group

Operational Area	Measure	District	Peer Average	State Average
Administration	Cost per pupil	\$715	\$1,104	\$728
	Students per administrator	65	56	66
Plant Operations	Cost per square foot	\$3.34	\$4.74	\$6.10
	Square footage per student	209	259	152
Food Service	Cost per meal equivalent	\$3.12	\$2.98	\$2.45
Transportation	Cost per mile	\$3.21	\$2.71	\$3.39
	Miles per rider	147	336	283

Very low Low Comparable High Very high

### Per-pupil spending by operational area

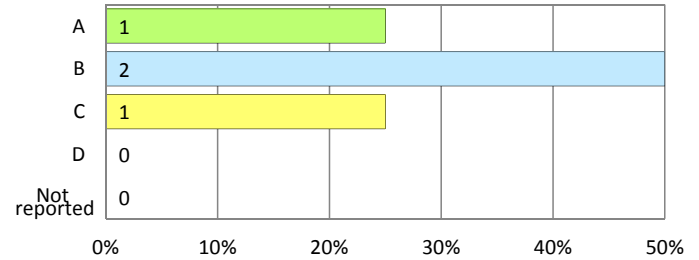
	District		Peer 2011	State 2011	National 2009
	2010	2011			
<b>Total</b>	<b>\$6,099</b>	<b>\$5,616</b>	<b>\$8,531</b>	<b>\$7,485</b>	<b>\$10,591</b>
<b>Classroom dollars</b>	<b>\$3,707</b>	<b>\$3,304</b>	<b>\$4,298</b>	<b>\$4,098</b>	<b>\$6,456</b>
<b>Nonclassroom dollars:</b>	<b>\$2,392</b>	<b>\$2,312</b>	<b>\$4,233</b>	<b>\$3,387</b>	<b>\$4,135</b>
Administration	803	715	1,104	728	1,147
Plant Operations	747	698	1,213	927	1,033
Food Service	293	295	421	375	404
Transportation	244	246	527	352	443
Student Support	171	149	651	571	573
Instruction Support	134	209	317	434	535

## STUDENT ACHIEVEMENT AND TEACHER INFORMATION

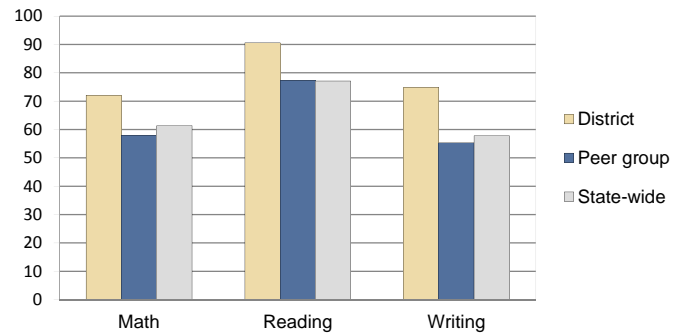
### District and school letter grades

District grade: **B**

### School grades (number and percentage):



### Percentage of students meeting state standards (AIMS)



### Student and teacher information

Measure	District	Peer Average	State Average
Attendance rate	96%	94%	95%
Graduation rate (2010)	90%	82%	78%
Poverty rate (2010)	23%	24%	22%
Students per teacher	19.3	17.3	18.1
Average teacher salary	\$39,752	\$41,429	\$45,637
Average years of experience	13.7	12.6	10.9
Percent of teachers in first 3 years	9%	12%	16%

### Proposition 301 pay, goals, and results

Average additional salary earned by teachers: \$4,427

Type of goal	Goal met?
Student achievement	■
Dropout/graduation rates	-
Student attendance	-
Parent/student satisfaction	-
Teacher attendance	-
Teacher professional development	-
Teacher evaluations	-
Tutoring	-
Other	-

■ = yes, □ = no, ▴ = partially, and - = no goal set