

# Thatcher Unified School District

Graham County  
Operational peer group: E  
Legislative districts: 5

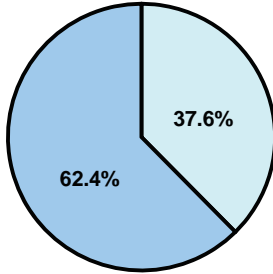
District size: Medium  
Students attending: 1,268  
Number of schools: 4

## OPERATIONAL EFFICIENCY

### Average per-pupil spending

District  
State

Classroom  
\$4,140  
\$4,497



Nonclassroom  
\$2,493  
\$3,411

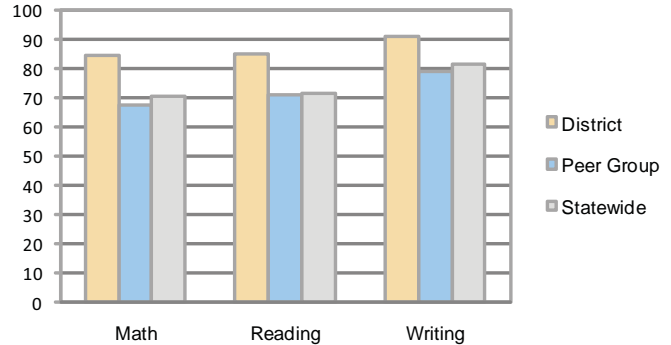
Total  
\$6,633  
\$7,908

### 5-year trend

Total spending per pupil increased by 17 percent. Spending in the classroom varied year to year and increased significantly overall from 56.6 to 62.4 percent. Spending on administration and instruction support decreased significantly, while spending in other nonclassroom areas remained fairly stable.

## STUDENT ACHIEVEMENT AND TEACHER INFORMATION

### Percentage of students meeting state standards (AIMS)



### Adequate Yearly Progress (AYP) toward federal goals

4 schools met all applicable AYP objectives for NCLB.

### Student and teacher information

Measure	District	Peer average	State average
Attendance rate	96%	95%	95%
Graduation rate (2008)	90%	70%	75%
Poverty rate	14%	15%	19%
Student/teacher ratio	17.6	16.8	17.1
Average teacher salary	\$42,192	\$42,842	\$45,209
Average years' experience	12.9	10.1	8.3
Percent of teachers in first 3 years	15%	24%	16%

### District's cost measures relative to peer group

Operational Area	Measure	District	Peer Average	State Average
Administration	Cost per pupil	\$816	\$1,148	\$729
	Students per administrator	63	51	66
Plant Operations	Cost per square foot	\$3.75	\$5.49	\$6.40
	Square footage per student	219	253	144
Food Service	Cost per meal equivalent	\$3.31	\$3.07	\$2.53
Transportation	Cost per mile	\$3.11	\$2.53	\$3.36
	Miles per rider	134	359	271

Very Low Low Comparable High Very High

### Per-pupil spending by function

	District		Peer	State	National
	2008	2009	2009	2009	2007
<b>Total</b>	<b>\$6,706</b>	<b>\$6,633</b>	<b>\$9,562</b>	<b>\$7,908</b>	<b>\$9,683</b>
<b>Classroom dollars</b>	<b>\$4,173</b>	<b>\$4,140</b>	<b>\$4,925</b>	<b>\$4,497</b>	<b>\$5,903</b>
<b>Nonclassroom dollars:</b>	<b>\$2,533</b>	<b>\$2,493</b>	<b>\$4,637</b>	<b>\$3,411</b>	<b>\$3,780</b>
Administration	820	816	1,148	729	1,050
Plant Operations	835	822	1,379	920	951
Food Service	300	302	444	382	369
Transportation	274	256	554	343	406
Student Support	139	146	749	594	512
Instruction Support	138	124	356	431	470
Other	27	27	7	12	22

### Proposition 301

#### Teacher pay

On average, each teacher earned \$6,243 in additional salary, and the librarian and each counselor earned between \$2,477 and \$6,467.

#### Performance pay plan goals and results

Type of goal	Goal met?
Student achievement	■
Dropout/ graduation rates	
Student attendance	
Parent/student satisfaction	
Teacher attendance	
Teacher professional development	
Teacher evaluations	
Tutoring	
Other	

■ = yes, □ = no, and ▴ = partially