

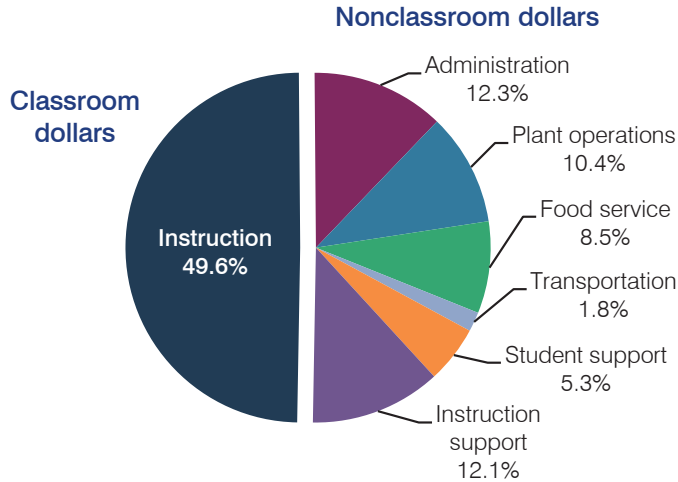
Tolleson Elementary School District

Maricopa County
 Efficiency peer groups 8 and T-2, Achievement peer group 14
 Legislative district(s): 19

District size, location: Medium-Large, Suburb
 Students attending: 2,534
 Number of schools: 4

OPERATIONAL EFFICIENCY

Spending by operational area



5-year spending trend

Total spending per pupil increased by 5 percent. Spending in the classroom varied year to year, decreasing overall from 52.3 to 49.6 percent. Overall, spending on instruction support increased substantially and spending on food service increased slightly, while spending on administration decreased substantially and spending on student support decreased.

Cost measures relative to peer averages

Operational area	Measure	District	Peer average	State average
Administration	Cost per pupil	\$895	\$791	\$746
	Students per administrator	77	69	67
Plant operations	Cost per square foot	\$5.83	\$6.28	\$6.03
	Square footage per student	130	138	153
Food service	Cost per meal equivalent	\$2.37	\$2.54	\$2.58
Transportation	Cost per mile	\$5.73	\$5.18	\$3.55
	Cost per rider	\$748	\$824	\$1,015

Very low Low Comparable High Very high

Per pupil spending by operational area

	District		Peer average	State average	National average
	2012	2013	2013	2013	2011
Total	\$6,572	\$7,277	\$7,193	\$7,496	\$10,658
Classroom dollars	3,302	3,609	3,672	4,031	6,520
Nonclassroom dollars:	3,270	3,668	3,521	3,465	4,138
Administration	952	895	791	746	1,138
Plant operations	709	759	842	924	1,015
Food service	574	618	541	396	412
Transportation	135	133	273	369	452
Student support	452	382	541	582	593
Instruction support	448	881	533	448	528

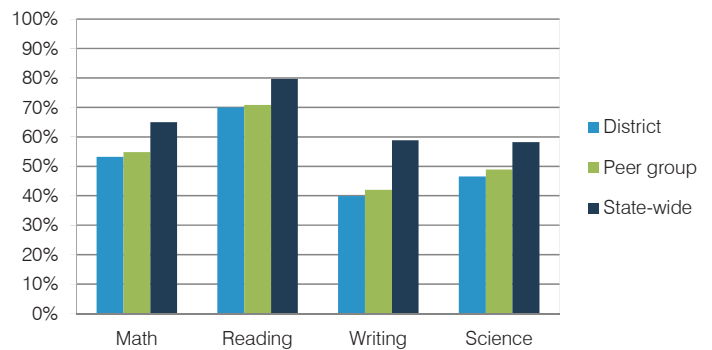
STUDENT ACHIEVEMENT, TEACHER MEASURES, AND FINANCIAL ASSESSMENT

ADE-reported district and school letter grades

District grade: **C**

Grade	Number of schools	Percentage of schools
A	0	0%
B	2	50%
C	2	50%
D	0	0%
F	0	0%
Not rated	0	0%

Students who met state standards (AIMS)



Student and teacher measures

Measure	District	Peer average	State average
Attendance rate	94%	95%	94%
Graduation rate (2012)	N/A	N/A	N/A
Poverty rate (2012)	31%	37%	25%
Students per teacher	18.2	17.1	18.3
Average teacher salary	\$42,544	\$42,646	\$45,264
Amount from Proposition 301	\$1,997	\$2,598	\$3,784
Average years of teacher experience	8.8	9.5	10.9
Percentage of teachers in first 3 years	27%	24%	19%

Financial stress assessment

Overall financial stress level: **Moderate**

Measure: 2011 through 2013

Measure	Assessment
Number of students attending district	Steady
Spending exceeded operating/capital budgets	Operating and capital
Spending increase election results	Voter-approved
Operating reserve percentage (max. 4%), trend	1.3%, Increasing
Years of capital reserve held	1 to 3 years
Current financial and internal control status	Compliant

Stress level

