

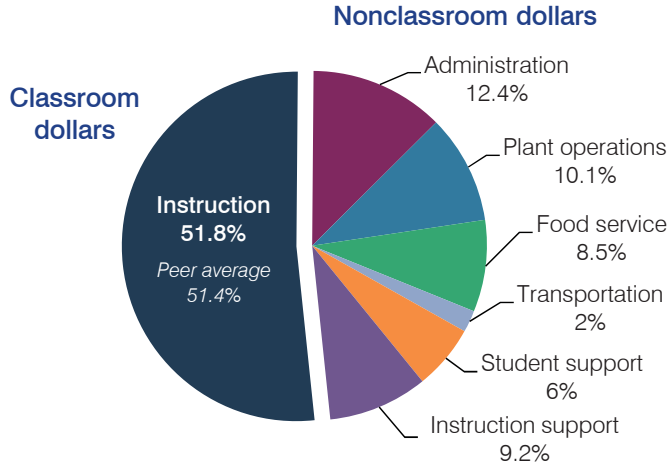
# Tolleson Elementary School District

Maricopa County  
 Efficiency peer groups 8 and T-1, Achievement peer group 14  
 Legislative district(s): 19

District size, location: Medium-large, City  
 Students attending: 2,807  
 Number of schools: 4

## OPERATIONAL EFFICIENCY

### Spending by operational area



### Efficiency measures relative to peer averages

Operational area	Measure	District	Peer average	State average
Administration	Cost per pupil	\$900	\$918	\$780
	Students per administrative position	76	70	67
Plant operations	Cost per square foot	\$5.22	\$6.18	\$6.09
	Square footage per student	140	140	153
Food service	Cost per meal equivalent	\$2.28	\$2.61	\$2.79
Transportation	Cost per mile	\$6.11	\$6.37	\$3.66
	Cost per rider	\$1,087	\$837	\$1,071

Very low   Low   Comparable   High   Very high

### Per pupil spending

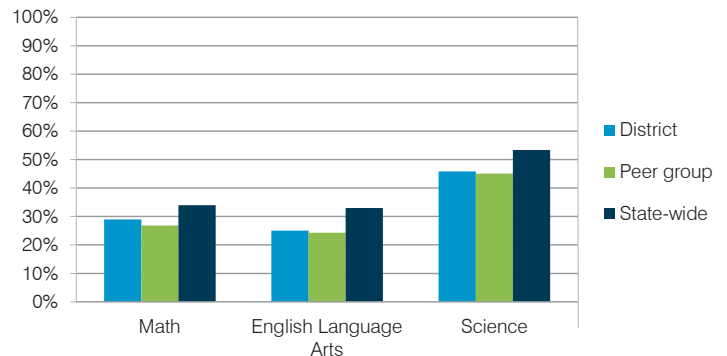
Spending by area	District		Peer average	State average
	2014	2015	2015	2015
Instruction	\$ 3,611	\$ 3,754	\$ 3,933	\$ 4,105
Administration	855	900	918	780
Plant operations	747	730	851	930
Food service	630	620	592	417
Transportation	162	145	295	371
Student support	419	432	564	613
Instruction support	684	668	484	442
<b>Total operational</b>	<b>\$ 7,108</b>	<b>\$ 7,249</b>	<b>\$ 7,637</b>	<b>\$ 7,658</b>
Land and buildings	\$ 1,056	\$ 348	\$ 1,094	\$ 641
Equipment	440	213	412	383
Interest	163	139	239	225
Other	213	271	136	150
<b>Total nonoperational</b>	<b>\$ 1,872</b>	<b>\$ 971</b>	<b>\$ 1,881</b>	<b>\$ 1,399</b>
<b>Total per pupil spending</b>	<b>\$ 8,980</b>	<b>\$ 8,220</b>	<b>\$ 9,518</b>	<b>\$ 9,057</b>

## STUDENT AND TEACHER MEASURES, FINANCIAL ASSESSMENT, AND REVENUE

### Student and teacher measures

Measure	District	Peer average	State average
Attendance rate	94%	94%	94%
Graduation rate (2014)	N/A	N/A	N/A
Poverty rate (2014)	33%	36%	23%
Students per teacher	18.6	17.5	18.6
Average teacher salary	\$40,905	\$42,232	\$46,008
Average years of teacher experience	9.1	9.1	11.0
Percentage of teachers in first 3 years	27%	30%	20%

### Students who met state standards



### Financial stress assessment

Overall financial stress level: **Low**

Measure: 2013 through 2015	Assessment
Change in number of district students	Increase
Spending exceeded operating/capital budgets	No overspending
Spending increase election results	No election held
Operating reserve percentage (max. 4%), trend	3.8%, Steady
Years of capital reserve held	More than 3 years
Current financial and internal control status	Compliant

Low   Moderate   High

### Per pupil revenues

Revenues by source	District		Peer average	State average
	2014	2015	2015	2015
Federal	\$ 1,325	\$ 1,593	\$ 1,698	\$ 1,299
State	3,897	4,038	3,607	3,517
Local	2,851	2,910	4,048	4,248
<b>Total revenues per pupil</b>	<b>\$ 8,073</b>	<b>\$ 8,541</b>	<b>\$ 9,353</b>	<b>\$ 9,064</b>
<b>Select revenues from common sources</b>				
Equalization formula funding	\$ 5,045	\$ 4,726	\$ 4,908	\$ 5,303
Grants	1,566	1,986	1,782	1,167
Donations and tax credits	16	14	46	78
<b>Select revenues from less common sources</b>				
			<b>Number of peers receiving</b>	
Desegregation	\$ 0	\$ 0	4 of 19	
Small school adjustment	0	0	0 of 19	
Federal impact aid	0	0	0 of 19	
Voter-approved levy increases	1,205	1,388	19 of 19	

# Tolleson ESD—page 2

## Classroom dollar percentage

Year:	2001	2002	2003	2004	2005	2006	2007	2008	2009	2010	2011	2012	2013	2014	2015
Percentage:	54.9	57.7	56.9	57.1	57.2	53.5	54.9	52.3	54.8	55.1	56.5	50.2	49.6	50.8	51.8

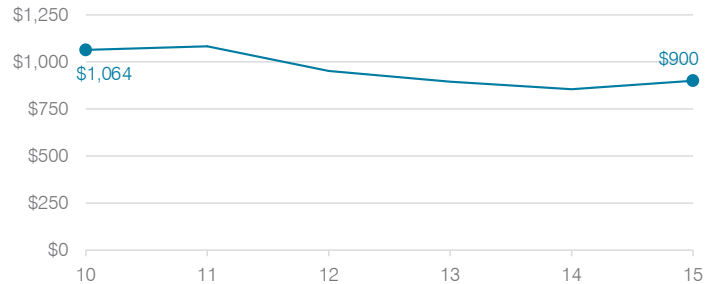
## OPERATIONAL TRENDS

Fiscal years as indicated

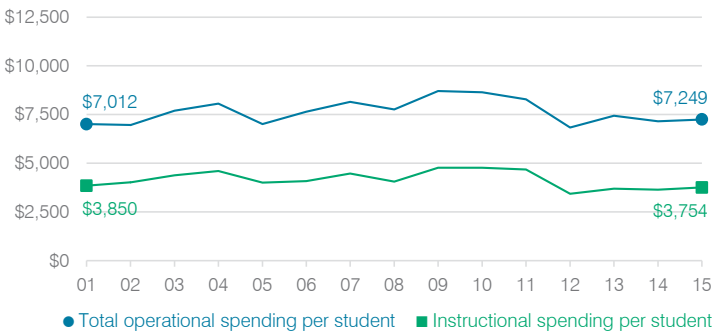
### 5-year spending trend (2010 through 2015)

Total operational spending per pupil, adjusted for inflation, decreased by 16 percent. The percentage of dollars spent in the classroom varied year to year, decreasing overall from 55.1 to 51.8 percent. Overall, as a percentage of total operational spending, instructional support increased substantially and plant operations and food service increased. Administration decreased and student support decreased slightly.

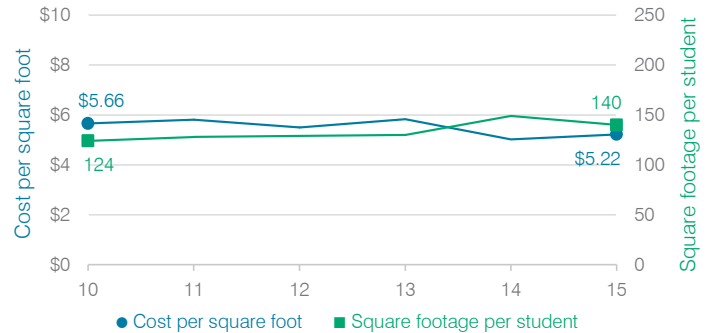
### Administrative cost per student



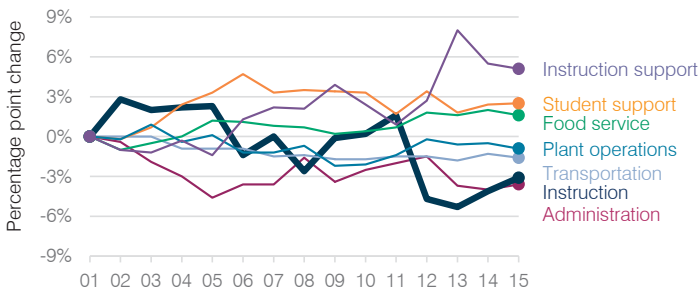
### Total operational and instructional spending per student (inflation adjusted to 2015 dollars)



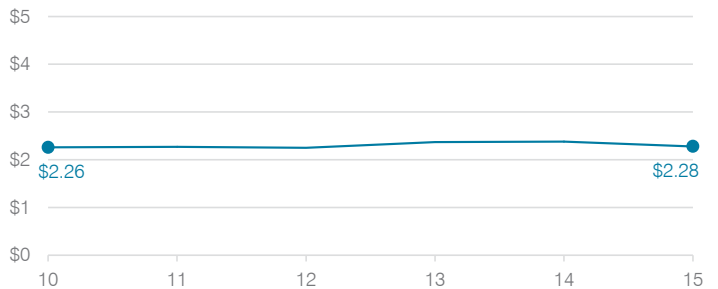
### Plant cost per square foot and square footage per student



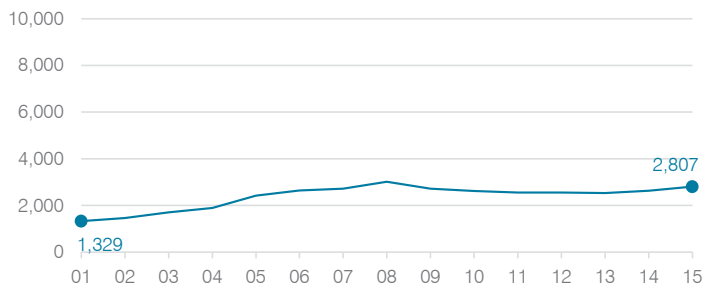
### Changes in operational spending percentages



### Food service cost per meal



### Students attending



### Transportation costs per mile and per rider

