

Classroom Dollars and Proposition 301 Results

Tolleson Union High School District

Maricopa County

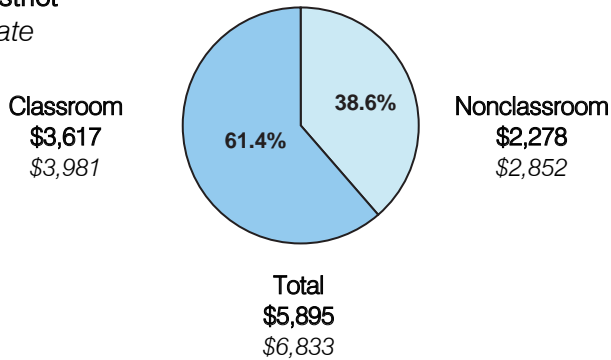
District size: Large
 Students attending: 7,365
 Number of schools: 4
 Number of certified teachers: 349

Classroom Dollars

Fiscal year 2006 averages per pupil

District

State

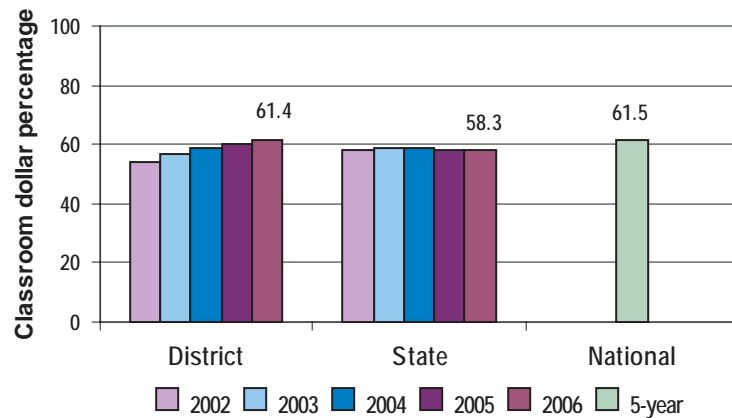


Comparative Information

	District			State
	2004	2005	2006	2006
Student/teacher ratio	20.3	21.7	21.1	17.7
Average teacher salary	\$42,500	\$46,000	\$48,500	\$42,967
Average years' experience	7.8	7.4	6.8	8.3

Classroom dollar ranking: 25 of 229 districts.

5-year comparison



Expenditures by function

	District					State	National
	2002	2003	2004	2005	2006	2006	5-year
Classroom dollars	53.9	57.0	59.0	59.9	61.4	58.3	61.5
Nonclassroom dollars:							
Administration	8.8	8.4	7.8	6.5	6.5	9.4	11.0
Plant operations	14.2	15.0	13.7	14.4	12.5	11.2	9.6
Food service	4.3	4.0	3.9	4.4	4.4	4.7	3.9
Transportation	4.1	4.3	4.6	3.6	4.2	4.2	4.0
Student support	10.1	8.9	8.8	9.1	8.7	7.2	5.1
Instruction support	4.3	2.1	1.9	1.7	2.0	4.8	4.7
Other	0.3	0.3	0.3	0.4	0.3	0.2	0.2

Proposition 301

District-reported 2006 results

Teacher pay

- On average, each teacher earned an additional \$4,959 in salary, which does not include performance pay subsequently distributed in fiscal year 2007.

Performance

- The District accomplished most of its goals, which were similar to the prior fiscal year's goals and were based on school performance.
- All schools were labeled "performing" or better by ADE for AZ LEARNS, and all but 1 school demonstrated Adequate Yearly Progress.
- The student attendance rate was at least 95 percent, the dropout rate was 6 percent or less, and the graduation rate was at least 90 percent.
- Other goals were related to parent-student satisfaction survey results and the number of student suspensions.

Menu

- Teachers continued to receive additional compensation for preparing site action plans to help increase student achievement.