

# Toltec Elementary School District

Pinal County

Efficiency peer groups 9 and T-6, Achievement peer group 17

Legislative district(s): 11

District size, location:

Medium, Rural

Students attending:

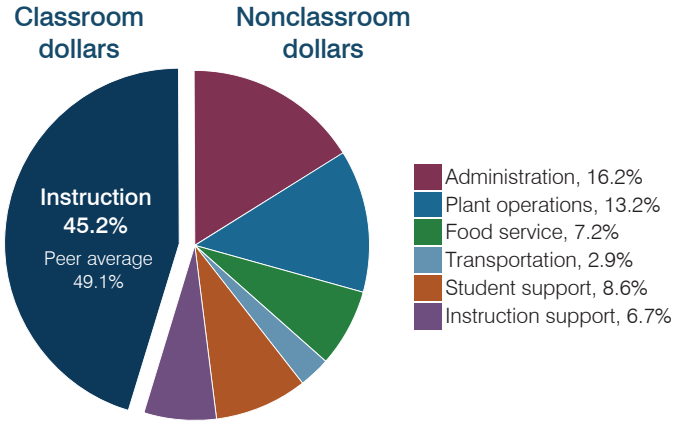
1,026

Number of schools:

2

## OPERATIONAL EFFICIENCY

### Spending by operational area



### Efficiency measures relative to peer averages

Operational area	Measure	District	Peer average	State average
Administration	Cost per pupil	\$1,196	\$1,108	\$806
	Students per administrative position	64	59	67
Plant operations	Cost per square foot	\$5.88	\$7.02	\$6.10
	Square footage per student	166	149	154
Food service	Cost per meal	\$2.80	\$2.88	\$2.81
Transportation	Cost per mile	\$3.24	\$3.68	\$3.72
	Cost per rider	\$290	\$543	\$1,092

Very low   Low   Comparable   High   Very high

### Per pupil spending

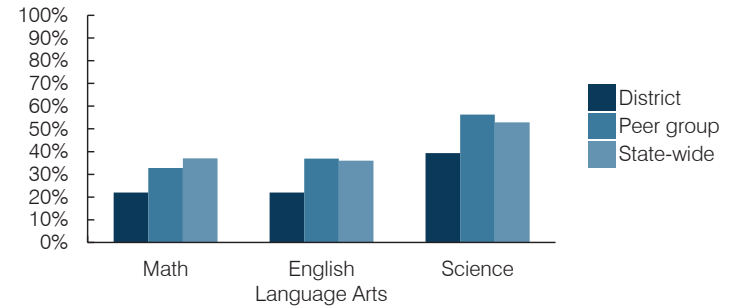
Spending by area	District		Peer average 2016	State average 2016
	2015	2016		
Instruction	\$ 4,180	\$ 3,351	\$ 3,970	\$ 4,145
Administration	831	1,196	1,108	806
Plant operations	891	977	1,027	939
Food service	577	530	573	415
Transportation	333	218	437	364
Student support	521	640	512	633
Instruction support	476	498	473	444
<b>Total operational</b>	<b>\$ 7,809</b>	<b>\$ 7,410</b>	<b>\$ 8,100</b>	<b>\$ 7,746</b>
Land and buildings	\$ 1,185	\$ 447	\$ 302	\$ 621
Equipment	204	218	308	400
Interest	326	96	81	216
Other	141	0	115	153
<b>Total nonoperational</b>	<b>\$ 1,856</b>	<b>\$ 761</b>	<b>\$ 806</b>	<b>\$ 1,390</b>
<b>Total per pupil spending</b>	<b>\$ 9,665</b>	<b>\$ 8,171</b>	<b>\$ 8,906</b>	<b>\$ 9,136</b>

## STUDENT AND TEACHER MEASURES, FINANCIAL ASSESSMENT, AND REVENUES

### Student and teacher measures

Measure	District	Peer average	State average
Attendance rate (2015)	93%	95%	94%
Graduation rate (2015)	N/A	N/A	N/A
Poverty rate (2015)	16%	19%	23%
Students per teacher	16.3	14.2	18.6
Average teacher salary	\$33,394	\$44,172	\$46,384
Amount from Proposition 301	\$1,410	\$4,469	\$5,315
Average years of teacher experience	11.4	12.6	11.0
Percentage of teachers in first 3 years	15%	14%	20%

### Students who passed state assessments



### Financial stress assessment

Overall financial stress level: **High**

Measure: 2014 through 2016	Assessment
Change in number of district students	Moderate decrease
Spending exceeded operating/capital budgets	Capital only
Spending increase election results	No election held
Operating reserve percentage, Trend	3.6%, Increasing
Years of capital reserve held	Less than 1 year
Current financial and internal control status	Noncompliant

Low   Moderate   High

### Per pupil revenues

Revenues by source	District		Peer average 2016	State average 2016
	2015	2016		
Federal	\$ 1,965	\$ 2,007	\$ 1,836	\$ 1,301
State	4,884	4,499	4,877	3,780
Local	2,438	2,704	2,734	4,268
<b>Total revenues per pupil</b>	<b>\$ 9,287</b>	<b>\$ 9,210</b>	<b>\$ 9,447</b>	<b>\$ 9,349</b>

### Select revenues from common sources

Source	District 2015	District 2016	Peer average 2016	State average 2016
Equalization formula funding	\$ 5,974	\$ 5,547	\$ 5,688	\$ 5,471
Grants	1,967	2,045	1,981	1,182
Donations and tax credits	8	5	72	86

### Select revenues from less common sources

Source	District 2015	District 2016	Number of peers receiving
Desegregation	\$ 0	\$ 0	0 of 10
Small school adjustment	0	0	0 of 10
Federal impact aid	0	0	3 of 10
Voter-approved levy increases	398	442	7 of 10

# Toltec ESD—page 2

## Classroom dollar percentage

Year:	2001	2002	2003	2004	2005	2006	2007	2008	2009	2010	2011	2012	2013	2014	2015	2016
Percentage:	61.0	60.0	58.1	57.5	62.3	64.6	59.0	58.0	59.0	53.9	49.9	44.9	45.4	49.2	53.5	45.2

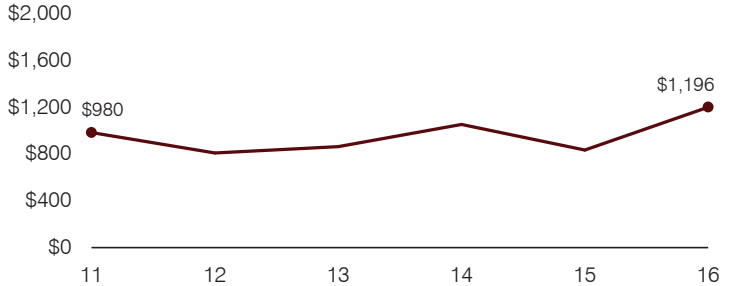
## OPERATIONAL TRENDS

Fiscal years as indicated

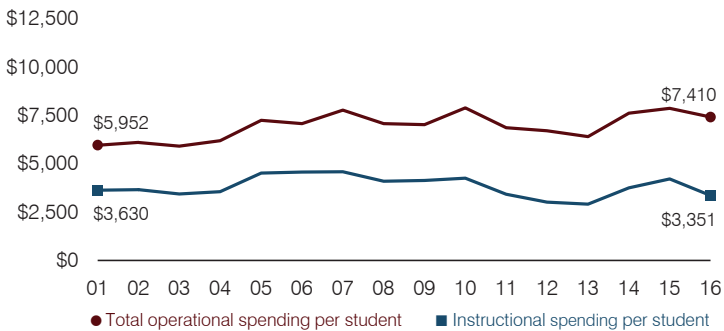
### 5-year spending trend (2011 through 2016)

Total operational spending per pupil, adjusted for inflation, increased by 8 percent. The percentage of dollars spent in the classroom varied year to year, decreasing overall from 49.9 to 45.2 percent. Overall, as a percentage of total operational spending, student support and instruction support increased substantially, food service increased, and administration increased slightly, while transportation decreased substantially.

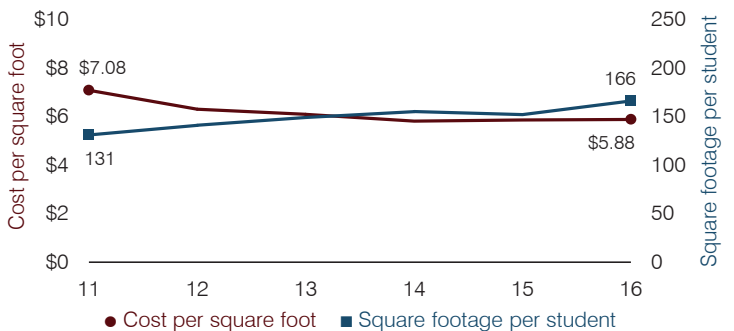
### Administrative cost per pupil



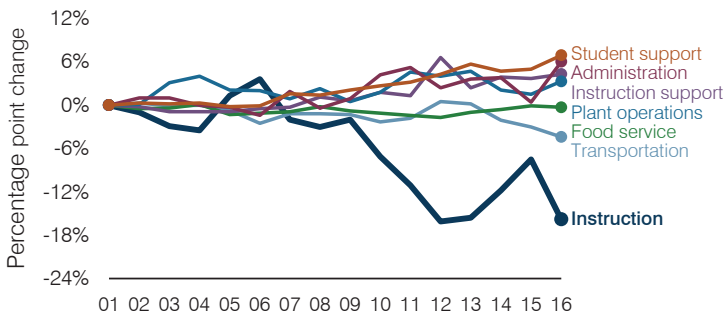
### Total operational and instructional spending per pupil (inflation adjusted to 2016 dollars)



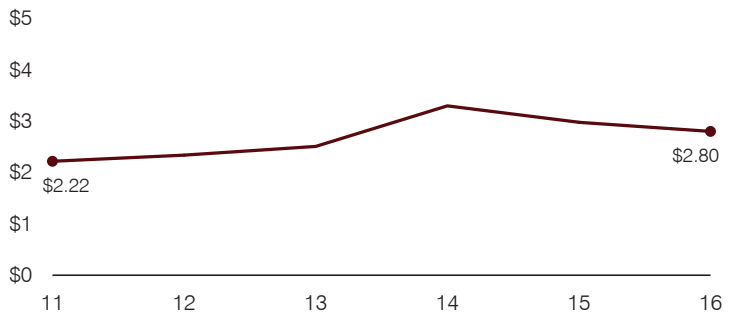
### Plant cost per square foot and square footage per student



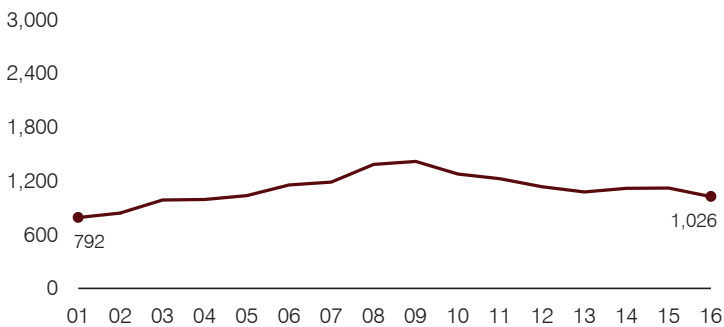
### Changes in operational spending percentages



### Food service cost per meal



### Students attending



### Transportation costs per mile and per rider

