

# Toltec Elementary School District

Pinal County  
Operational peer group: J  
Legislative districts: 23

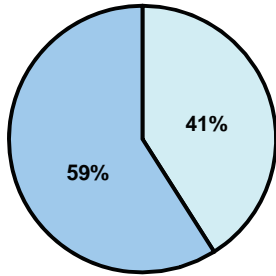
District size: Medium  
Students attending: 1,419  
Number of schools: 2

## OPERATIONAL EFFICIENCY

### Average per-pupil spending

District  
State

Classroom  
\$3,725  
\$4,497



Nonclassroom  
\$2,593  
\$3,411

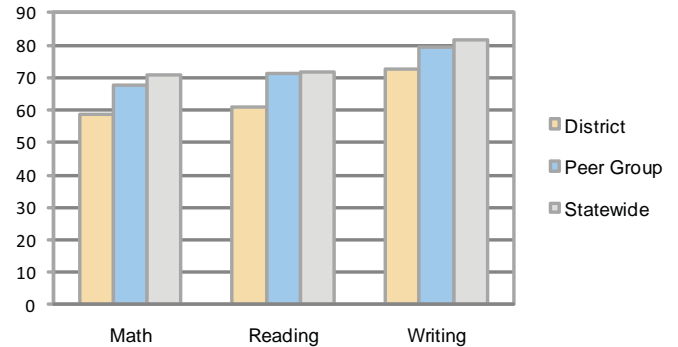
Total  
\$6,318  
\$7,908

### 5-year trend

Total spending per pupil increased by 31 percent. Spending in the classroom was very inconsistent year to year and increased overall from 57.5 to 59 percent. Spending on plant operations and transportation decreased significantly, while spending in other nonclassroom areas varied year to year.

## STUDENT ACHIEVEMENT AND TEACHER INFORMATION

### Percentage of students meeting state standards (AIMS)



### Adequate Yearly Progress (AYP) toward federal goals

2 schools met all applicable AYP objectives for NCLB. 2 did not because some students failed to demonstrate sufficient academic progress.

### District's cost measures relative to peer group

Operational Area	Measure	District	Peer Average	State Average
Administration	Cost per pupil	\$704	\$921	\$729
	Students per administrator	89	64	66
Plant Operations	Cost per square foot	\$5.80	\$6.71	\$6.40
	Square footage per student	113	125	144
Food Service	Cost per meal equivalent	\$2.40	\$2.56	\$2.53
Transportation	Cost per mile	\$3.65	\$3.04	\$3.36
	Miles per rider	95	145	271

Very Low    Low    Comparable    High    Very High

### Student and teacher information

Measure	District	Peer average	State average
Attendance rate	96%	95%	95%
Graduation rate (2008)	N/A	70%	75%
Poverty rate	12%	15%	19%
Student/teacher ratio	18.4	16.8	17.1
Average teacher salary	\$38,203	\$42,842	\$45,209
Average years' experience	6.9	10.1	8.3
Percent of teachers in first 3 years	31%	24%	16%

### Proposition 301

#### Teacher pay

On average, each teacher earned \$4,197 in additional salary, and each librarian, speech pathologist, counselor, and reading interventionist earned \$4,165.

#### Performance pay plan goals and results

Type of goal	Goal met?
Student achievement	▲
Dropout/ graduation rates	
Student attendance	
Parent/student satisfaction	
Teacher attendance	
Teacher professional development	
Teacher evaluations	
Tutoring	
Other	

■ = yes, □ = no, and ▲ = partially

### Per-pupil spending by function

	District		Peer	State	National
	2008	2009	2009	2009	2007
<b>Total</b>	<b>\$6,277</b>	<b>\$6,318</b>	<b>\$7,752</b>	<b>\$7,908</b>	<b>\$9,683</b>
<b>Classroom dollars</b>	<b>\$3,600</b>	<b>\$3,725</b>	<b>\$4,151</b>	<b>\$4,497</b>	<b>\$5,903</b>
<b>Nonclassroom dollars:</b>	<b>\$2,677</b>	<b>\$2,593</b>	<b>\$3,601</b>	<b>\$3,411</b>	<b>\$3,780</b>
Administration	656	704	921	729	1,050
Plant Operations	765	656	879	920	951
Food Service	458	423	524	382	369
Transportation	383	378	410	343	406
Student Support	194	241	483	594	512
Instruction Support	221	191	384	431	470
Other	0	0	0	12	22