

Classroom Dollars and Proposition 301 Results

Toltec Elementary School District

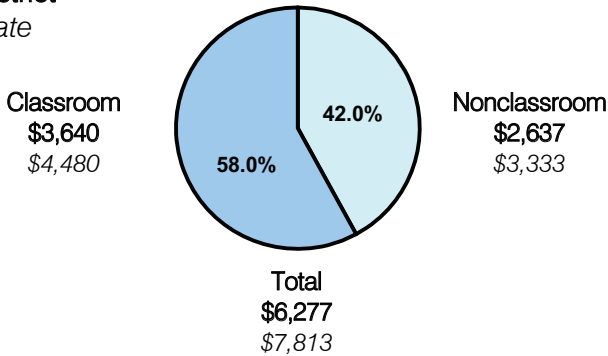
Pinal County

District size: Medium
 Students attending: 1,385
 Number of schools: 2
 Number of certified teachers: 72

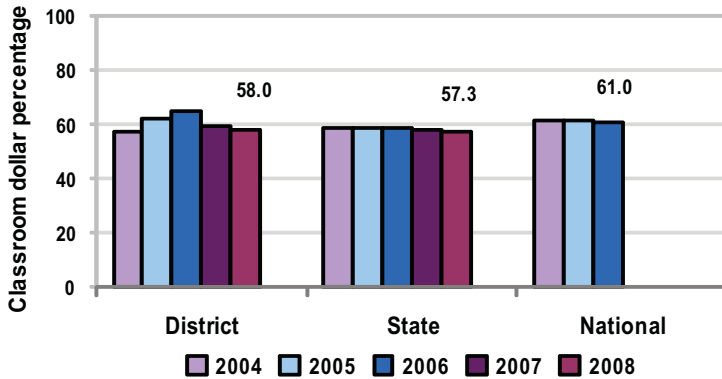
Classroom Dollars

Fiscal year 2008 averages per pupil

District
 State



5-year comparison



Expenditures by function

	District					State 2008	National 2006
	2004	2005	2006	2007	2008		
Classroom dollars	57.5	62.3	64.6	56.9	58.0	57.3	61.0
Nonclassroom dollars:							
Administration	10.2	9.9	8.8	14.1	9.8	9.2	10.8
Plant operations	13.9	12.0	11.9	10.6	12.2	11.3	9.9
Food service	7.6	6.2	6.4	6.6	7.3	4.8	3.8
Transportation	7.3	6.6	4.8	5.7	6.1	4.4	4.2
Student support	2.0	1.5	1.6	3.8	3.1	7.4	5.2
Instruction support	1.5	1.4	1.9	2.3	3.5	5.4	4.9
Other		0.1				0.2	0.2

Comparative Information

	District			State 2008
	2006	2007	2008	
Student/teacher ratio	19.4	18.0	19.2	17.3
Average teacher salary	\$35,008	\$35,657	\$38,866	\$44,967
Average years' experience	5.5	5.5	5.5	8.1

Classroom dollar ranking: 62 of 230 districts.

Proposition 301

District-reported 2008 results

Teacher pay

- On average, each teacher earned an additional \$6,597 in salary, and each instructional aide, librarian, and speech pathologist earned between \$1,408 and \$6,666 in additional salary.

Performance

- The District accomplished its goals, which were the same as the prior fiscal year's goals and were based on district performance.
- The student achievement goal was based on standardized test scores.
- Teachers received acceptable performance evaluations.

Menu

- Monies were primarily used to increase teacher compensation.
- The District continued to pay 24 instructional aides to help reduce class sizes.