

Classroom Dollars and Proposition 301 Results

Toltec Elementary School District

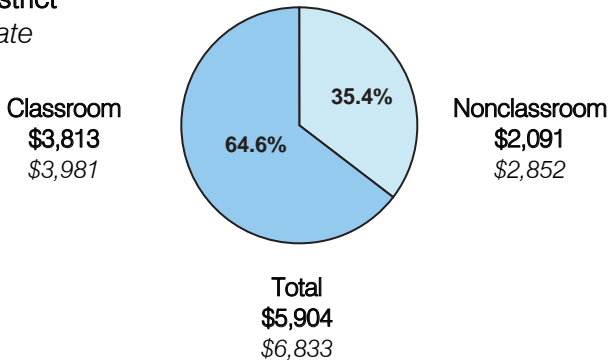
Pinal County

District size: Medium
 Students attending: 1,156
 Number of schools: 2
 Number of certified teachers: 60

Classroom Dollars

Fiscal year 2006 averages per pupil

District
 State

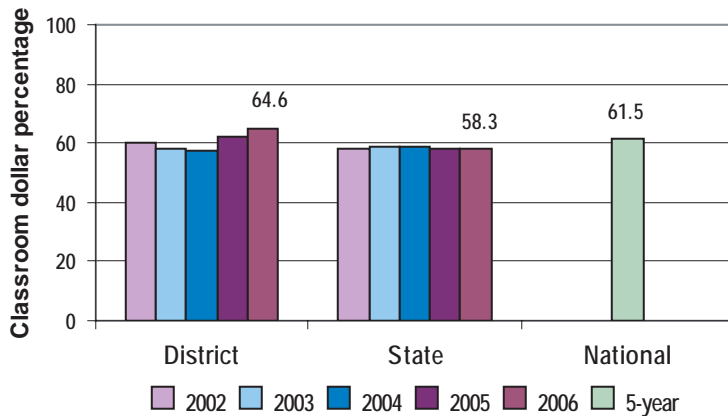


Comparative Information

	District			State
	2004	2005	2006	2006
Student/teacher ratio	18.7	17.3	19.4	17.7
Average teacher salary	\$32,367	\$34,994	\$35,008	\$42,967
Average years' experience	5.9	5.4	5.5	8.3

Classroom dollar ranking: 5 of 229 districts.

5-year comparison



Expenditures by function

	Percentage					State 2006	National 5-year
	2002	2003	2004	2005	2006		
Classroom dollars	60.0	58.1	57.5	62.3	64.6	58.3	61.5
Nonclassroom dollars:							
Administration	11.2	11.2	10.2	9.9	8.8	9.4	11.0
Plant operations	10.0	13.0	13.9	12.0	11.9	11.2	9.6
Food service	7.0	7.1	7.6	6.2	6.4	4.7	3.9
Transportation	7.6	7.2	7.3	6.6	4.8	4.2	4.0
Student support	2.0	1.9	2.0	1.5	1.6	7.2	5.1
Instruction support	2.2	1.5	1.5	1.4	1.9	4.8	4.7
Other				0.1		0.2	0.2

Proposition 301

District-reported 2006 results

Teacher pay

- On average, each teacher earned an additional \$4,720 in salary, and each instructional aide earned an additional \$705.

Performance

- The District accomplished its goals, which were based on district performance.
- The student achievement goal was based on AIMS test scores.
- Teachers received acceptable performance evaluations.

Menu

- Monies were primarily used to increase teacher compensation.
- 14 instructional aides were paid to help reduce class sizes.