

# Classroom Dollars and Proposition 301 Results

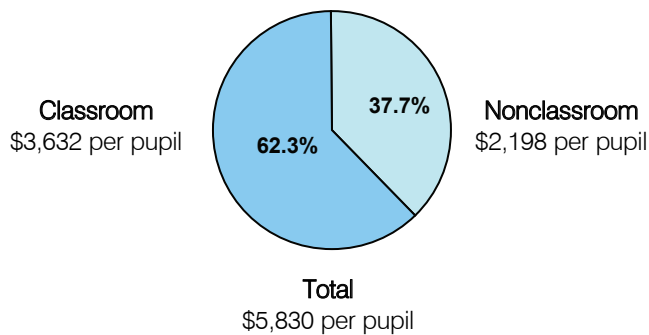
## Toltec Elementary School District

Pinal County

District size: Medium  
 Students attending: 1,038  
 Number of schools: 2  
 Number of certified teachers: 60

### Classroom Dollars

Fiscal year 2005

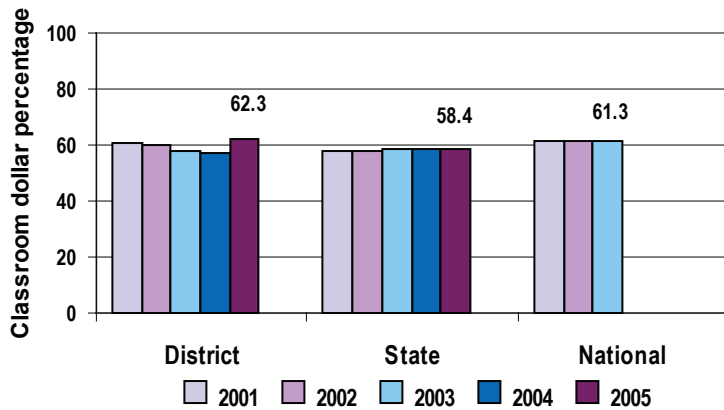


### Comparative Information

	District			State
	2003	2004	2005	2005
Student/teacher ratio	20.2	18.7	17.3	18.3
Average teacher salary	\$33,637	\$32,367	\$34,994	\$39,095
Average years' experience	6.5	5.9	5.4	8.5

Classroom dollar ranking: 24 of 228 districts.

### 5-year comparison



### Expenditures by function

	Percentage						
	2001	2002	District			State	National
	2001	2002	2003	2004	2005	2005	2002
Classroom dollars	61.0	60.0	58.1	57.5	62.3	58.4	61.5
Nonclassroom dollars:							
Administration	10.2	11.2	11.2	10.2	9.9	9.5	11.1
Plant operations	9.9	10.0	13.0	13.9	12.0	11.4	9.5
Food service	7.5	7.0	7.1	7.6	6.2	4.8	4.0
Transportation	7.3	7.6	7.2	7.3	6.6	4.1	4.0
Student support	1.7	2.0	1.9	2.0	1.5	7.0	5.0
Instruction support	2.4	2.2	1.5	1.5	1.4	4.6	4.7
Other					0.1	0.2	0.2

### Proposition 301

#### District-reported 2005 results

##### Teacher pay

- On average, each teacher earned an additional \$5,094 in additional salary.

##### Performance

- The District accomplished its goals, which were similar to the prior fiscal year's goals and were based on district performance.
- Students in grades 3 through 8 demonstrated 1 year's academic progress.
- Teachers received acceptable performance evaluations.

##### Menu

- Monies were used solely to increase teacher compensation.