

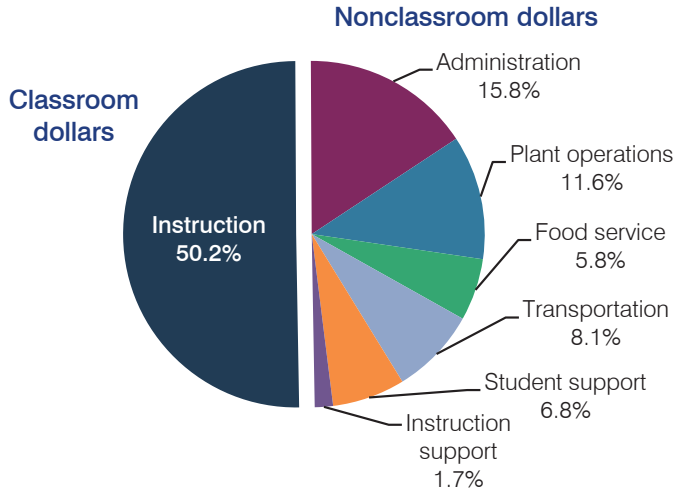
Tombstone Unified School District

Cochise County
 Efficiency peer groups 5 and T-9, Achievement peer group 5
 Legislative district(s): 14

District size, location: Medium, Town
 Students attending: 904
 Number of schools: 3

OPERATIONAL EFFICIENCY

Spending by operational area



5-year spending trend

Total spending per pupil decreased by 6 percent. Spending in the classroom was very inconsistent year to year, increasing overall from 47.2 to 50.2 percent. Overall, spending on plant operations and student support decreased substantially, while spending on transportation increased. Spending on other nonclassroom areas varied year to year.

Cost measures relative to peer averages

Operational area	Measure	District	Peer average	State average
Administration	Cost per pupil	\$1,389	\$1,077	\$746
	Students per administrator	40	56	67
Plant operations	Cost per square foot	\$3.97	\$4.83	\$6.03
	Square footage per student	256	260	153
Food service	Cost per meal equivalent	\$3.31	\$3.14	\$2.58
Transportation	Cost per mile	\$2.13	\$2.42	\$3.55
	Cost per rider	\$870	\$1,013	\$1,015

Very low Low Comparable High Very high

Per pupil spending by operational area

	District		Peer average	State average	National average
	2012	2013	2013	2013	2011
Total	\$8,065	\$8,759	\$8,465	\$7,496	\$10,658
Classroom dollars	3,812	4,397	4,259	4,031	6,520
Nonclassroom dollars:	4,253	4,362	4,206	3,465	4,138
Administration	1,302	1,389	1,077	746	1,138
Plant operations	1,049	1,016	1,237	924	1,015
Food service	440	508	419	396	412
Transportation	636	707	535	369	452
Student support	610	597	630	582	593
Instruction support	216	145	308	448	528

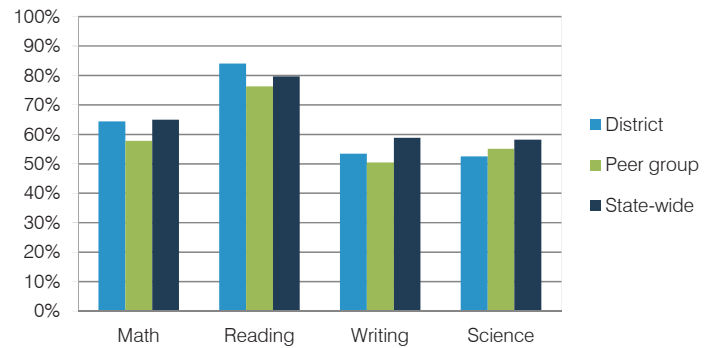
STUDENT ACHIEVEMENT, TEACHER MEASURES, AND FINANCIAL ASSESSMENT

ADE-reported district and school letter grades

District grade: **B**

Grade	Number of schools	Percentage of schools
A	0	0%
B	3	100%
C	0	0%
D	0	0%
F	0	0%
Not rated	0	0%

Students who met state standards (AIMS)



Student and teacher measures

Measure	District	Peer average	State average
Attendance rate	94%	94%	94%
Graduation rate (2012)	92%	83%	77%
Poverty rate (2012)	21%	24%	25%
Students per teacher	16.3	16.6	18.3
Average teacher salary	\$41,684	\$41,866	\$45,264
Amount from Proposition 301	\$3,110	\$4,192	\$3,784
Average years of teacher experience	10.6	11.7	10.9
Percentage of teachers in first 3 years	12%	16%	19%

Financial stress assessment

Overall financial stress level: **Moderate**

Measure: 2011 through 2013

Measure	Assessment
Number of students attending district	Increase
Spending exceeded operating/capital budgets	Capital only
Spending increase election results	No election held
Operating reserve percentage (max. 4%), trend	Impact Aid Fund reserve
Years of capital reserve held	1 to 3 years
Current financial and internal control status	Compliant

Stress level

