

# Tombstone Unified School District

Cochise County

Efficiency peer groups 5 and T-9, Achievement peer group 4

Legislative district(s): 14

District size, location:

Medium, Rural

Students attending:

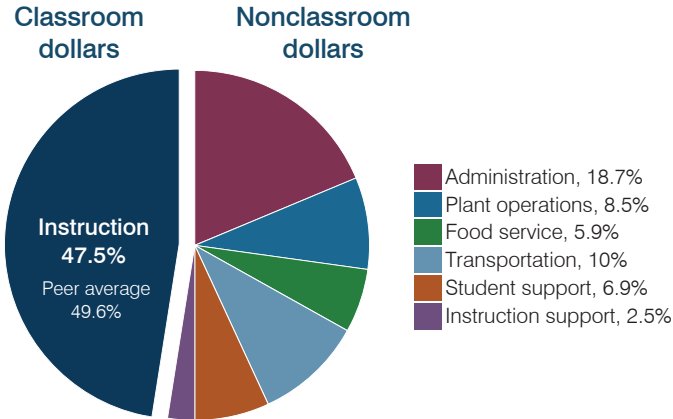
800

Number of schools:

3

## OPERATIONAL EFFICIENCY

### Spending by operational area



### Efficiency measures relative to peer averages

Operational area	Measure	District	Peer average	State average
Administration	Cost per pupil	\$1,686	\$1,145	\$806
	Students per administrative position	43	56	67
Plant operations	Cost per square foot	\$2.66	\$5.22	\$6.10
	Square footage per student	289	270	154
Food service	Cost per meal	\$3.52	\$3.40	\$2.81
Transportation	Cost per mile	\$2.33	\$2.49	\$3.72
	Cost per rider	\$1,152	\$1,031	\$1,092

### Per pupil spending

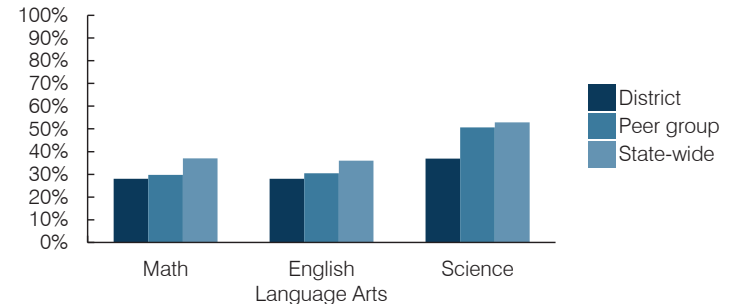
Spending by area	District		Peer average 2016	State average 2016
	2015	2016		
Instruction	\$ 4,215	\$ 4,284	\$ 4,576	\$ 4,145
Administration	1,550	1,686	1,145	806
Plant operations	833	770	1,342	939
Food service	541	529	450	415
Transportation	896	901	522	364
Student support	604	618	695	633
Instruction support	202	225	396	444
<b>Total operational</b>	<b>\$ 8,841</b>	<b>\$ 9,013</b>	<b>\$ 9,126</b>	<b>\$ 7,746</b>
Land and buildings	\$ 188	\$ 90	\$ 452	\$ 621
Equipment	322	160	498	400
Interest	157	70	243	216
Other	12	8	65	153
<b>Total nonoperational</b>	<b>\$ 679</b>	<b>\$ 328</b>	<b>\$ 1,258</b>	<b>\$ 1,390</b>
<b>Total per pupil spending</b>	<b>\$ 9,520</b>	<b>\$ 9,341</b>	<b>\$ 10,384</b>	<b>\$ 9,136</b>

## STUDENT AND TEACHER MEASURES, FINANCIAL ASSESSMENT, AND REVENUES

### Student and teacher measures

Measure	District	Peer average	State average
Attendance rate (2015)	93%	95%	94%
Graduation rate (2015)	92%	87%	78%
Poverty rate (2015)	19%	16%	23%
Students per teacher	15.4	15.3	18.6
Average teacher salary	\$37,430	\$43,729	\$46,384
Amount from Proposition 301	\$4,282	\$4,733	\$5,315
Average years of teacher experience	8.9	10.4	11.0
Percentage of teachers in first 3 years	26%	19%	20%

### Students who passed state assessments



### Financial stress assessment

Overall financial stress level: **High**

Measure: 2014 through 2016

Assessment

Change in number of district students	Large decrease
Spending exceeded operating/capital budgets	Capital only
Spending increase election results	No election held
Operating reserve percentage, Trend	3.8%, Increasing
Years of capital reserve held	Less than 1 year
Current financial and internal control status	Marginally compliant

Low	Moderate	High
-----	----------	------

### Per pupil revenues

Revenues by source	District		Peer average 2016	State average 2016
	2015	2016		
Federal	\$ 1,385	\$ 1,248	\$ 4,015	\$ 1,301
State	4,176	5,814	4,190	3,780
Local	4,563	5,130	4,081	4,268
<b>Total revenues per pupil</b>	<b>\$ 10,124</b>	<b>\$ 12,192</b>	<b>\$ 12,286</b>	<b>\$ 9,349</b>

### Select revenues from common sources

Equalization formula funding	\$ 6,292	\$ 7,158	\$ 5,922	\$ 5,471
Grants	1,471	1,361	1,805	1,182
Donations and tax credits	52	76	139	86

### Select revenues from less common sources

		Number of peers receiving
Desegregation	\$ 0	1 of 29
Small school adjustment	0	0 of 29
Federal impact aid	49	14 of 29
Voter-approved levy increases	0	19 of 29

# Tombstone USD—page 2

## Classroom dollar percentage

Year:	2001	2002	2003	2004	2005	2006	2007	2008	2009	2010	2011	2012	2013	2014	2015	2016
Percentage:	57.6	55.0	55.5	56.4	56.2	50.9	47.7	47.2	52.2	47.5	46.5	47.3	50.2	47.7	47.7	47.5

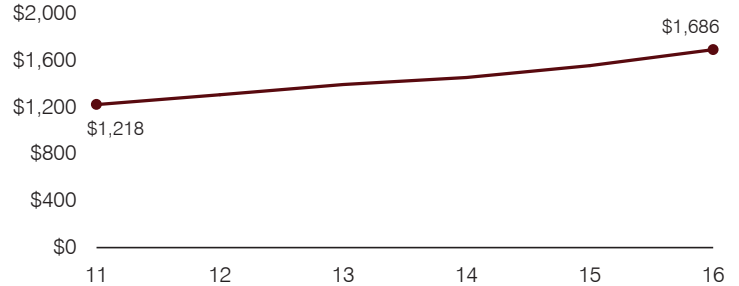
## OPERATIONAL TRENDS

Fiscal years as indicated

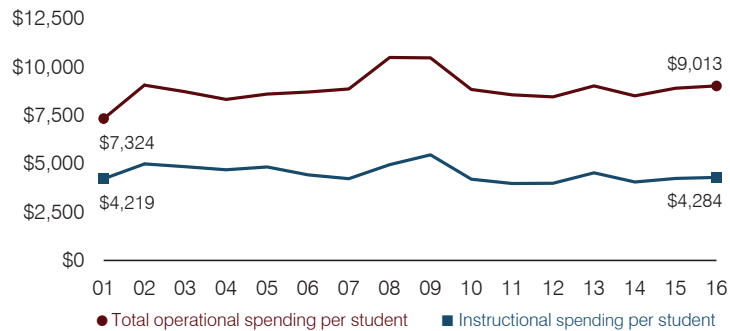
### 5-year spending trend (2011 through 2016)

Total operational spending per pupil, adjusted for inflation, increased by 5 percent. The percentage of dollars spent in the classroom varied year to year, increasing overall from 46.5 to 47.5 percent. As a percentage of total spending, plant operations decreased substantially and student support decreased slightly. Administration increased substantially and transportation increased slightly overall.

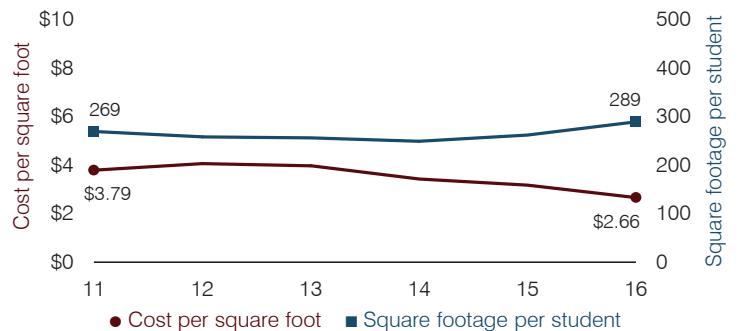
### Administrative cost per pupil



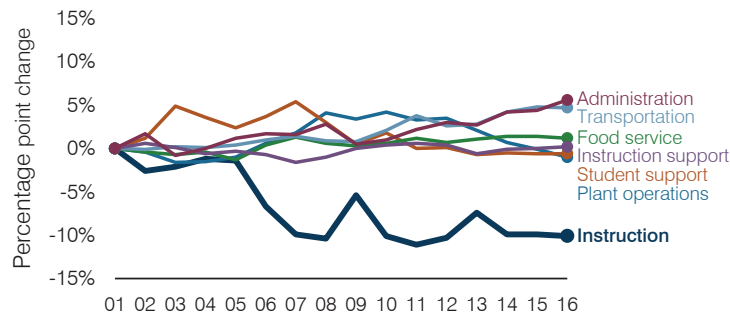
### Total operational and instructional spending per pupil (inflation adjusted to 2016 dollars)



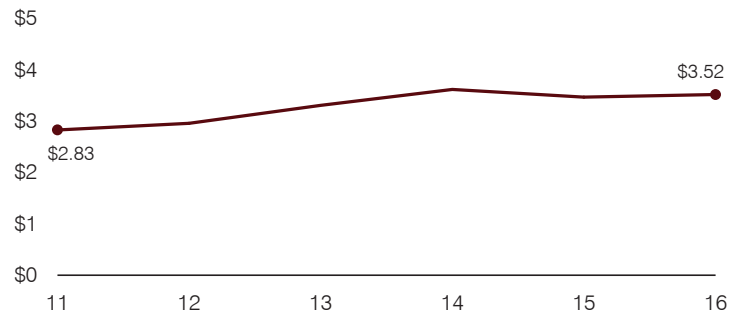
### Plant cost per square foot and square footage per student



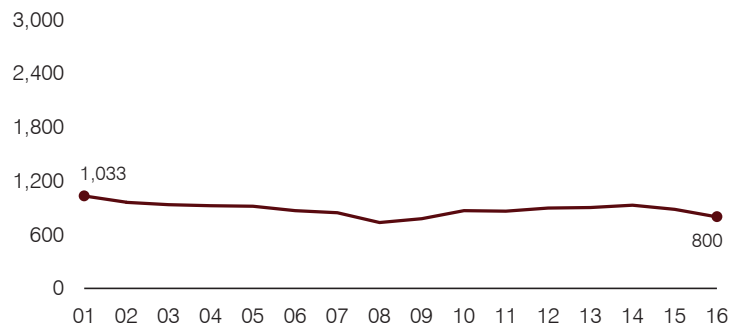
### Changes in operational spending percentages



### Food service cost per meal



### Students attending



### Transportation costs per mile and per rider

