

# Classroom Dollars and Proposition 301 Results

## Tonto Basin Elementary School District

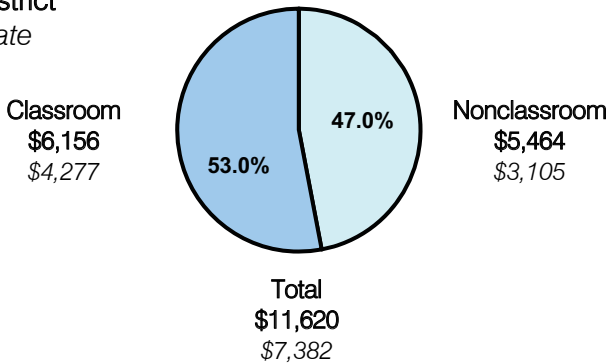
Gila County

District size: Very Small  
 Students attending: 72  
 Number of schools: 1  
 Number of certified teachers: 6

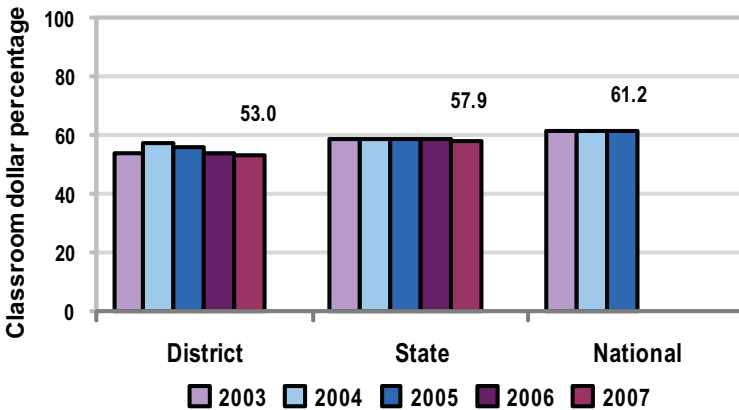
### Classroom Dollars

Fiscal year 2007 averages per pupil

District  
 State



5-year comparison



Expenditures by function

	District					State 2007	National 2005
	2003	2004	2005	2006	2007		
Classroom dollars	53.8	57.3	56.2	54.0	53.0	57.9	61.2
Nonclassroom dollars:							
Administration	17.6	13.9	14.5	14.9	16.4	9.5	11.0
Plant operations	6.4	8.8	9.1	7.8	10.2	11.3	9.6
Food service	11.4	11.4	11.4	11.2	10.1	4.7	3.9
Transportation	5.9	5.3	7.3	9.6	7.9	4.3	4.1
Student support	0.8	1.3		1.5	1.3	7.3	5.2
Instruction support	4.1	2.0	1.5	1.0	1.1	4.8	4.8
Other						0.2	0.2

### Comparative Information

	District			State 2007
	2005	2006	2007	
Student/teacher ratio	10.7	11.4	11.7	17.4
Average teacher salary	\$39,212	\$40,276	\$38,959	\$43,833
Average years' experience	8.2	9.0	9.8	8.1

Classroom dollar ranking: 153 of 229 districts.

### Proposition 301

#### District-reported 2007 results

##### Teacher Pay

- On average, each teacher earned an additional \$2,941 in salary.

##### Performance

- The District accomplished its goals, which were the same as the prior fiscal year's goals and were based on district and individual performance.
- 80 percent of students demonstrated at least 9 months' progress in reading and math based on pre- and post-test scores.
- Teachers received satisfactory performance evaluations and at least a "B" average on parent and student satisfaction questionnaires.

##### Menu

- Monies continue to be used to pay an instructional aide to work with underperforming students.