

Topock Elementary School District

Mohave County

Efficiency peer groups 11 and T-11, Achievement peer group 19

Legislative district(s): 5

District size, location:

Very small, Rural

Students attending:

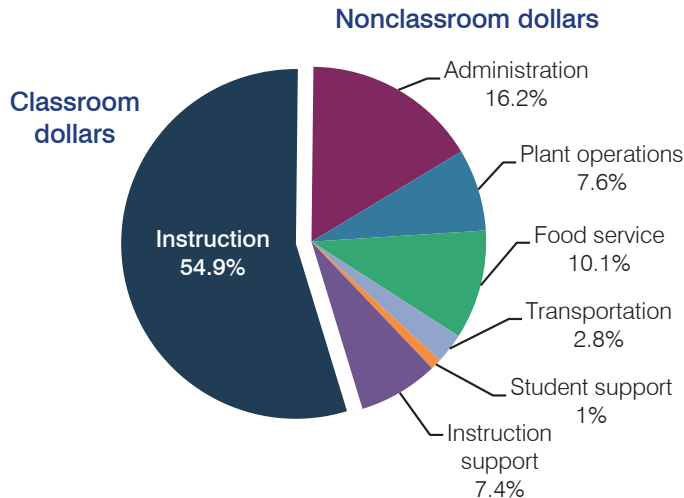
132

Number of schools:

1

OPERATIONAL EFFICIENCY

Spending by operational area



5-year spending trend

Total spending per pupil increased by 10 percent. Spending in the classroom varied year to year, increasing overall from 52.4 to 54.9 percent. Spending on most nonclassroom areas also varied year to year, as is common for very small districts. Overall, spending on administration decreased substantially and spending on food service increased substantially.

Cost measures relative to peer averages

Operational area	Measure	District	Peer average	State average
Administration	Cost per pupil	\$1,686	\$2,572	\$746
	Students per administrator	44	30	67
Plant operations	Cost per square foot	\$3.97	\$6.59	\$6.03
	Square footage per student	199	343	153
Food service	Cost per meal equivalent	\$1.92	\$4.93	\$2.58
Transportation	Cost per mile	\$1.53	\$1.64	\$3.55
	Cost per rider	\$287	\$1,184	\$1,015

Per pupil spending by operational area

	District		Peer average 2013	State average 2013	National average 2011
	2012	2013			
Total	\$8,940	\$10,402	\$15,203	\$7,496	\$10,658
Classroom dollars	5,245	5,709	7,647	4,031	6,520
Nonclassroom dollars:	3,695	4,693	7,556	3,465	4,138
Administration	1,801	1,686	2,572	746	1,138
Plant operations	1,316	790	2,148	924	1,015
Food service	117	1,046	851	396	412
Transportation	317	294	1,056	369	452
Student support	86	107	548	582	593
Instruction support	58	770	381	448	528

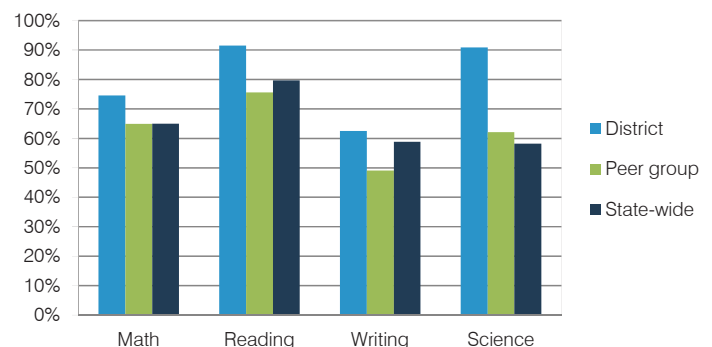
STUDENT ACHIEVEMENT, TEACHER MEASURES, AND FINANCIAL ASSESSMENT

ADE-reported district and school letter grades

District grade: **B**

Grade	Number of schools	Percentage of schools
A	0	0%
B	1	100%
C	0	0%
D	0	0%
F	0	0%
Not rated	0	0%

Students who met state standards (AIMS)



Student and teacher measures

Measure	District	Peer average	State average
Attendance rate	94%	95%	94%
Graduation rate (2012)	N/A	N/A	N/A
Poverty rate (2012)	33%	30%	25%
Students per teacher	14.6	13.9	18.3
Average teacher salary	\$36,239	\$41,809	\$45,264
Amount from Proposition 301	\$6,876	\$3,665	\$3,784
Average years of teacher experience	8.4	12.3	10.9
Percentage of teachers in first 3 years	29%	12%	19%

Financial stress assessment

Overall financial stress level: **High**

Measure: 2011 through 2013

Assessment

Number of students attending district	Steady
Spending exceeded operating/capital budgets	Operating and capital
Spending increase election results	No election held
Operating reserve percentage (max. 4%), trend	0.7%, Varying
Years of capital reserve held	1 to 3 years
Current financial and internal control status	Noncompliant

Stress level

