

Classroom Dollars and Proposition 301 Results

Topock Elementary School District

Mohave County

District size: Very Small
 Students attending: 140
 Number of schools: 1
 Number of certified teachers: 10

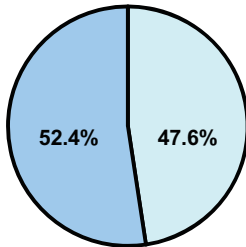
Classroom Dollars

Fiscal year 2008 averages per pupil

District

State

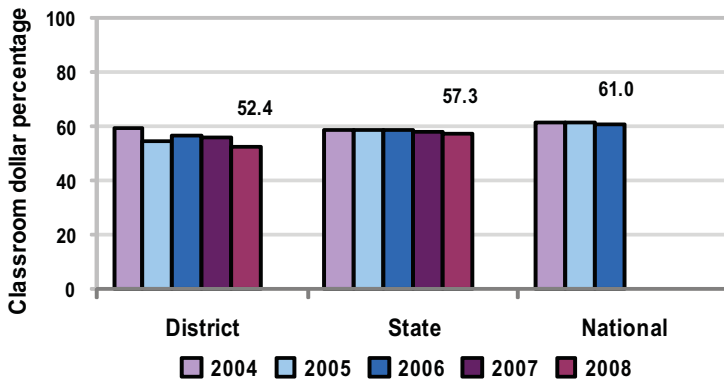
Classroom
 \$4,936
 \$4,480



Nonclassroom
 \$4,479
 \$3,333

Total
 \$9,415
 \$7,813

5-year comparison



Expenditures by function

	District					State 2008	National 2006
	2004	2005	2006	2007	2008		
Classroom dollars	59.1	54.5	56.4	56.2	52.4	57.3	61.0
Nonclassroom dollars:							
Administration	11.9	12.5	12.0	18.8	22.6	9.2	10.8
Plant operations	10.6	10.0	12.2	8.6	8.0	11.3	9.9
Food service	6.0	5.1	5.7	6.0	5.7	4.8	3.8
Transportation	3.7	4.4	3.5	3.2	3.6	4.4	4.2
Student support	3.7	7.3	5.5	1.9	2.2	7.4	5.2
Instruction support	5.0	6.2	4.7	5.3	5.5	5.4	4.9
Other						0.2	0.2

Comparative Information

	District			State 2008
	2006	2007	2008	
Student/teacher ratio	13.3	14.6	14.3	17.3
Average teacher salary	\$35,000	\$37,550	\$47,000	\$44,967
Average years' experience	10.1	9.2	7.0	8.1

Classroom dollar ranking: 154 of 230 districts.

Proposition 301

District-reported 2008 results

Teacher pay

- On average, each teacher earned an additional \$6,493 in salary.

Performance

- The District accomplished its goals, which were based on school and individual performance.
- Students' standardized test scores improved in math, reading, and writing over the prior year's scores.
- Student attendance improved over the prior year.
- At least 50 percent of parents responding to a survey reported satisfaction with the District.
- Teachers not on a performance improvement plan earned performance pay.
- Teachers could also earn performance pay for having 3 or fewer absences.

Menu

- Monies were used for professional development activities.