

Classroom Dollars and Proposition 301 Results

Topock Elementary School District

Mohave County

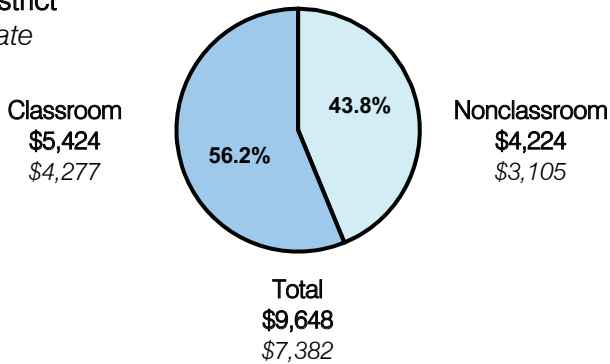
District size: Very Small
 Students attending: 127
 Number of schools: 1
 Number of certified teachers: 9

Classroom Dollars

Fiscal year 2007 averages per pupil

District

State

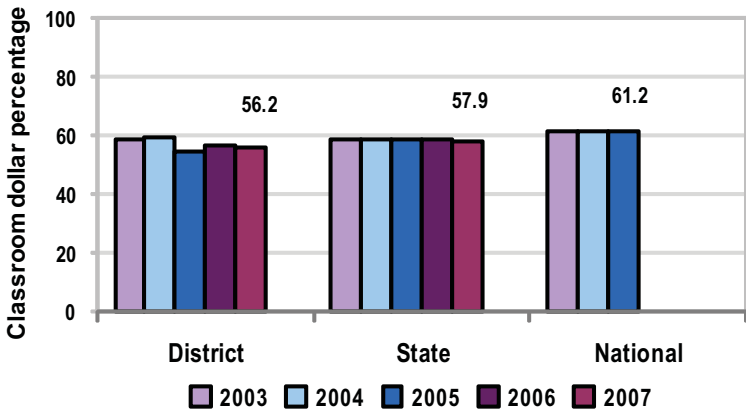


Comparative Information

	District			State
	2005	2006	2007	2007
Student/teacher ratio	13.4	13.3	14.6	17.4
Average teacher salary	\$34,859	\$35,000	\$37,550	\$43,833
Average years' experience	9.4	10.1	9.2	8.1

Classroom dollar ranking: 92 of 229 districts.

5-year comparison



Expenditures by function

	District					State	National
	2003	2004	2005	2006	2007	2007	2005
Classroom dollars	58.8	59.1	54.5	56.4	56.2	57.9	61.2
Nonclassroom dollars:							
Administration	13.2	11.9	12.5	12.0	18.8	9.5	11.0
Plant operations	11.0	10.6	10.0	12.2	8.6	11.3	9.6
Food service	5.6	6.0	5.1	5.7	6.0	4.7	3.9
Transportation	3.4	3.7	4.4	3.5	3.2	4.3	4.1
Student support	3.2	3.7	7.3	5.5	1.9	7.3	5.2
Instruction support	4.8	5.0	6.2	4.7	5.3	4.8	4.8
Other						0.2	0.2

Proposition 301

District-reported 2007 results

Teacher pay

- On average, each teacher earned an additional \$3,659 in salary.

Performance

- The District accomplished most of its goals, which were based on school performance.
- Students' standardized test scores improved in reading and writing over the prior year's scores.
- Student attendance improved over the prior year.
- Most teachers attended advanced classes and in-service trainings.
- Other goals were linked to teacher development and performance evaluations.

Menu

- Monies were used to increase teacher compensation.
- Monies were also used to compensate teachers for participating in professional development activities for reading, math, and other instructional activities.