

Tuba City Unified School District

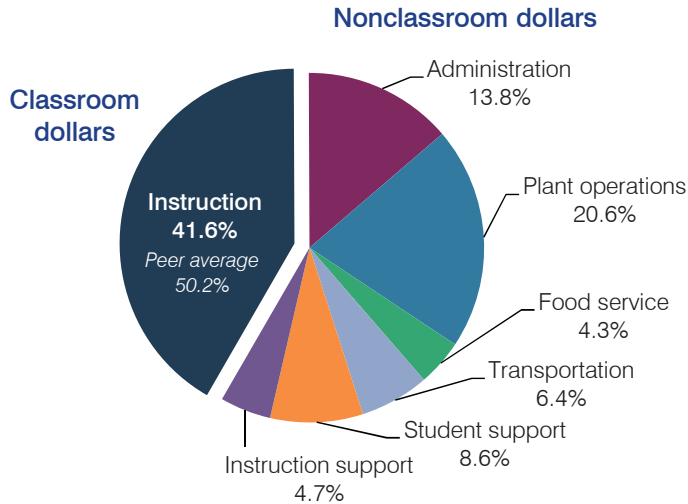
Coconino County
 Efficiency peer groups 5 and T-9, Achievement peer group 6
 Legislative district(s): 7

District size, location: Medium, Town
 Students attending: 1,579
 Number of schools: 7

OPERATIONAL EFFICIENCY

STUDENT AND TEACHER MEASURES, FINANCIAL ASSESSMENT, AND REVENUE

Spending by operational area



Efficiency measures relative to peer averages

Operational area	Measure	District	Peer average	State average
Administration	Cost per pupil	\$2,100	\$1,075	\$780
	Students per administrative position	35	58	67
Plant operations	Cost per square foot	\$7.75	\$4.90	\$6.09
	Square footage per student	405	258	153
Food service	Cost per meal equivalent	\$2.96	\$3.39	\$2.79
Transportation	Cost per mile	\$2.83	\$2.13	\$3.66
	Cost per rider	\$1,066	\$958	\$1,071

Very low Low Comparable High Very high

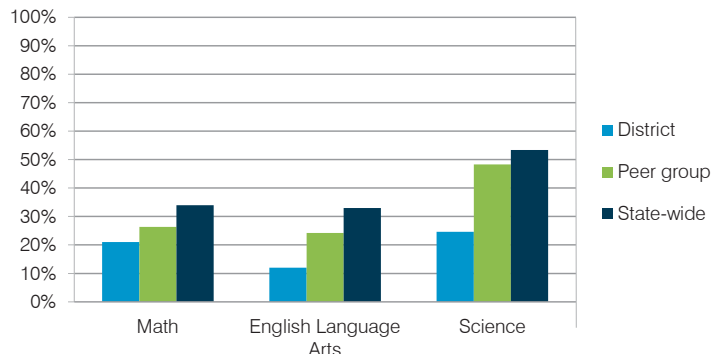
Per pupil spending

Spending by area	District		Peer average	State average
	2014	2015	2015	2015
Instruction	\$ 6,368	\$ 6,329	\$ 4,428	\$ 4,105
Administration	1,857	2,100	1,075	780
Plant operations	2,936	3,141	1,203	930
Food service	709	660	428	417
Transportation	965	967	498	371
Student support	1,347	1,302	623	613
Instruction support	841	711	353	442
Total operational	\$ 15,023	\$ 15,210	\$ 8,608	\$ 7,658
Land and buildings	\$ 650	\$ 332	\$ 504	\$ 641
Equipment	450	704	492	383
Interest	13	11	248	225
Other	52	17	57	150
Total nonoperational	\$ 1,165	\$ 1,064	\$ 1,301	\$ 1,399
Total per pupil spending	\$ 16,188	\$ 16,274	\$ 9,909	\$ 9,057

Student and teacher measures

Measure	District	Peer average	State average
Attendance rate	92%	93%	94%
Graduation rate (2014)	68%	80%	76%
Poverty rate (2014)	32%	31%	23%
Students per teacher	13.9	15.8	18.6
Average teacher salary	\$48,613	\$42,614	\$46,008
Average years of teacher experience	NR	12.4	11.0
Percentage of teachers in first 3 years	NR	20%	20%

Students who met state standards



Financial stress assessment

Overall financial stress level: **Low**

Measure: 2013 through 2015	Assessment
Change in number of district students	Moderate decrease
Spending exceeded operating/capital budgets	No overspending
Spending increase election results	Voter-approved
Operating reserve percentage (max. 4%), trend	Impact Aid Fund reserve
Years of capital reserve held	More than 3 years
Current financial and internal control status	Compliant

Low Moderate High

Per pupil revenues

Revenues by source	District		Peer average	State average
	2014	2015	2015	2015
Federal	\$ 8,766	\$ 9,397	\$ 3,790	\$ 1,299
State	4,831	4,515	3,700	3,517
Local	2,084	2,076	4,105	4,248
Total revenues per pupil	\$15,681	\$15,988	\$11,595	\$ 9,064
Select revenues from common sources				
Equalization formula funding	\$ 6,354	\$ 5,817	\$ 5,693	\$ 5,303
Grants	2,987	2,620	1,675	1,167
Donations and tax credits	5	10	140	78
Select revenues from less common sources				
Desegregation	\$ 0	\$ 0	1 of 29	
Small school adjustment	0	0	0 of 29	
Federal impact aid	5,920	6,893	15 of 29	
Voter-approved levy increases	0	3	19 of 29	

Tuba City USD—page 2

Classroom dollar percentage

Year:	2001	2002	2003	2004	2005	2006	2007	2008	2009	2010	2011	2012	2013	2014	2015
Percentage:	47.4	47.7	47.4	47.5	47.7	47.9	44.8	43.7	44.5	43.3	41.1	42.7	42.2	42.4	41.6

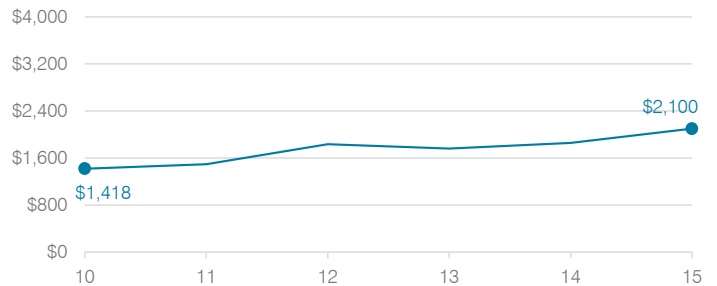
OPERATIONAL TRENDS

Fiscal years as indicated

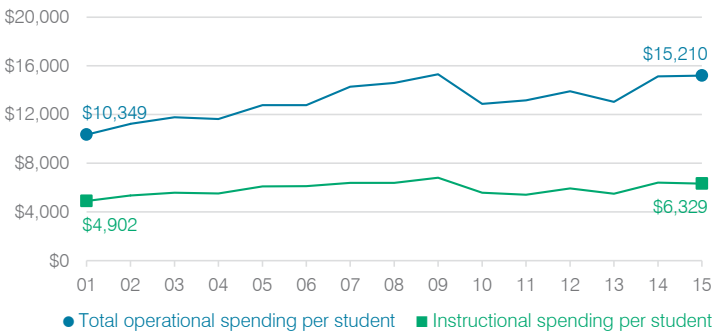
5-year spending trend (2010 through 2015)

Student enrollment decreased by 14 percent, which contributed to the 18 percent increase in total operational spending per pupil, adjusted for inflation. The percentage of dollars spent in the classroom varied year to year, decreasing overall from 43.3 to 41.6 percent. Overall, as a percentage of total operational spending, plant operations increased substantially and administration increased.

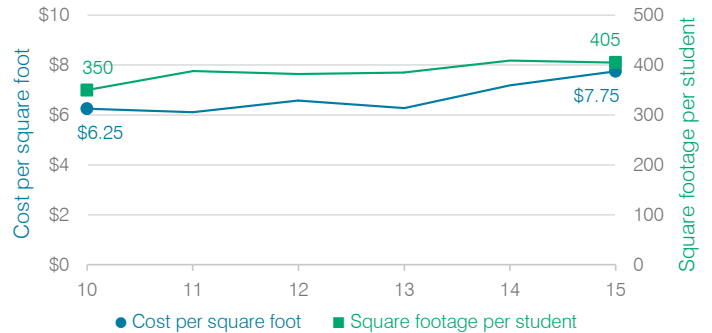
Administrative cost per student



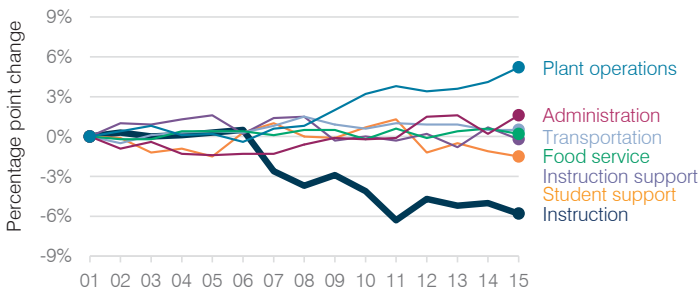
Total operational and instructional spending per student (inflation adjusted to 2015 dollars)



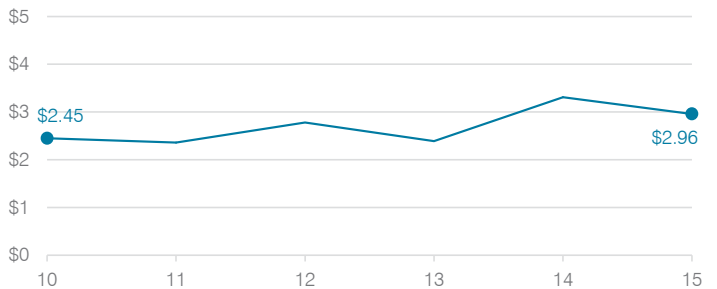
Plant cost per square foot and square footage per student



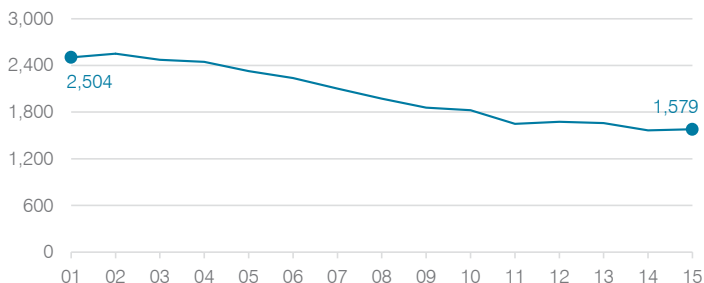
Changes in operational spending percentages



Food service cost per meal



Students attending



Transportation costs per mile and per rider

