

Tuba City Unified School District

Coconino County

Efficiency peer groups 5 and T-9, Achievement peer group 5

Legislative district(s): 7

District size, location:

Medium, Town

Students attending:

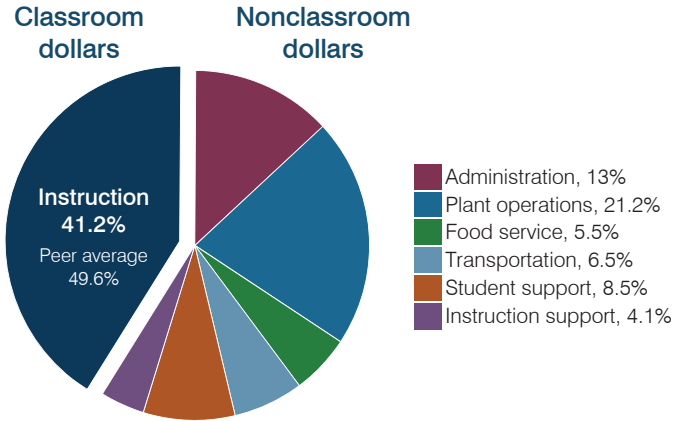
1,639

Number of schools:

6

OPERATIONAL EFFICIENCY

Spending by operational area



Efficiency measures relative to peer averages

Operational area	Measure	District	Peer average	State average
Administration	Cost per pupil	\$1,759	\$1,145	\$806
	Students per administrative position	34	56	67
Plant operations	Cost per square foot	\$8.21	\$5.22	\$6.10
	Square footage per student	349	270	154
Food service	Cost per meal	\$3.58	\$3.40	\$2.81
Transportation	Cost per mile	\$2.82	\$2.49	\$3.72
	Cost per rider	\$1,887	\$1,031	\$1,092

Very low Low Comparable High Very high

Per pupil spending

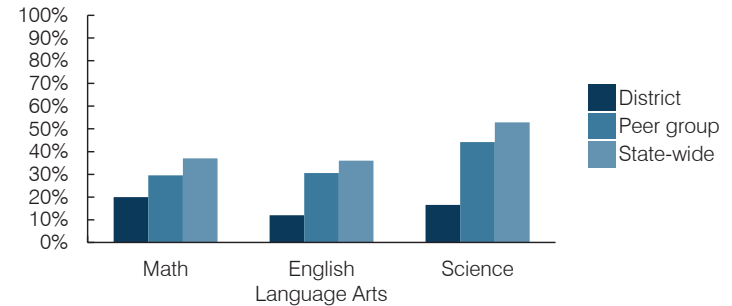
Spending by area	District		Peer average 2016	State average 2016
	2015	2016		
Instruction	\$ 6,329	\$ 5,572	\$ 4,576	\$ 4,145
Administration	2,100	1,759	1,145	806
Plant operations	3,141	2,870	1,342	939
Food service	660	741	450	415
Transportation	967	885	522	364
Student support	1,302	1,144	695	633
Instruction support	711	556	396	444
Total operational	\$ 15,210	\$ 13,527	\$ 9,126	\$ 7,746
Land and buildings	\$ 332	\$ 2,752	\$ 452	\$ 621
Equipment	704	605	498	400
Interest	11	30	243	216
Other	17	10	65	153
Total nonoperational	\$ 1,064	\$ 3,397	\$ 1,258	\$ 1,390
Total per pupil spending	\$ 16,274	\$ 16,924	\$ 10,384	\$ 9,136

STUDENT AND TEACHER MEASURES, FINANCIAL ASSESSMENT, AND REVENUES

Student and teacher measures

Measure	District	Peer average	State average
Attendance rate (2015)	92%	93%	94%
Graduation rate (2015)	74%	83%	78%
Poverty rate (2015)	27%	24%	23%
Students per teacher	12.6	16.5	18.6
Average teacher salary	\$39,258	\$44,919	\$46,384
Amount from Proposition 301	\$4,840	\$5,307	\$5,315
Average years of teacher experience	NR	12.0	11.0
Percentage of teachers in first 3 years	NR	17%	20%

Students who passed state assessments



Financial stress assessment

Overall financial stress level: **Low**

Measure: 2014 through 2016

Assessment

Change in number of district students	Increase
Spending exceeded operating/capital budgets	No overspending
Spending increase election results	Voter-approved
Operating reserve percentage, Trend	Impact Aid Fund reserve
Years of capital reserve held	More than 3 years
Current financial and internal control status	Marginally compliant

Low Moderate High

Per pupil revenues

Revenues by source	District		Peer average 2016	State average 2016
	2015	2016		
Federal	\$ 9,397	\$ 8,109	\$ 4,015	\$ 1,301
State	4,515	4,925	4,190	3,780
Local	2,076	2,688	4,081	4,268
Total revenues per pupil	\$ 15,988	\$ 15,722	\$ 12,286	\$ 9,349

Select revenues from common sources

Equalization formula funding	\$ 5,817	\$ 5,782	\$ 5,922	\$ 5,471
Grants	2,620	2,008	1,805	1,182
Donations and tax credits	10	5	139	86

Select revenues from less common sources

			Number of peers receiving
Desegregation	\$ 0	\$ 0	1 of 29
Small school adjustment	0	0	0 of 29
Federal impact aid	6,893	6,503	14 of 29
Voter-approved levy increases	3	320	19 of 29

Tuba City USD—page 2

Classroom dollar percentage

Year:	2001	2002	2003	2004	2005	2006	2007	2008	2009	2010	2011	2012	2013	2014	2015	2016
Percentage:	47.4	47.7	47.4	47.5	47.7	47.9	44.8	43.7	44.5	43.3	41.1	42.7	42.2	42.4	41.6	41.2

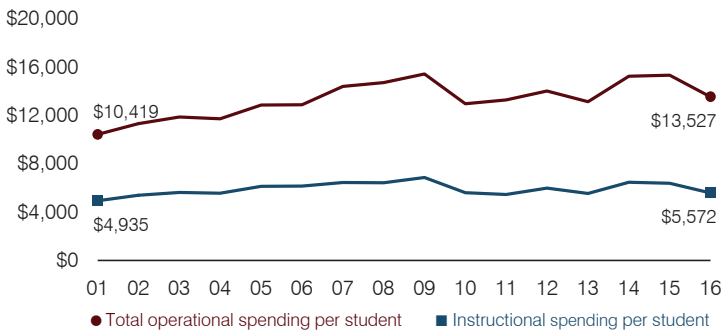
OPERATIONAL TRENDS

Fiscal years as indicated

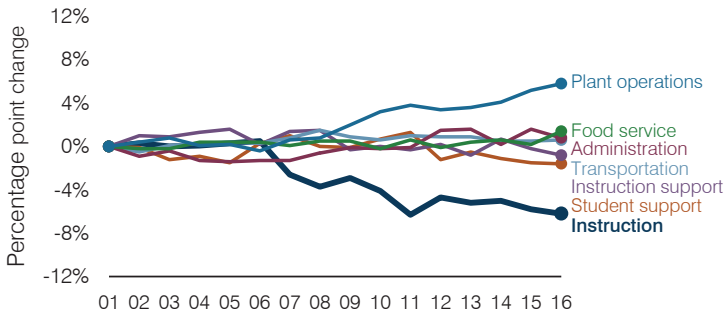
5-year spending trend (2011 through 2016)

Total operational spending per pupil, adjusted for inflation, increased by 2 percent. The percentage of dollars spent in the classroom varied year to year, ranging overall from a high of 42.7 to a low of 41.1 percent. Overall, as a percentage of total operational spending, student support decreased substantially and instruction support decreased slightly, while plant operations increased substantially.

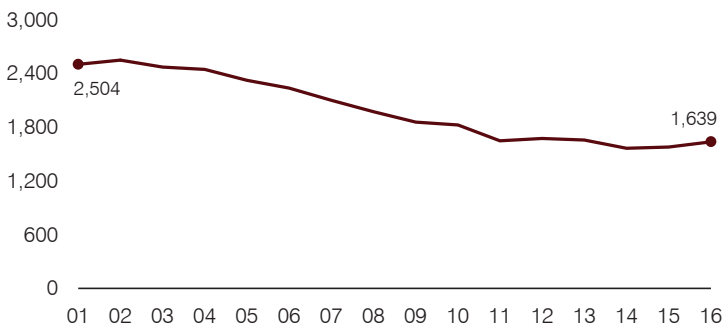
Total operational and instructional spending per pupil (inflation adjusted to 2016 dollars)



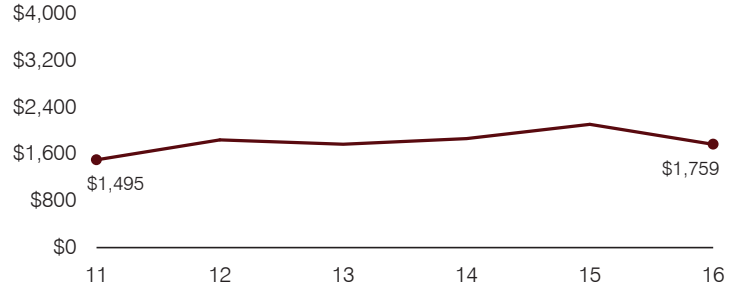
Changes in operational spending percentages



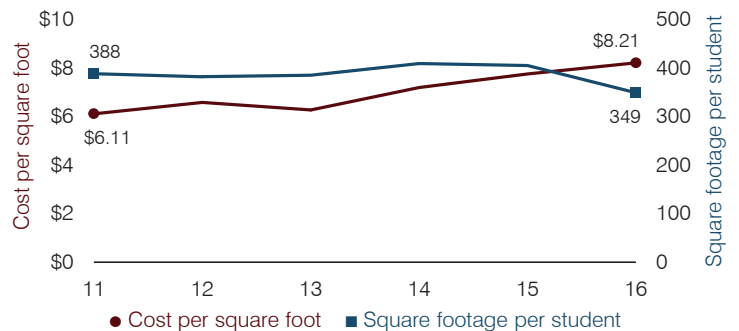
Students attending



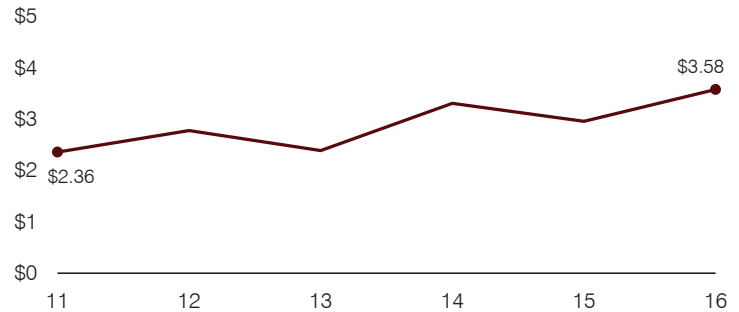
Administrative cost per pupil



Plant cost per square foot and square footage per student



Food service cost per meal



Transportation costs per mile and per rider

