

# Tuba City Unified School District

Coconino County  
Operational peer group: E  
Legislative districts: 2

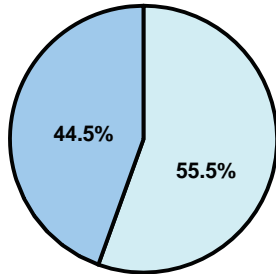
District size: Medium  
Students attending: 1,858  
Number of schools: 7

## OPERATIONAL EFFICIENCY

### Average per-pupil spending

District  
State

Classroom  
**\$6,178**  
\$4,497



Nonclassroom  
**\$7,709**  
\$3,411

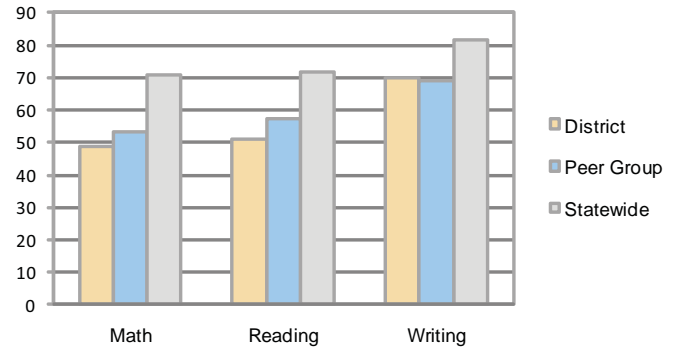
Total  
**\$13,887**  
\$7,908

### 5-year trend

Student enrollment decreased by 24 percent, which contributed to the 52 percent increase in total spending per pupil. Spending in the classroom varied year to year and decreased significantly overall from 47.5 to 44.5 percent. Spending on administration and plant operations increased, while spending in other nonclassroom areas varied year to year.

## STUDENT ACHIEVEMENT AND TEACHER INFORMATION

### Percentage of students meeting state standards (AIMS)



### Adequate Yearly Progress (AYP) toward federal goals

3 schools met all applicable AYP objectives for NCLB. 4 did not because they failed to meet 1 or more of the following objectives: academic progress (3); attendance rate (1); graduation rate (1).

### Student and teacher information

| Measure                              | District | Peer average | State average |
|--------------------------------------|----------|--------------|---------------|
| Attendance rate                      | 96%      | 93%          | 95%           |
| Graduation rate (2008)               | 63%      | 70%          | 75%           |
| Poverty rate                         | 33%      | 31%          | 19%           |
| Student/teacher ratio                | 13.3     | 14.9         | 17.1          |
| Average teacher salary               | \$40,666 | \$41,086     | \$45,209      |
| Average years' experience            | 12.2     | 11.1         | 8.3           |
| Percent of teachers in first 3 years | 7%       | 20%          | 16%           |

### District's cost measures relative to peer group

| Operational Area | Measure                    | District | Peer Average | State Average |
|------------------|----------------------------|----------|--------------|---------------|
| Administration   | Cost per pupil             | \$1,677  | \$1,148      | \$729         |
|                  | Students per administrator | 30       | 51           | 66            |
| Plant Operations | Cost per square foot       | \$7.02   | \$5.49       | \$6.40        |
|                  | Square footage per student | 344      | 253          | 144           |
| Food Service     | Cost per meal equivalent   | \$2.85   | \$3.07       | \$2.53        |
| Transportation   | Cost per mile              | \$2.75   | \$2.53       | \$3.36        |
|                  | Miles per rider            | 423      | 359          | 271           |

Very Low    Low    Comparable    High    Very High

### Per-pupil spending by function

|                              | District        |                 | Peer           | State          | National       |
|------------------------------|-----------------|-----------------|----------------|----------------|----------------|
|                              | 2008            | 2009            | 2009           | 2009           | 2007           |
| <b>Total</b>                 | <b>\$13,067</b> | <b>\$13,887</b> | <b>\$9,562</b> | <b>\$7,908</b> | <b>\$9,683</b> |
| <b>Classroom dollars</b>     | <b>\$5,710</b>  | <b>\$6,178</b>  | <b>\$4,925</b> | <b>\$4,497</b> | <b>\$5,903</b> |
| <b>Nonclassroom dollars:</b> | <b>\$7,357</b>  | <b>\$7,709</b>  | <b>\$4,637</b> | <b>\$3,411</b> | <b>\$3,780</b> |
| Administration               | 1,509           | 1,677           | 1,148          | 729            | 1,050          |
| Plant Operations             | 2,115           | 2,415           | 1,379          | 920            | 951            |
| Food Service                 | 598             | 634             | 444            | 382            | 369            |
| Transportation               | 976             | 949             | 554            | 343            | 406            |
| Student Support              | 1,318           | 1,391           | 749            | 594            | 512            |
| Instruction Support          | 841             | 643             | 356            | 431            | 470            |
| Other                        | 0               | 0               | 7              | 12             | 22             |

### Proposition 301

#### Teacher pay

On average, each teacher earned an additional \$4,427 in salary, and each librarian, audiologist, and counselor earned between \$3,845 and \$5,525, and each instructional aide earned an additional \$858.

#### Performance pay plan goals and results

| Type of goal                     | Goal met? |
|----------------------------------|-----------|
| Student achievement              | ▲         |
| Dropout/ graduation rates        |           |
| Student attendance               |           |
| Parent/student satisfaction      |           |
| Teacher attendance               |           |
| Teacher professional development | ▲         |
| Teacher evaluations              |           |
| Tutoring                         | ▲         |
| Other                            | ▲         |

■ = yes, □ = no, and ▲ = partially