

Classroom Dollars and Proposition 301 Results

Tucson Unified School District

Pima County

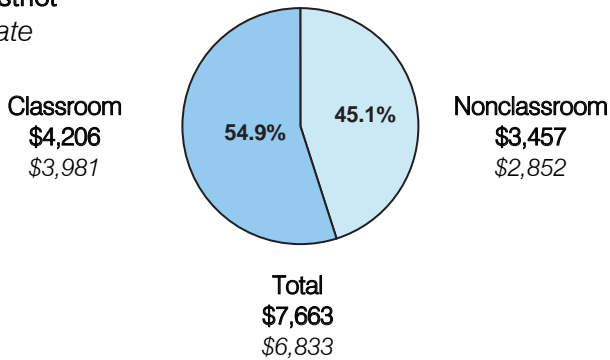
District size: Very Large
 Students attending: 58,114
 Number of schools: 122
 Number of certified teachers: 3,469

Classroom Dollars

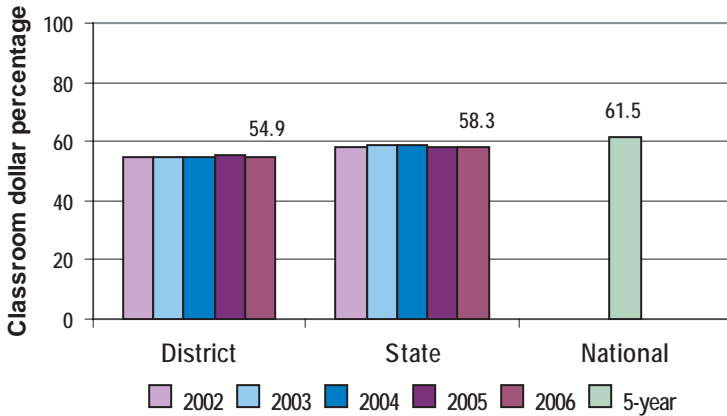
Fiscal year 2006 averages per pupil

District

State



5-year comparison



Expenditures by function

	District					State 2006	National 5-year
	2002	2003	2004	2005	2006		
Classroom dollars	54.7	54.9	55.0	55.4	54.9	58.3	61.5
Nonclassroom dollars:							
Administration	10.9	10.5	10.3	10.1	10.0	9.4	11.0
Plant operations	11.5	11.3	12.2	11.3	11.6	11.2	9.6
Food service	4.9	4.5	4.2	4.1	3.8	4.7	3.9
Transportation	4.0	4.3	4.5	4.6	4.9	4.2	4.0
Student support	8.9	9.0	8.7	8.9	8.6	7.2	5.1
Instruction support	5.1	5.5	5.1	5.6	6.2	4.8	4.7
Other						0.2	0.2

Comparative Information

	District			State
	2004	2005	2006	2006
Student/teacher ratio	17.3	18.7	16.8	17.7
Average teacher salary	\$40,928	\$40,500	\$47,259	\$42,967
Average years' experience	9.8	9.8	9.4	8.3

Classroom dollar ranking: 121 of 229 districts.

Proposition 301

District-reported 2006 results

Teacher pay

- On average, each teacher earned an additional \$5,077 in salary, and each librarian, speech pathologist, audiologist, and other staff, such as nurses, therapists, and coordinators, earned between \$4,896 and \$5,182 in additional salary.

Performance

- The District accomplished its goals, which were similar to the prior fiscal year's goals and were based on school performance.
- Student achievement goals were based on standardized test scores and district assessments.
- A team at each school planned and designed weekly professional development activities focused on improving student achievement.
- The Accountability and Research Department compiled middle and high school dropout and graduation rate data.
- Student attendance goals were met.

Menu

- Monies were used primarily to increase eligible employee compensation.
- Monies were also used to help reduce kindergarten class size from 26 students to 18 students per classroom.