

Tucson Unified School District

Pima County

Efficiency peer groups 1 and T-5, Achievement peer group 3¹

Legislative district(s): 2, 3, 4, 9, and 10

District size, location:

Very large, City

Students attending:

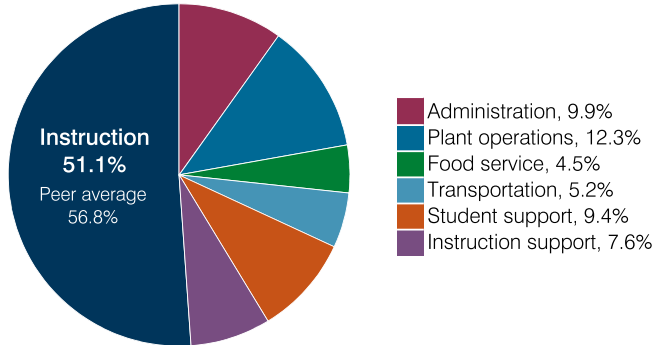
43,854

Number of schools:

86

OPERATIONAL EFFICIENCY

Spending by operational area



Efficiency measures relative to peer averages

Operational area	Measure	District	Peer average	State average
Administration	Cost per pupil	\$929	\$712	\$860
	Students per administrative position	51	80	66
Plant operations	Cost per square foot	\$6.21	\$6.18	\$6.34
	Square footage per student	186	149	156
Food service	Cost per meal	\$3.24	\$2.87	\$3.02
Transportation	Cost per mile	\$4.50	\$3.90	\$4.05
	Cost per rider	\$2,761	\$1,931	\$1,301

Very low Low Comparable High Very high

Per pupil spending

Spending by area	District		Peer average 2018	State average 2018
	2017	2018		
Instruction	\$ 4,647	\$ 4,808	\$ 4,531	\$ 4,480
Administration	1,006	929	712	860
Plant operations	1,122	1,157	916	988
Food service	408	417	331	425
Transportation	498	486	358	388
Student support	824	884	704	693
Instruction support	625	720	395	462
Total operational	9,130	9,401	7,947	8,296
Land and buildings	78	192	631	827
Equipment	364	349	317	409
Interest	200	219	232	228
Other	136	177	207	169
Total nonoperational	778	937	1,387	1,633
Total per pupil spending	\$ 9,908	\$ 10,338	\$ 9,334	\$ 9,929

¹ See Appendix A for information such as districts included in each peer group and Appendix B for sources and methodology.

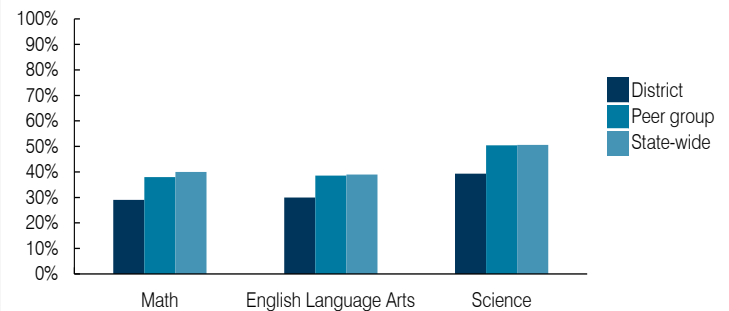
STUDENT ACHIEVEMENT, STUDENT AND TEACHER MEASURES, AND REVENUES

ADE-assigned school letter grades

Grade	Number of schools ²	Percentage of schools
A	8	10%
B	23	28%
C	29	36%
D	17	21%
F	4	5%

² Excludes schools for which letter grades were not published by ADE. See Appendix B for more information.

Students who passed State assessments



Student and teacher measures

Measure	District	Peer average	State average
Attendance rate	92%	93%	94%
Graduation rate (2017)	85%	85%	78%
Poverty rate (2017)	23%	19%	19%
Special education population	14%	14%	12%
Students per teacher	16.0	18.7	18.4
Average teacher salary	\$46,798	\$46,859	\$48,951
Amount from Prop 301	\$8,127	\$7,342	\$6,411
Average years of teacher experience	12.5	12.1	11.4
Percentage of teachers in first 3 years	13%	15%	19%

Per pupil revenues

Revenues by source	District		Peer average 2018	State average 2018
	2017	2018		
Federal	\$ 1,593	\$ 1,656	\$ 875	\$ 1,317
State	3,670	3,888	3,546	4,011
Local	4,692	4,736	5,443	4,592
Total per pupil revenues	\$ 9,955	\$ 10,280	\$ 9,864	\$ 9,920

Select revenues from common sources

Equalization formula funding	\$ 5,409	\$ 5,526	\$ 5,492	\$ 5,585
Grants	1,553	1,670	937	1,241
Donations and tax credits	84	85	94	90

Select revenues from less common sources

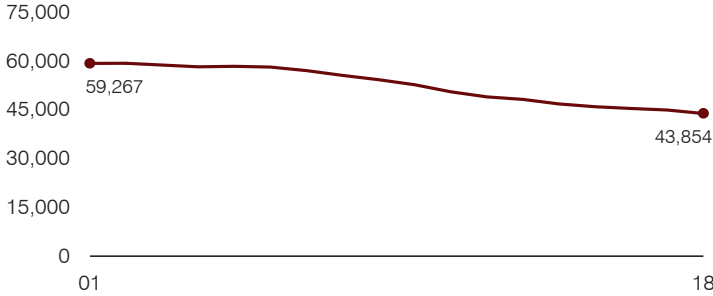
			Number of peers receiving
Desegregation	\$ 1,411	\$ 1,452	4 of 10
Small school adjustment	0	0	0 of 10
Federal impact aid	28	13	2 of 10
Voter-approved levy increases	509	396	10 of 10

Instructional spending percentage

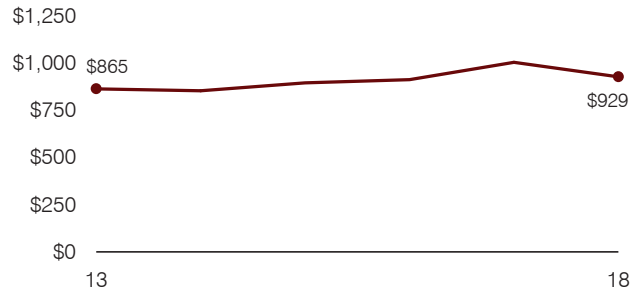
Year:	2001	2002	2003	2004	2005	2006	2007	2008	2009	2010	2011	2012	2013	2014	2015	2016	2017	2018
Percentage:	53.9	54.7	54.9	55.0	55.4	54.9	54.3	53.4	53.5	53.9	50.4	50.6	49.2	48.7	48.7	48.8	50.9	51.1

TRENDS AND FINANCIAL STRESS ASSESSMENT
Fiscal years as indicated

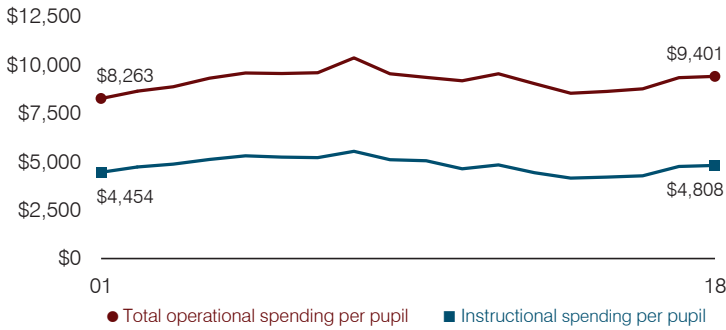
Students attending



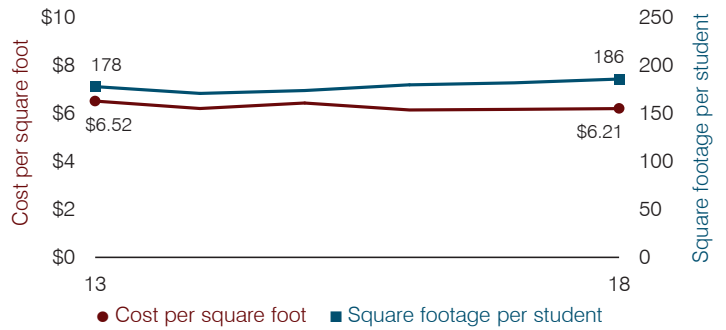
Administrative cost per pupil



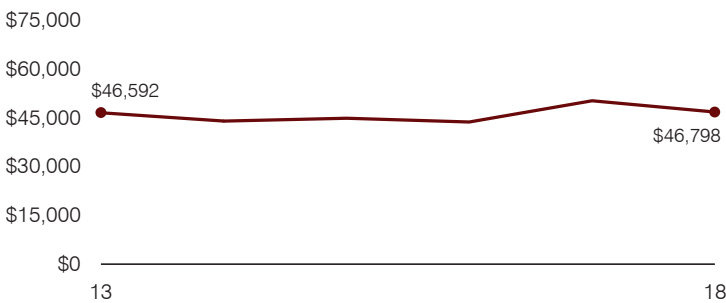
Total operational and instructional spending per pupil (inflation adjusted to 2018 dollars)



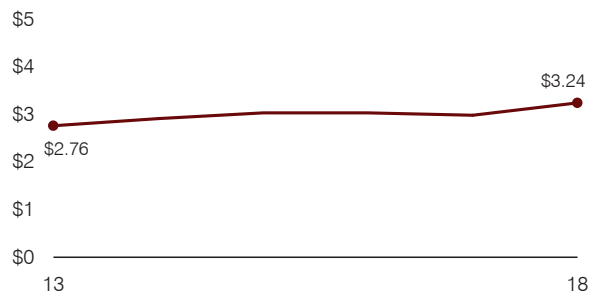
Plant cost per square foot and square footage per student



Average teacher salary



Food service cost per meal



Financial stress assessment

Overall financial stress level: **Moderate**

Measure: 2016 through 2018	Assessment
Change in number of district students	Moderate decrease
Spending exceeded operating/capital budgets	No overspending
Spending increase election results	Voter-rejected
Operating reserve percentage, Trend	1.6%, Decreasing
Years of capital reserve held	More than 3 years
Current financial and internal control status	Compliant

Low Moderate High

Transportation costs per mile and per rider

