

Classroom Dollars and Proposition 301 Results

Tucson Unified School District

Pima County

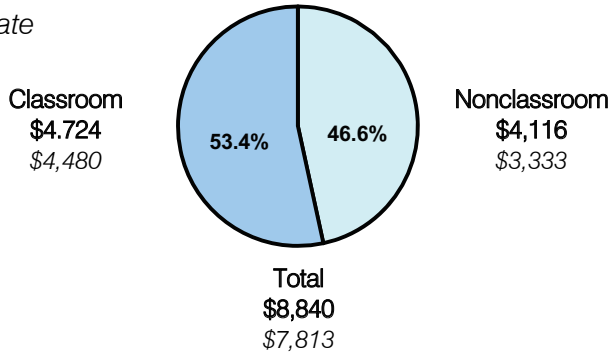
District size: Very Large
 Students attending: 55,574
 Number of schools: 118
 Number of certified teachers: 3,475

Classroom Dollars

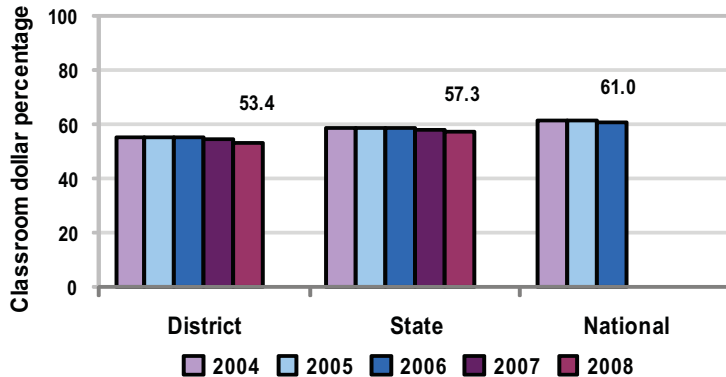
Fiscal year 2008 averages per pupil

District

State



5-year comparison



Expenditures by function

	District					State 2008	National 2006
	2004	2005	2006	2007	2008		
Classroom dollars	55.0	55.4	54.9	54.3	53.4	57.3	61.0
Nonclassroom dollars:							
Administration	10.3	10.1	10.0	10.0	9.2	9.2	10.8
Plant operations	12.2	11.3	11.6	11.9	11.0	11.3	9.9
Food service	4.2	4.1	3.8	3.8	3.6	4.8	3.8
Transportation	4.5	4.6	4.9	4.9	4.9	4.4	4.2
Student support	8.7	8.9	8.6	8.6	8.9	7.4	5.2
Instruction support	5.1	5.6	6.2	6.5	9.0	5.4	4.9
Other						0.2	0.2

Comparative Information

	District			State
	2006	2007	2008	2008
Student/teacher ratio	16.8	16.2	16.0	17.3
Average teacher salary	\$47,259	\$47,500	\$47,690	\$44,967
Average years' experience	9.4	9.3	8.9	8.1

Classroom dollar ranking: 144 of 230 districts.

Proposition 301

District-reported 2008 results

Teacher pay

- On average, each teacher, librarian, speech pathologist, counselor, social worker, nurse, therapist, coordinator, and instructional coach earned between \$4,628 and \$5,996 in additional salary.

Performance

- The District accomplished its goals, which were similar to the prior fiscal year's goals and were based on school performance.
- Student achievement goals were based on standardized test scores and district assessments.
- A team at each school planned and designed weekly professional development activities focused on improving student achievement.
- The Accountability and Research Department compiled middle and high school dropout and graduation rate data.
- 1 teacher at each school acted as a school council facilitator.

Menu

- Monies were used primarily to increase eligible employee compensation.
- Monies were also used to help reduce kindergarten class size from 24 students to 18 students per classroom and 1st-grade class size from 29 students to 18 students per classroom.