

# Classroom Dollars and Proposition 301 Results

## Tucson Unified School District

Pima County

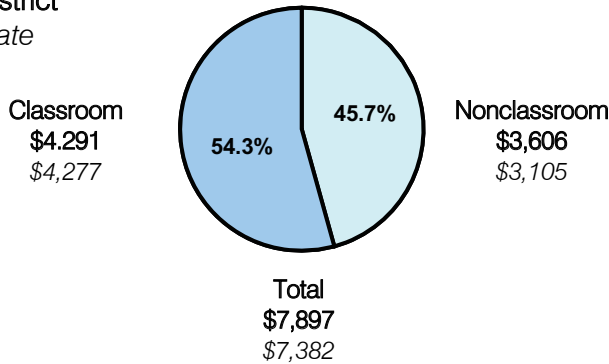
District size: Very Large  
 Students attending: 57,045  
 Number of schools: 122  
 Number of certified teachers: 3,515

### Classroom Dollars

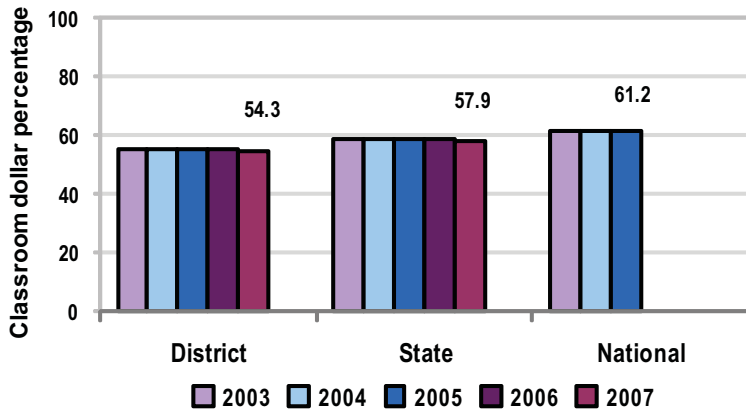
Fiscal year 2007 averages per pupil

District

State



5-year comparison



Expenditures by function

	District					State 2007	National 2005
	2003	2004	2005	2006	2007		
Classroom dollars	54.9	55.0	55.4	54.9	54.3	57.9	61.2
Nonclassroom dollars:							
Administration	10.5	10.3	10.1	10.0	10.0	9.5	11.0
Plant operations	11.3	12.2	11.3	11.6	11.9	11.3	9.6
Food service	4.5	4.2	4.1	3.8	3.8	4.7	3.9
Transportation	4.3	4.5	4.6	4.9	4.9	4.3	4.1
Student support	9.0	8.7	8.9	8.6	8.6	7.3	5.2
Instruction support	5.5	5.1	5.6	6.2	6.5	4.8	4.8
Other						0.2	0.2

### Comparative Information

	District			State 2007
	2005	2006	2007	
Student/teacher ratio	18.7	16.8	16.2	17.4
Average teacher salary	\$40,500	\$47,259	\$47,500	\$43,833
Average years' experience	9.8	9.4	9.3	8.1

Classroom dollar ranking: 127 of 229 districts.

### Proposition 301

#### District-reported 2007 results

##### Teacher pay

- On average, each teacher earned an additional \$4,984 in salary, and each librarian, speech pathologist, counselor, and other staff, such as nurses, therapists, and coordinators, earned between \$4,110 and \$4,945 in additional salary.

##### Performance

- The District accomplished its goals, which were similar to the prior fiscal year's goals and were based on school performance.
- Student achievement goals were based on standardized test scores and district assessments.
- A team at each school planned and designed weekly professional development activities focused on improving student achievement.
- The Accountability and Research Department compiled middle and high school dropout and graduation rate data.
- 1 teacher at each school acted as a school council facilitator.

##### Menu

- Monies were used primarily to increase eligible employee compensation.
- Monies were also used to help reduce kindergarten class size from 24 students to 18 students per classroom and 1st-grade class size from 29 students to 18 students per classroom.