

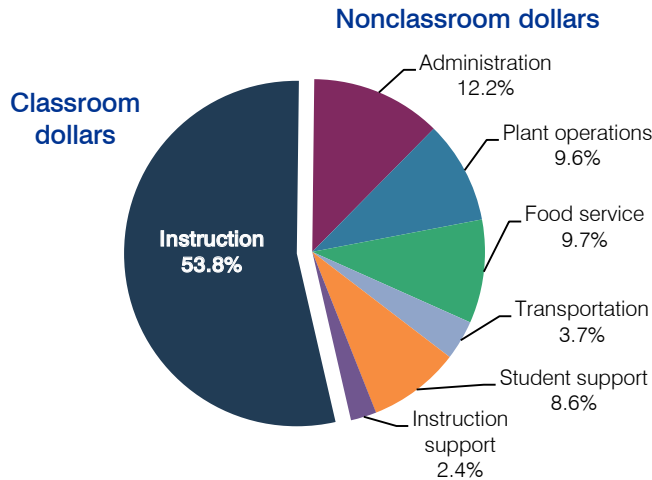
Union Elementary School District

Maricopa County
 Efficiency peer groups 8 and T-1, Achievement peer group 14
 Legislative district(s): 19

District size / location: Medium, Suburb
 Students attending: 1,612
 Number of schools: 2

OPERATIONAL EFFICIENCY

Spending by operational area



5-year spending trend

Total spending per pupil decreased by 7 percent. Spending in the classroom varied year to year, decreasing overall from 55.6 to 53.8 percent. Spending on administration, food service, and student support increased substantially, and spending on transportation decreased substantially. Spending on other nonclassroom areas varied year to year.

Cost measures relative to peer averages

Operational area	Measure	District	Peer average	State average
Administration	Cost per pupil	\$782	\$796	\$736
	Students per administrator	83	75	66
Plant operations	Cost per square foot	\$4.93	\$6.25	\$6.09
	Square footage per student	126	131	152
Food service	Cost per meal equivalent	\$2.32	\$2.45	\$2.47
Transportation	Cost per mile	\$6.64	\$5.69	\$3.50
	Cost per rider	\$603	\$569	\$982

Very low Low Comparable High Very high

Per-pupil spending by operational area

	District		Peer average	State average	National average
	2011	2012	2012	2012	2010
Total	\$6,063	\$6,427	\$6,968	\$7,475	\$10,652
Classroom dollars	3,058	3,457	3,582	4,053	6,526
Nonclassroom dollars:	3,005	2,970	3,386	3,422	4,126
Administration	819	782	796	736	1,139
Plant operations	629	620	811	928	1,012
Food service	596	625	523	382	405
Transportation	220	241	271	362	443
Student support	515	551	522	578	592
Instruction support	226	151	463	436	535

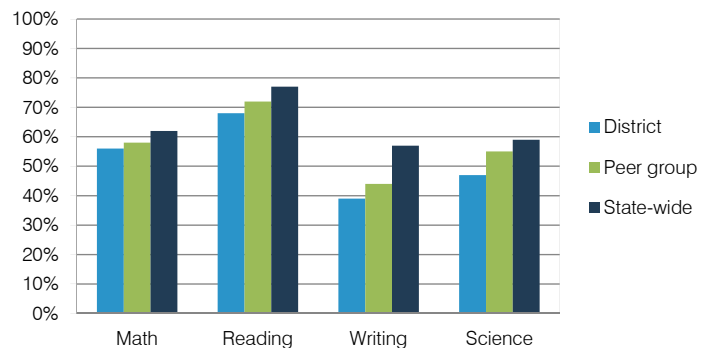
STUDENT ACHIEVEMENT, TEACHER MEASURES, AND FINANCIAL ASSESSMENT

ADE-reported district and school letter grades

District grade: **C**

Grade	Number of schools	Percentage of schools
A	0	0%
B	1	50%
C	1	50%
D	0	0%
F	0	0%
Not rated	0	0%

Percentage of students who met state standards (AIMS)



Student and teacher measures

Measure	District	Peer average	State average
Attendance rate	95%	95%	94%
Graduation rate (2011)	N/A	N/A	N/A
Poverty rate (2011)	22%	25%	25%
Students per teacher	20.9	19.8	18.1
Average teacher salary	\$38,899	\$40,307	\$45,193
Amount from Proposition 301	\$2,723	\$2,532	\$3,195
Average years of teacher experience	6.2	7.3	11.0
Percentage of teachers in first 3 years	31%	27%	16%

Financial stress assessment

Overall financial stress level: **Low**

Measure: 2010 through 2012	Assessment
Number of students attending	Steady
Spending exceeded operating/capital budgets	Capital only
Spending increase election results	Voter-approved
Operating reserve percentage (max. 4%), trend	3.8%, Decreasing
Years of capital reserve held	More than 3 years
Current financial and internal control status	Compliant

Stress level: **Low** Moderate High